

## DATASHEET

PART NUMBER

**W410000L**

**Carbide Tipped Countersink Cutter, 100° 1/2" Body**

WEBSITE

<https://www.wesconusa.com/products/W410000L>



\* The image represents the general look of the series. Actual product may vary based on options selected.

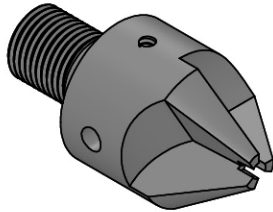
Wescon Carbide Tipped Aircraft Countersink Cutter Body, designed for use with removable pilots. Professional-grade aerospace tool offering versatility and precision. Features a standard threaded shank for compatibility with microstop cages.

### SPECIFICATIONS

<b>Angle</b>	100° Angle
<b>Flute</b>	2 Flutes
<b>Material</b>	Carbide Tipped
<b>Thread Size</b>	1/4-28
<b>Body Diameter</b>	1/2" (0.5")
<b>Pilot Hole Size</b>	3/32" (0.0938")
<b>Country of Origin</b>	USA

**ADDITIONAL IMAGES AND DRAWINGS**

**W410 Series Cutter**



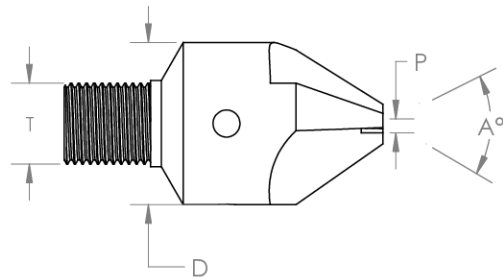
D-Diameter		
Standard	Minimum	Maximum
For Imperial	5/16"	1-1/4"
For Metric	8 mm	30 mm

P-Pilot Hole Size		
Standard	Minimum	Maximum
For Imperial	0.078"	0.196"
For Metric	2 mm	5 mm

No. Of Flutes
2
3
4

T-Thread
1/4-28
3/8-24
7/16-20
M6x1
M8x1

A-Angle
78°
82°
90°
100°
110°
120°



See wesconusa.com for full list of available sizes and part numbers.

		Part Number	<b>W410</b>
Do not modify, copy, distribute, or reproduce this drawing without prior written authorization.		© 2025 Wescon Industries Inc. 601 Century Plaza Dr. Houston, TX 77073, US www.wesconusa.com	
Revision 00	All dimensions are in inches	Information in this drawing is provided for reference only	
		Countersink Cutter with Removable Pilot	

Image 1