

DATASHEET

PART NUMBER

W4110012

Countersink Pilot 5.9 mm 1/8"

WEBSITE

<https://www.wesconusa.com/products/W4110012>



* The image represents the general look of the series. Actual product may vary based on options selected.

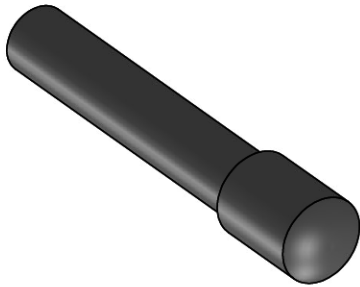
Wescon Precision Replacement Pilot for Countersink Cutters. Ensure accurate alignment and concentricity with this high-quality hardened steel pilot. Compatible with standard removable-pilot countersink bodies.

SPECIFICATIONS

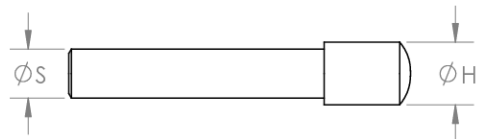
| | |
|--------------------------|---------------|
| Pilot Size | 5.9 mm |
| Pilot Hole Size | 1/8" (0.125") |
| Country of Origin | USA |

ADDITIONAL IMAGES AND DRAWINGS

W411 Series Pilot



| H-Pilot Head Nominal Diameter | | |
|--------------------------------------|---------|-----------|
| Standard | Minimum | Maximum |
| For Imperial | 3/32" | 11/16" |
| For Metric | 2.4 mm | 17.449 mm |



| S-Shank Diameter | | |
|-------------------------|---------|---------|
| Standard | Minimum | Maximum |
| For Imperial | 0.078" | 1/4" |
| For Metric | 2 mm | 5 mm |

See wesconusa.com for full list of available sizes and part numbers.

| | | | |
|---|------------------------------|--|-------------|
|  | | Part Number | W411 |
| | | Pilot For Carbide Tipped Stop Counterbores, Carbide Tipped Stop Countersinks, H.S. Stop C.B. & Stop C.S. | |
| Revision 00 | All dimensions are in Inches | Information in this drawing is provided for reference only | |

Image 1