

## DATASHEET

PART NUMBER

# W4150036

**HSS #10 Countersink Cutter, 100° 1/2" Body**

WEBSITE

<https://www.wesconusa.com/products/W4150036>



\* The image represents the general look of the series. Actual product may vary based on options selected.

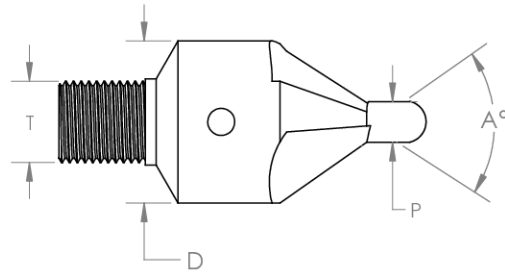
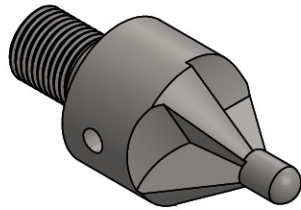
Wescon High Speed Steel Aircraft Countersink Cutter with 100 angle. Designed for precision aerospace applications, this cutter features an integrated pilot for accurate alignment, superior durability, and a clean finish on varied materials.

## SPECIFICATIONS

Angle	100° Angle
Flute	3 Flutes
Material	High Speed Steel
Pilot Size	#10 (0.1935")
Thread Size	1/4-28
Body Diameter	1/2" (0.5")
Country of Origin	USA

**ADDITIONAL IMAGES AND DRAWINGS**

**W415 Series Cutter**



D-Diameter		
Standard	Minimum	Maximum
For Imperial	5/16"	1-3/8"
For Metric	7.9375 mm	34.9250 mm

P-Pilot Hole Size		
Standard	Minimum	Maximum
For Imperial	#40	1/2"
For Metric	2.4892 mm	12.7000 mm

No. Of Flutes
2
3
4

T-Thread
1/4-28
3/8-24
7/16-20
M6x1
M8x1
M10x1

A-Angle
78°
82°
90°
100°
110°
120°

See [wesconusa.com](http://wesconusa.com) for full list of available sizes and part numbers.

		Part Number	<b>W415</b>
Do not modify, copy, distribute, or reproduce this drawing without prior written authorization.		© 2025 Wescon Industries Inc. 601 Century Plaza Dr. Houston, TX 77073, US www.wesconusa.com	
Revision 03	All dimensions are in inches	Information in this drawing is provided for reference only	
		Countersink Cutter with integrated Pilot	

Image 1



Image 2



Image 3