

## DATASHEET

PART NUMBER

# W415005L

**Carbide Tipped 6.33 mm Countersink Cutter, 100°  
17 mm Body**

WEBSITE

<https://www.wesconusa.com/products/W415005L>



\* The image represents the general look of the series. Actual product may vary based on options selected.

Wescon Carbide Tipped Aircraft Countersink Cutter with 100 angle. Designed for precision aerospace applications, this cutter features an integrated pilot for accurate alignment, superior durability, and a clean finish on varied materials.

## SPECIFICATIONS

Angle	100° Angle
Flute	2 Flutes
Material	Carbide Tipped
Pilot Size	6.33 mm
Thread Size	M8x1
Body Diameter	17 mm
Country of Origin	USA

ADDITIONAL IMAGES AND DRAWINGS



Image 1



Image 2



Image 3



Image 4

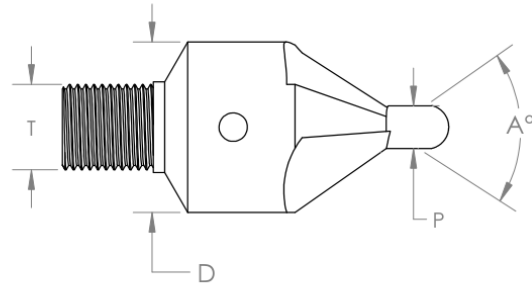
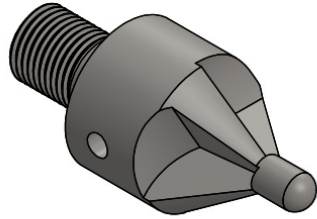


Image 5



Image 6

### W415 Series Cutter



D-Diameter		
Standard	Minimum	Maximum
For Imperial	5/16"	1-3/8"
For Metric	7.9375 mm	34.9250 mm

P-Pilot Hole Size		
Standard	Minimum	Maximum
For Imperial	#40	1/2"
For Metric	2.4892 mm	12.7000 mm

No. Of Flutes
2
3
4

#### T-Thread

1/4-28
3/8-24
7/16-20
M6x1
M8x1
M10x1

#### A-Angle

78°
82°
90°
100°
110°
120°

See wesconusa.com for full list of available sizes and part numbers.

		Part Number	<b>W415</b>
		Countersink Cutter with integrated Pilot	
Revision 03	All dimensions are in Inches	Information in this drawing is provided for reference only	

Image 7