

## DATASHEET

PART NUMBER

**WES1605-1270**

**Wescon 1605 1/4"-28 Threaded Drill Chuck  
Collet - Size 0.1270in**

120 degree seating angle. Use standard drill bits with  
1/4"-28 threaded angle drill motors

WEBSITE

<https://www.wesconusa.com/products/WES1605-1270>



\* The image represents the general look of the series. Actual product may vary based on options selected.

## SPECIFICATIONS

|                          |              |
|--------------------------|--------------|
| <b>Mount Type</b>        | Male Thread  |
| <b>Chuck Type</b>        | Collet Chuck |
| <b>Thread Size</b>       | 1/4-28       |
| <b>Size</b>              | 0.1270in     |
| <b>Country of Origin</b> | USA          |

**ADDITIONAL IMAGES AND DRAWINGS**

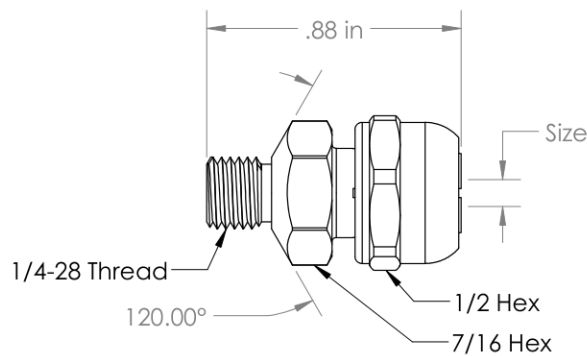
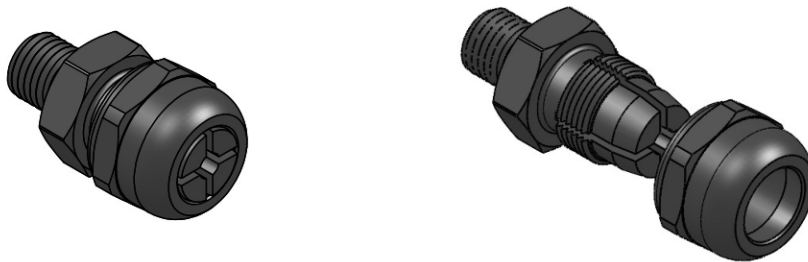


Image 0



Image 1

**WES1605 Series Drill Chuck Collet**



Minimum Size: 0.0700in  
Maximum Size: 0.2570in

Order as P/N WES1605-(SIZE)  
See [wesconusa.com](http://wesconusa.com) for full list of available sizes and part numbers.  
Custom size available upon request.

Used with 1/4-28 threaded angle drill motors

|   |   |  |                |
|---|---|--|----------------|
|  |   | Part Number  | <b>WES1605</b> |
|   |   | Threaded Drill Chuck Collet  |                |
| Revision 02   | Do not modify, copy, distribute, or reproduce this drawing without prior written authorization. | © 2025 Wescon Industries Inc.<br>601 Century Plaza Dr. Houston, TX 77073, US<br><a href="http://www.wesconusa.com">www.wesconusa.com</a> |                |
| All dimensions are in Inches  |   | Information in this drawing is provided for reference only   |                |

Image 2