

DATASHEET

PART NUMBER

WES1605-2500

Wescon 1605 1/4"-28 Threaded Drill Chuck Collet - Size 1/4 .2500 in

120 degree seating angle. Use standard drill bits with
1/4"-28 threaded angle drill motors

WEBSITE

<https://www.wesconusa.com/products/WES1605-2500>



* The image represents the general look of the series. Actual product may vary based on options selected.

SPECIFICATIONS

Mount Type	Male Thread
Chuck Type	Collet Chuck
Thread Size	1/4-28
Size	1/4 .2500 in
Country of Origin	USA

ADDITIONAL IMAGES AND DRAWINGS

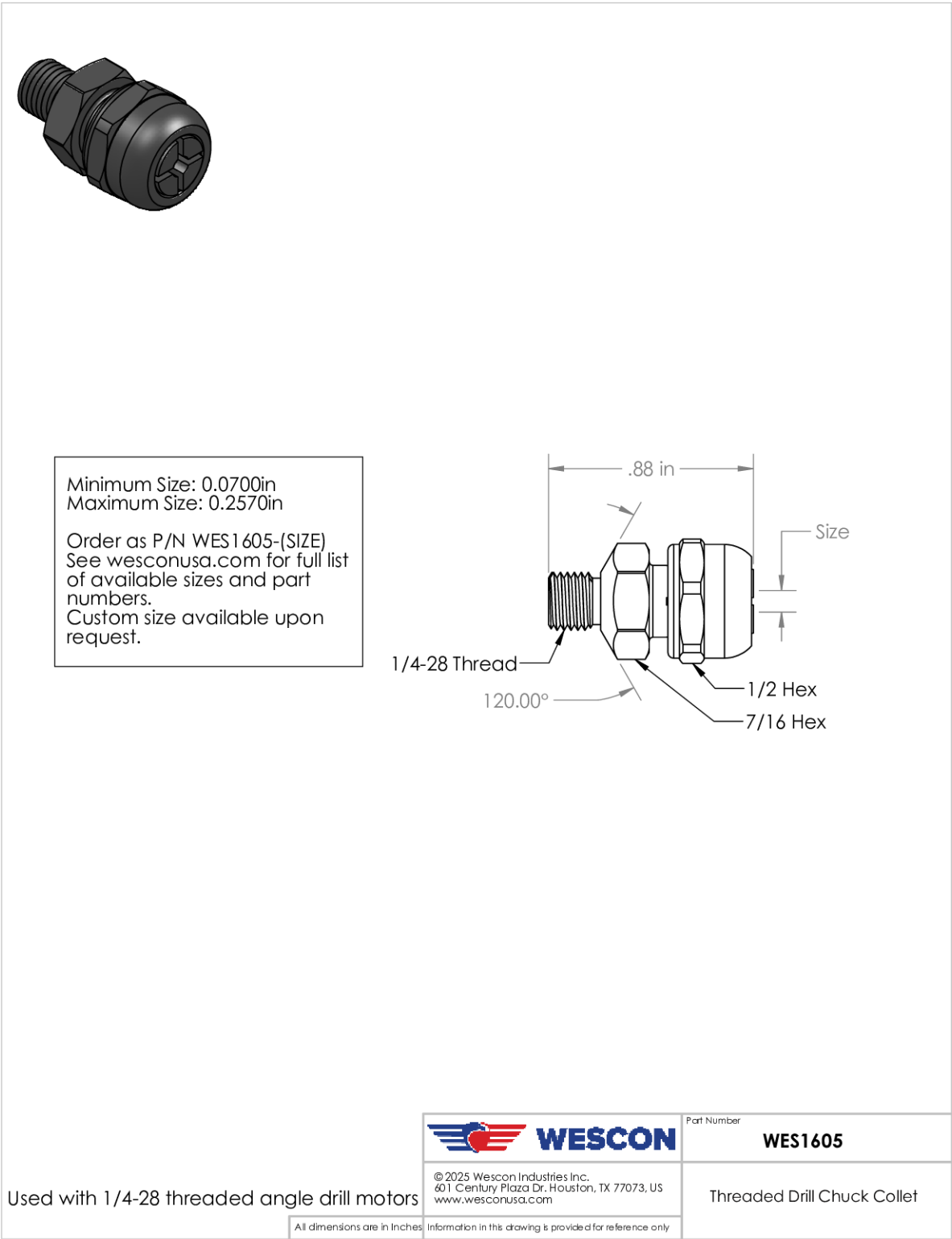


Image 1