

DATASHEET

PART NUMBER

WES1605-40

**Wescon 1605 1/4"-28 Threaded Drill Chuck
Collet - Size #40 (0.0980in)**

120 degree seating angle. Use standard drill bits with
1/4"-28 threaded angle drill motors

WEBSITE

<https://www.wesconusa.com/products/WES1605-40>



* The image represents the general look of the series. Actual product may vary based on options selected.

SPECIFICATIONS

Mount Type	Male Thread
Chuck Type	Collet Chuck
Thread Size	1/4-28
Size	#40 (0.0980in)
Country of Origin	USA

ADDITIONAL IMAGES AND DRAWINGS

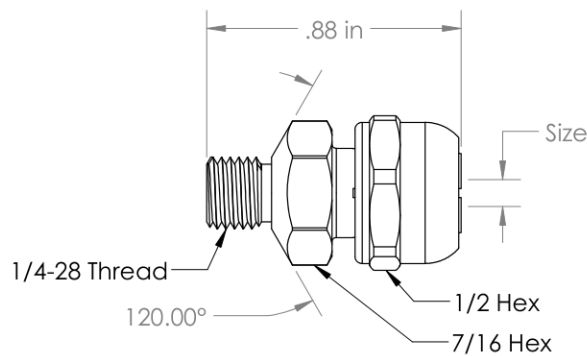
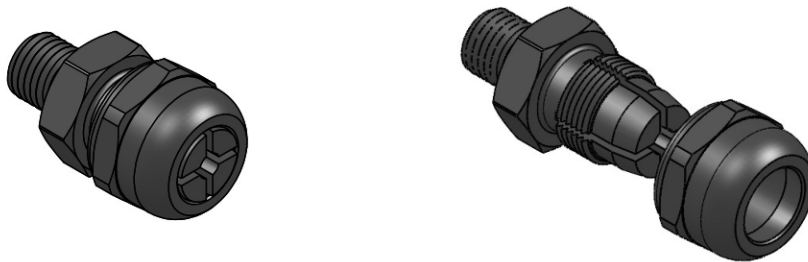


Image 0



Image 1

WES1605 Series Drill Chuck Collet



Minimum Size: 0.0700in
Maximum Size: 0.2570in

Order as P/N WES1605-(SIZE)
See wesconusa.com for full list of available sizes and part numbers.
Custom size available upon request.

Used with 1/4-28 threaded angle drill motors

		Part Number	WES1605
Do not modify, copy, distribute, or reproduce this drawing without prior written authorization.		© 2025 Wescon Industries Inc. 601 Century Plaza Dr. Houston, TX 77073, US www.wesconusa.com	
Revision 02	All dimensions are in Inches	Threaded Drill Chuck Collet	
		Information in this drawing is provided for reference only	

Image 2