

## DATASHEET

PART NUMBER

**WES1615-50**

**Wescon 1615 Quick Change Collet Chuck - Size #50 (0.0700in)**

Short series for use in right angle drill motors with our model 1760 chuck

WEBSITE

<https://www.wesconusa.com/products/WES1615-50>



\* The image represents the general look of the series. Actual product may vary based on options selected.

## SPECIFICATIONS

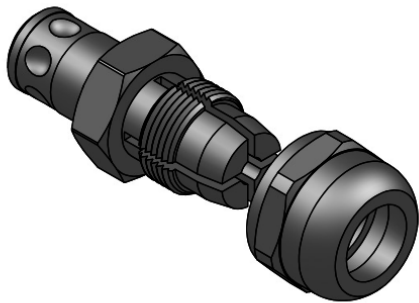
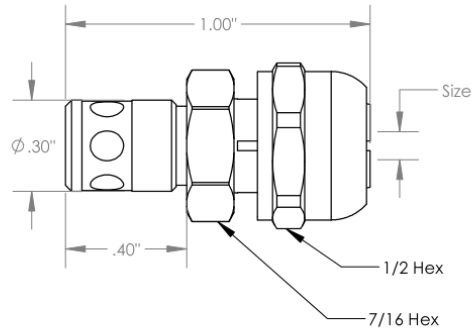
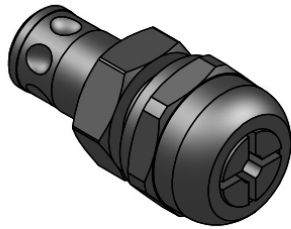
Mount Type	Quick Change
Chuck Type	Collet Chuck
Size	#50 (0.0700in)
Country of Origin	USA

**ADDITIONAL IMAGES AND DRAWINGS**



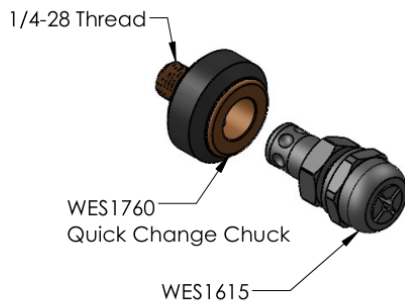
Image 1

## WES1615 Series Quick Change Collet Chuck



Minimum Size: 0.0700in  
Maximum Size: 0.2570in

Order as P/N WES1615-(SIZE)  
See [wesconusa.com](http://wesconusa.com) for full list of available sizes and part numbers.  
Custom size available upon request.



**Notes from our Engineering Team**

- Adapts straight shank tools to be used in quick-change system.
- Use with the WES1760 to connect quick-change tooling to 1/4-28 threaded drill motors.

Do not modify, copy, distribute, or reproduce this drawing without prior written authorization.  Revision 03    All dimensions are in Inches    Information in this drawing is provided for reference only		Part Number <b>WES1615</b>
	© 2025 Wescon Industries Inc. 601 Century Plaza Dr. Houston, TX 77073, US <a href="http://www.wesconusa.com">www.wesconusa.com</a>	
		<b>Quick Change Collet Chuck</b>

Image 2