

DATASHEET

PART NUMBER

WES1625-10

Wescon 1625 Quick Change Collet Chuck - Size #10 (0.1935in)

Standard series quick change used with our model 1750 chuck

WEBSITE

<https://www.wesconusa.com/products/WES1625-10>



* The image represents the general look of the series. Actual product may vary based on options selected.

SPECIFICATIONS

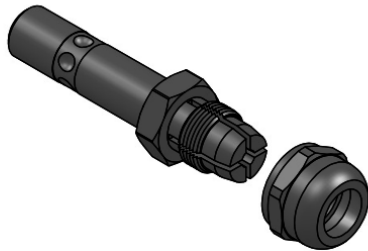
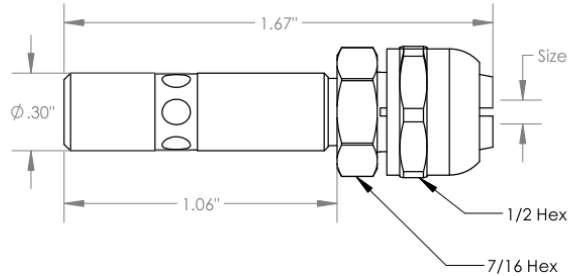
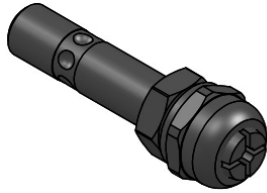
| | |
|-------------------|----------------|
| Mount Type | Quick Change |
| Chuck Type | Collet Chuck |
| Size | #10 (0.1935in) |
| Country of Origin | USA |

ADDITIONAL IMAGES AND DRAWINGS



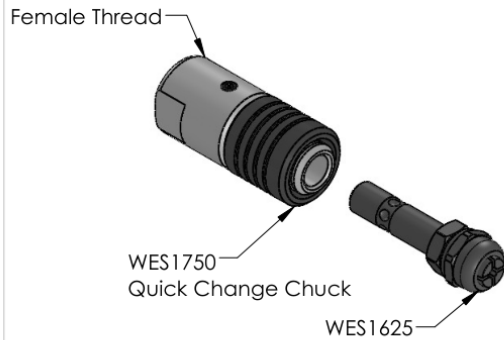
Image 1

WES1625 Series Quick Change Collet Chuck



Minimum Size: 0.0700in
Maximum Size: 0.2570in

Order as P/N WES1625-(SIZE)
See wesconusa.com for full list of available sizes and part numbers.
Custom size available upon request.



Notes from our Engineering Team

- Adapts straight shank tools to be used in quick-change system.
- Use with the WES1750 to connect quick-change tooling to 3/8-24 or 1/2-20 threaded drill motors.



Part Number

WES1625

Do not modify, copy, distribute, or reproduce this drawing without prior written authorization.

© 2025 Wescon Industries Inc.
601 Century Plaza Dr. Houston, TX 77073, US
www.wesconusa.com

Quick Change Collet Chuck

Revision 03 All dimensions are in Inches Information in this drawing is provided for reference only

Image 2