

## DATASHEET

PART NUMBER

**WES1625-50**

**Wescon 1625 Quick Change Collet Chuck - Size #50 (0.0700in)**

Standard series quick change used with our model 1750 chuck

WEBSITE

<https://www.wesconusa.com/products/WES1625-50>



\* The image represents the general look of the series. Actual product may vary based on options selected.

## SPECIFICATIONS

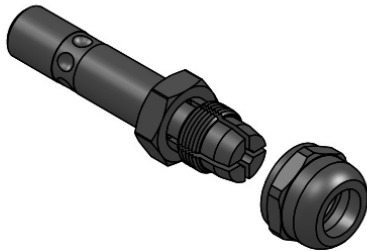
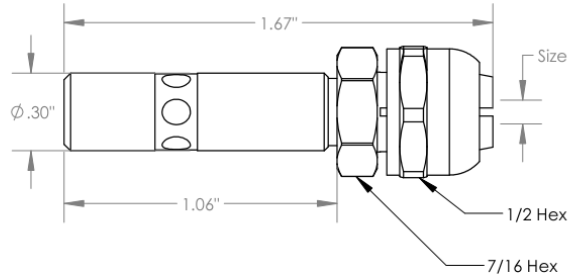
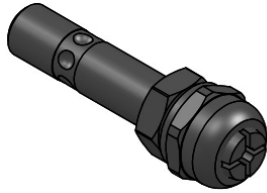
Mount Type	Quick Change
Chuck Type	Collet Chuck
Size	#50 (0.0700in)
Country of Origin	USA

**ADDITIONAL IMAGES AND DRAWINGS**



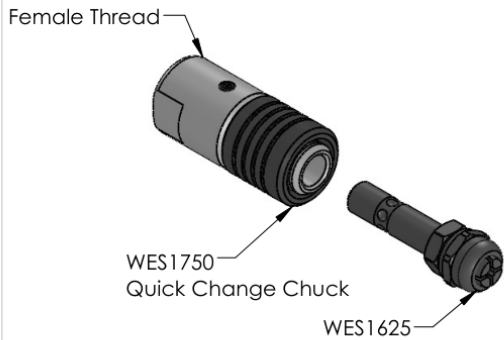
Image 1

## WES1625 Series Quick Change Collet Chuck



Minimum Size: 0.0700in  
Maximum Size: 0.2570in

Order as P/N WES1625-(SIZE)  
See [wesconusa.com](http://wesconusa.com) for full list of available sizes and part numbers.  
Custom size available upon request.



### Notes from our Engineering Team

- Adapts straight shank tools to be used in quick-change system.
- Use with the WES1750 to connect quick-change tooling to 3/8-24 or 1/2-20 threaded drill motors.



Part Number

**WES1625**

Do not modify, copy, distribute, or reproduce this drawing without prior written authorization.

© 2025 Wescon Industries Inc.  
601 Century Plaza Dr. Houston, TX 77073, US  
[www.wesconusa.com](http://www.wesconusa.com)

Quick Change Collet Chuck

Revision 03

All dimensions are in Inches

Information in this drawing is provided for reference only

Image 2