

DATASHEET

PART NUMBER

WES296-6-IN-QC

**Wescon 296 Microstop - M6x1 - 1/2" Cutter
Capacity - Internal Thread Skirt - Nylon Foot**

CLOSE QUARTERS USE

WEBSITE

<https://www.wesconusa.com/products/WES296-6-IN-QC>

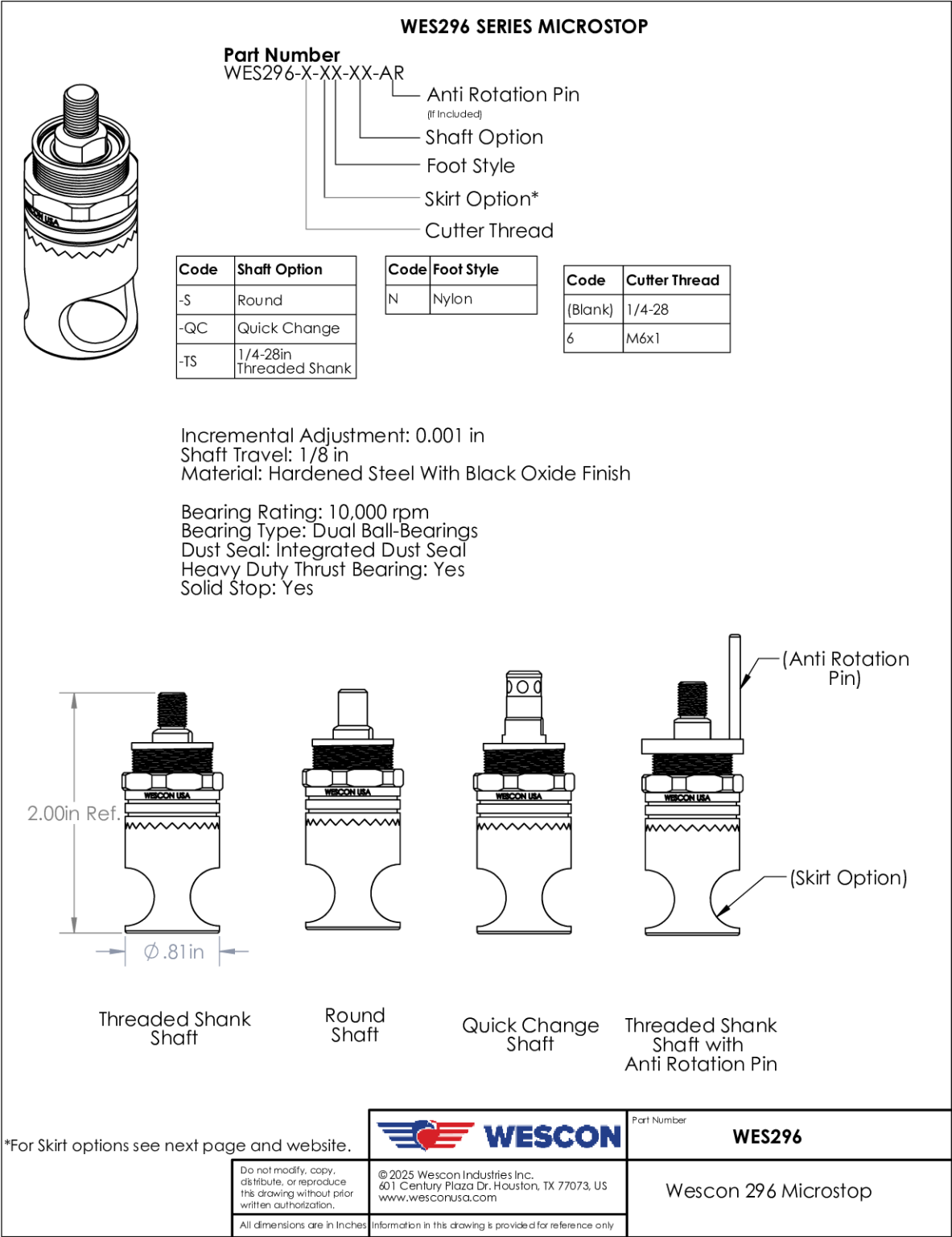


* The image represents the general look of the series. Actual product may vary based on options selected.

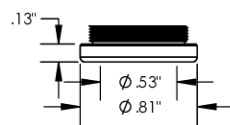
SPECIFICATIONS

Measurement Type	Metric
Bearing Rating	10,000 rpm
Bearing Type	Dual Ball Bearings
Heavy Duty Thrust Bearing	No
Incremental Adjustment	0.001 in
Shaft Travel	1/8 in
Cutter Thread	M6x1
Shaft	Quick Change
Shaft Diameter	1/4 in
Cutter Capacity	1/2 in
Skirt	Internal Thread
Skirt Description	1/2 in Cutter Capacity
Foot	Nylon
Solid Stop	Yes
Material	Steel
Country of Origin	USA

ADDITIONAL IMAGES AND DRAWINGS



Foot Style For Internal Thread

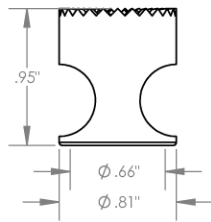


Part Number	Material
29620-N	Nylon
29620-S	Steel
29620-P	Phenolic

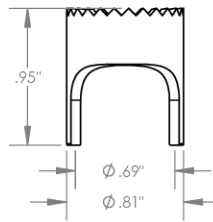
		Part Number WES296
Do not modify, copy, distribute, or reproduce this drawing without prior written authorization.	© 2025 Wescon Industries Inc. 601 Century Plaza Dr. Houston, TX 77073, US www.wesconusa.com	Wescon 296 Microstop
All dimensions are in inches	Information in this drawing is provided for reference only	

Image 2

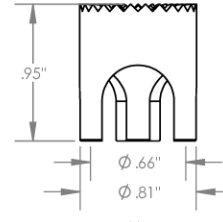
Skirt Option



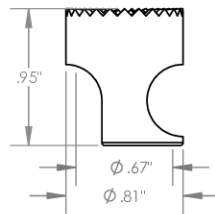
S
Straight
Cutter $\phi 5/8"$



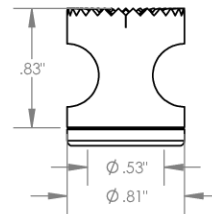
S2L
2-Leg
Cutter $\phi 5/8"$



S3L
3-Leg
Cutter $\phi 5/8"$



SCA
Straight Cutaway
Cutter $\phi 5/8"$



I
Internal Thread
Cutter $\phi 1/2"$
Choose Foot Style From Table


		Part Number	WES296
Do not modify, copy, distribute, or reproduce this drawing without prior written authorization.	© 2025 Wescon Industries Inc. 601 Century Plaza Dr. Houston, TX 77073, US www.wesconusa.com	Wescon 296 Microstop	
All dimensions are in inches	Information in this drawing is provided for reference only		

Image 3