

## DATASHEET

### PART NUMBER

**WES296-6-S-QC**

**Wescon 296 Microstop - M6x1 - 5/8" Cutter  
Capacity - Straight Skirt**

CLOSE QUARTERS USE

### WEBSITE

<https://www.wesconusa.com/products/WES296-6-S-QC>

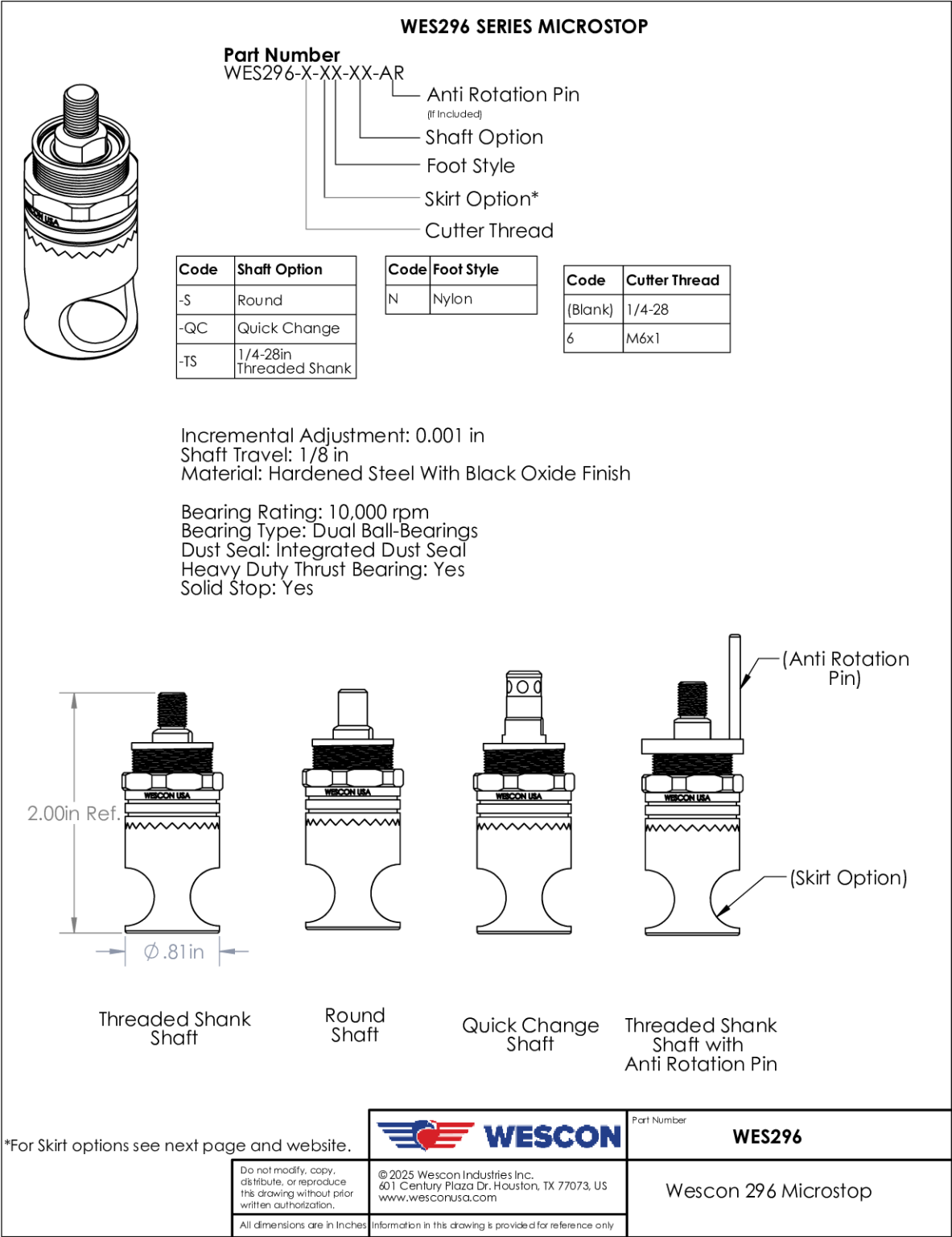


\* The image represents the general look of the series. Actual product may vary based on options selected.

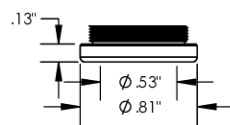
## SPECIFICATIONS

Measurement Type	Metric
Bearing Rating	10,000 rpm
Bearing Type	Dual Ball Bearings
Heavy Duty Thrust Bearing	No
Incremental Adjustment	0.001 in
Shaft Travel	1/8 in
Cutter Thread	M6x1
Shaft	Quick Change
Shaft Diameter	1/4 in
Cutter Capacity	5/8 in
Skirt	Straight
Solid Stop	Yes
Material	Steel
Country of Origin	USA

ADDITIONAL IMAGES AND DRAWINGS



### Foot Style For Internal Thread

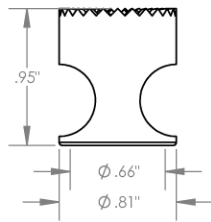


Part Number	Material
29620-N	Nylon
29620-S	Steel
29620-P	Phenolic

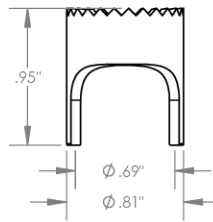
		Part Number	<b>WES296</b>
Do not modify, copy, distribute, or reproduce this drawing without prior written authorization.	© 2025 Wescon Industries Inc. 601 Century Plaza Dr. Houston, TX 77073, US www.wesconusa.com	Wescon 296 Microstop	
All dimensions are in inches	Information in this drawing is provided for reference only		

Image 2

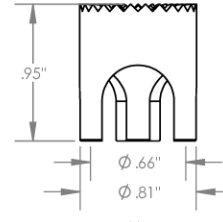
### Skirt Option



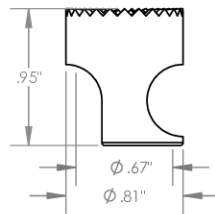
**S**  
Straight  
Cutter  $\phi 5/8"$



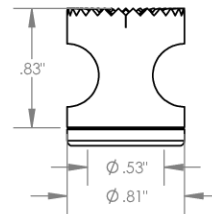
**S2L**  
2-Leg  
Cutter  $\phi 5/8"$



**S3L**  
3-Leg  
Cutter  $\phi 5/8"$



**SCA**  
Straight Cutaway  
Cutter  $\phi 5/8"$



**I**  
Internal Thread  
Cutter  $\phi 1/2"$   
Choose Foot Style From Table


		Part Number	<b>WES296</b>
Do not modify, copy, distribute, or reproduce this drawing without prior written authorization.	© 2025 Wescon Industries Inc. 601 Century Plaza Dr. Houston, TX 77073, US www.wesconusa.com	Wescon 296 Microstop	
All dimensions are in inches	Information in this drawing is provided for reference only		

Image 3