

## DATASHEET

PART NUMBER

### WES296-6-S2L-TS

**Wescon 296 Microstop - M6x1 - 15 mm Cutter  
Capacity - 2-Leg**

CLOSE QUARTERS USE

WEBSITE

<https://www.wesconusa.com/products/WES296-6-S2L-TS>



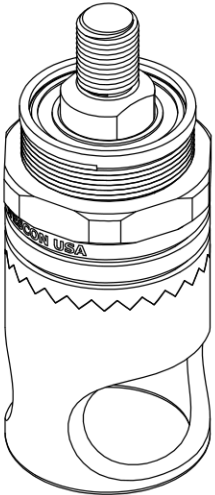
\* The image represents the general look of the series. Actual product may vary based on options selected.

## SPECIFICATIONS

Measurement Type	Metric
Bearing Rating	10,000 rpm
Bearing Type	Dual Ball Bearings
Heavy Duty Thrust Bearing	No
Incremental Adjustment	0.025 mm
Shaft Travel	3.175 mm
Cutter Thread	M6x1
Shaft	Threaded
Shaft Diameter	6.35 mm
Cutter Capacity	15 mm
Skirt	2-Leg
Solid Stop	Yes
Material	Steel
Country of Origin	USA

## ADDITIONAL IMAGES AND DRAWINGS

### WES296 Series Microstop



**Part Number**  
WES296-X-XX-XX-AR

- Anti Rotation Pin (If Included)
- Shaft Option
- Foot Style
- Skirt Option\*
- Cutter Thread

Code	Cutter Thread
(Blank)	1/4-28
6	M6x1

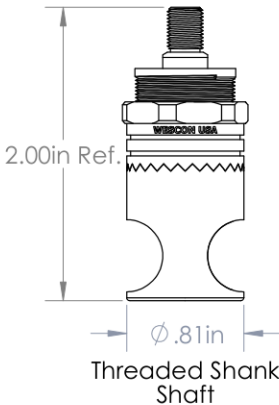
Code	Foot Style
N	Nylon

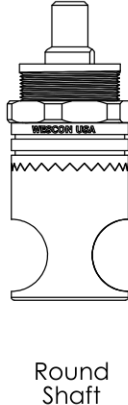
Code	Shaft Option
S	Round
QC	Quick Change
TS	1/4-28in Threaded Shank

Incremental Adjustment: 0.001 in  
 Shaft Travel: 1/8 in  
 Material: Carbon Steel Body With Hardened Tool Steel Shaft

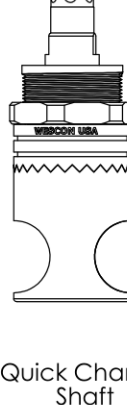
Bearing Rating: 10,000 rpm  
 Bearing Type: Dual Ball-Bearings  
 Dust Seal: Integrated Dust Seal  
 Heavy Duty Thrust Bearing: No  
 Solid Stop: Yes



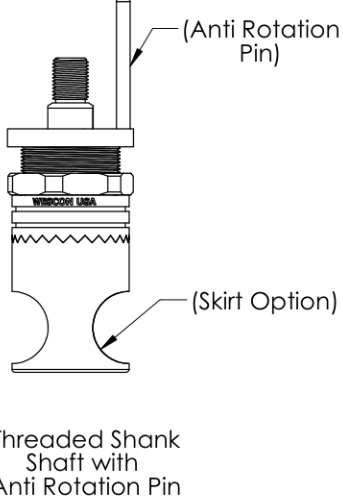
Threaded Shank Shaft



Round Shaft




Quick Change Shaft



Threaded Shank Shaft with Anti Rotation Pin

\*For Skirt options see next page and website.



**WESCON**

Part Number  
**WES296**

Revision 03

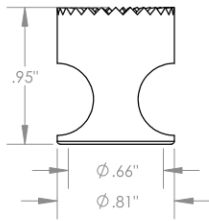
Do not modify, copy, distribute, or reproduce this drawing without prior written authorization.

© 2025 Wescon Industries Inc.  
 601 Century Plaza Dr. Houston, TX 77073. US  
 www.wesconusa.com

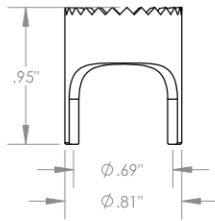
Information in this drawing is provided for reference only

Image 1

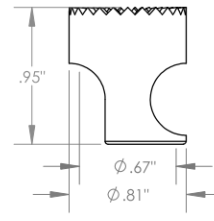
### Skirt Option



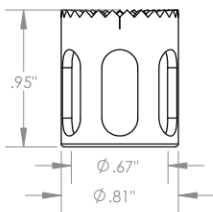
**S**  
Straight  
Cutter  $\phi 5/8"$  ( $\phi 16\text{mm}$ )



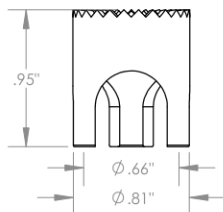
**S2L**  
2-Leg  
Cutter  $\phi 5/8"$  ( $\phi 16\text{mm}$ )



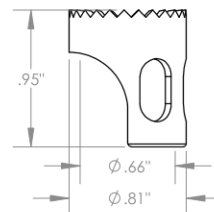
**SCA**  
Straight Cutaway  
Cutter  $\phi 5/8"$  ( $\phi 16\text{mm}$ )



**SL**  
Slotted  
Cutter  $\phi 5/8"$  ( $\phi 16\text{mm}$ )

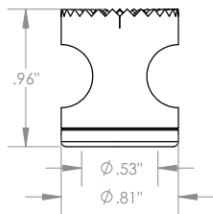


**S3L**  
3-Leg  
Cutter  $\phi 5/8"$  ( $\phi 16\text{mm}$ )

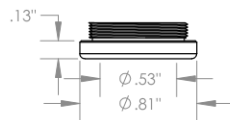


**SSCA**  
Slotted Straight Cutaway  
Cutter  $\phi 5/8"$  ( $\phi 16\text{mm}$ )

### Foot Style For Internal Thread



**I**  
Internal Thread  
Cutter  $\phi 1/2"$  ( $\phi 12\text{mm}$ )  
Choose Foot Style From Table



Part Number	Material
29620-N	Nylon
29620-S	Steel
29620-P	Phenolic



Part Number

**WES296**

Do not modify, copy, distribute, or reproduce this drawing without prior written authorization.

© 2025 Wescon Industries Inc.  
601 Century Plaza Dr. Houston, TX 77073, US  
www.wesconusa.com

Wescon 296 Microstop

Revision 03

All dimensions are in Inches

Information in this drawing is provided for reference only

Image 2