

## DATASHEET

### PART NUMBER

**WES296-6-S3L**

**Wescon 296 Microstop - M6x1 - 5/8" Cutter  
Capacity - 3-Leg Skirt**

CLOSE QUARTERS USE

### WEBSITE

<https://www.wesconusa.com/products/WES296-6-S3L>

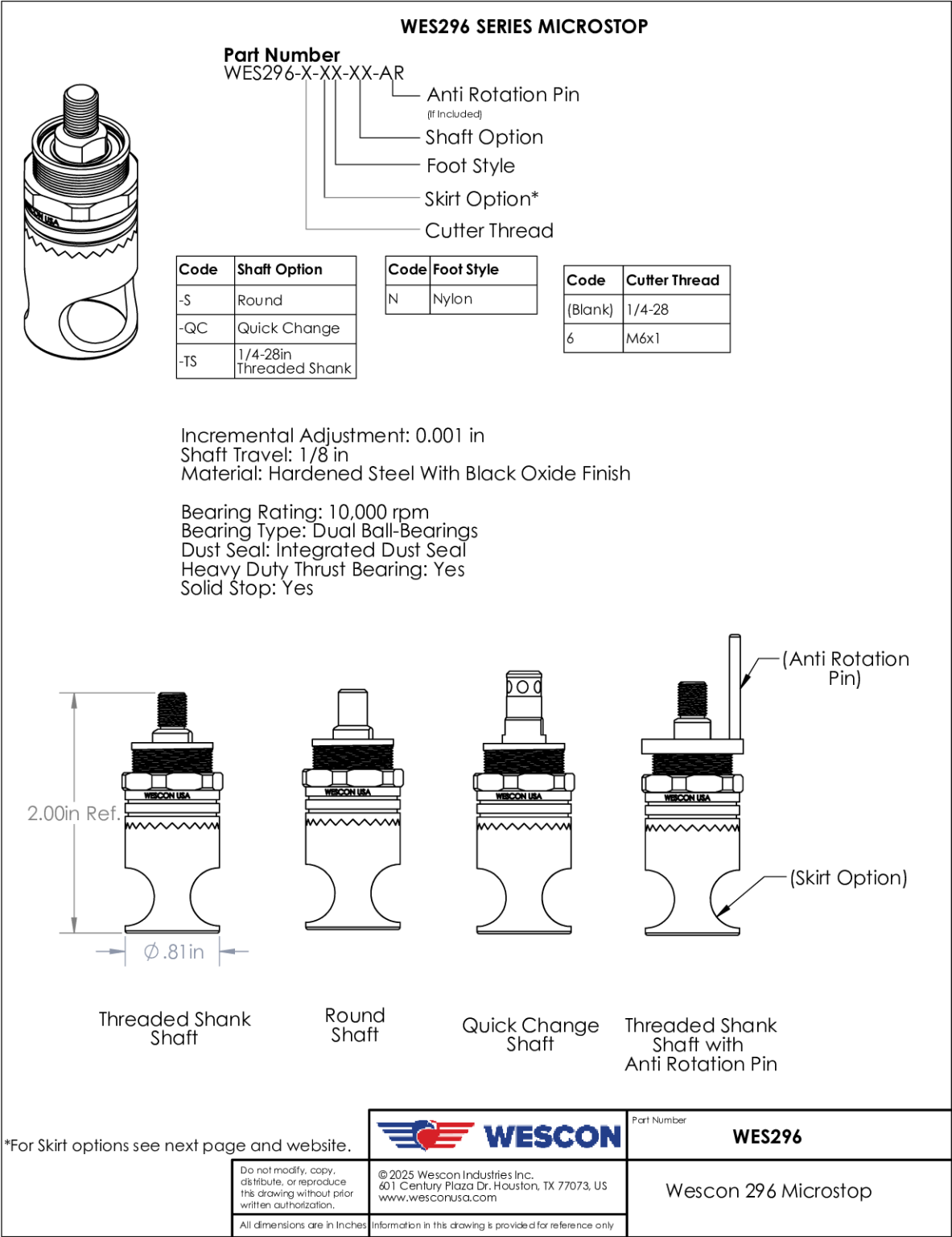


\* The image represents the general look of the series. Actual product may vary based on options selected.

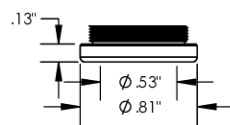
## SPECIFICATIONS

|                           |                    |
|---------------------------|--------------------|
| Measurement Type          | Metric             |
| Bearing Rating            | 10,000 rpm         |
| Bearing Type              | Dual Ball Bearings |
| Heavy Duty Thrust Bearing | No                 |
| Incremental Adjustment    | 0.001 in           |
| Shaft Travel              | 1/8 in             |
| Cutter Thread             | M6x1               |
| Shaft                     | Round              |
| Shaft Diameter            | 1/4 in             |
| Cutter Capacity           | 5/8 in             |
| Skirt                     | 3-Leg              |
| Solid Stop                | Yes                |
| Material                  | Steel              |
| Country of Origin         | USA                |

ADDITIONAL IMAGES AND DRAWINGS



### Foot Style For Internal Thread

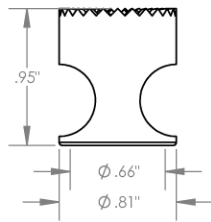


| Part Number | Material |
|-------------|----------|
| 29620-N     | Nylon    |
| 29620-S     | Steel    |
| 29620-P     | Phenolic |

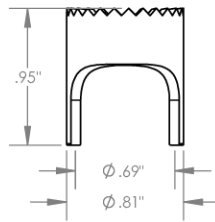
|   |   |                      |               |
|---|---|----------------------|---------------|
|              |   | Part Number          | <b>WES296</b> |
| Do not modify, copy, distribute, or reproduce this drawing without prior written authorization. | © 2025 Wescon Industries Inc.<br>601 Century Plaza Dr. Houston, TX 77073, US<br>www.wesconusa.com | Wescon 296 Microstop |               |
| All dimensions are in inches  | Information in this drawing is provided for reference only  |                      |               |

Image 2

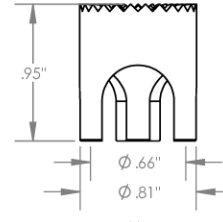
### Skirt Option



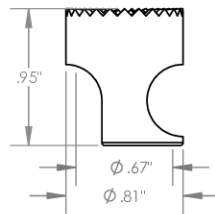
**S**  
Straight  
Cutter  $\phi 5/8"$



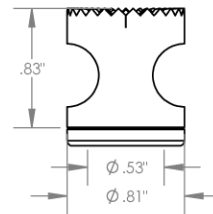
**S2L**  
2-Leg  
Cutter  $\phi 5/8"$



**S3L**  
3-Leg  
Cutter  $\phi 5/8"$



**SCA**  
Straight Cutaway  
Cutter  $\phi 5/8"$



**I**  
Internal Thread  
Cutter  $\phi 1/2"$   
Choose Foot Style From Table


|   |   |                      |               |
|---|---|----------------------|---------------|
|              |   | Part Number          | <b>WES296</b> |
| Do not modify, copy, distribute, or reproduce this drawing without prior written authorization. | © 2025 Wescon Industries Inc.<br>601 Century Plaza Dr. Houston, TX 77073, US<br>www.wesconusa.com | Wescon 296 Microstop |               |
| All dimensions are in inches  | Information in this drawing is provided for reference only  |                      |               |

Image 3