

DATASHEET

PART NUMBER

WES296-6-SCA-TS-AR

**Wescon 296 Microstop - M6x1 - 15 mm Cutter
Capacity - Straight Cutaway**

CLOSE QUARTERS USE

WEBSITE

<https://www.wesconusa.com/products/WES296-6-SCA-TS-AR>



* The image represents the general look of the series. Actual product may vary based on options selected.

SPECIFICATIONS

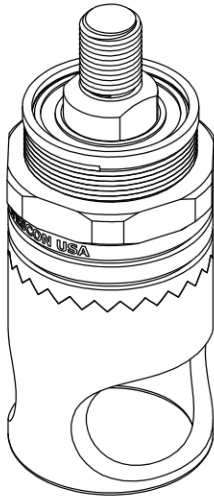
| | |
|----------------------------------|---|
| Measurement Type | Metric |
| Bearing Rating | 10,000 rpm |
| Bearing Type | Dual Ball Bearings |
| Heavy Duty Thrust Bearing | No |
| Incremental Adjustment | 0.025 mm |
| Shaft Travel | 3.175 mm |
| Cutter Thread | M6x1 |
| Shaft | Threaded |
| Shaft Diameter | 6.35 mm |
| Cutter Capacity | 15 mm |
| Skirt | Straight Cutaway |
| Skirt Description | 20.57 mm OD 16.76 mm ID 15 mm Cutter Capacity |
| Anti Rotation Pin | Included |
| Solid Stop | Yes |
| Material | Steel |
| Country of Origin | USA |

ADDITIONAL IMAGES AND DRAWINGS



Image 0

WES296 Series Microstop



Part Number
WES296-X-XX-XX-AR

- Anti Rotation Pin (If Included)
- Shaft Option
- Foot Style
- Skirt Option*
- Cutter Thread

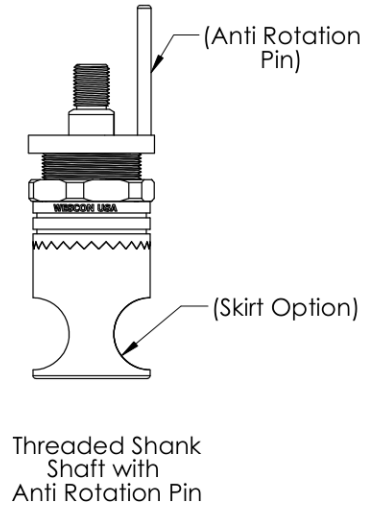
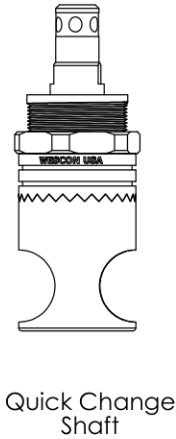
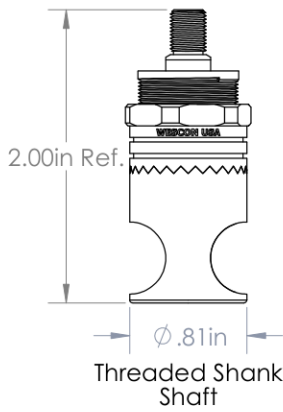
| Code | Cutter Thread |
|---------|---------------|
| (Blank) | 1/4-28 |
| 6 | M6x1 |

| Code | Foot Style |
|------|------------|
| N | Nylon |

| Code | Shaft Option |
|------|-------------------------|
| S | Round |
| QC | Quick Change |
| TS | 1/4-28in Threaded Shank |

Incremental Adjustment: 0.001 in
Shaft Travel: 1/8 in
Material: Carbon Steel Body With Hardened Tool Steel Shaft

Bearing Rating: 10,000 rpm
Bearing Type: Dual Ball-Bearings
Dust Seal: Integrated Dust Seal
Heavy Duty Thrust Bearing: No
Solid Stop: Yes



*For Skirt options see next page and website.



Part Number

WES296

Do not modify, copy, distribute, or reproduce this drawing without prior written authorization.

© 2025 Wescon Industries Inc.
601 Century Plaza Dr. Houston, TX 77073, US
www.wesconusa.com

Wescon 296 Microstop

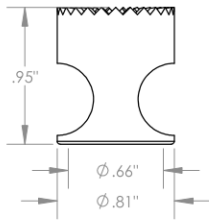
Revision 03

All dimensions are in inches

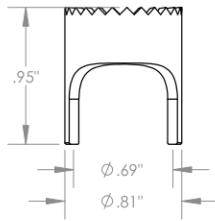
Information in this drawing is provided for reference only

Image 1

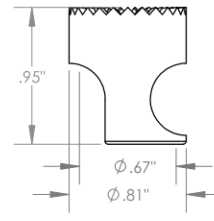
Skirt Option



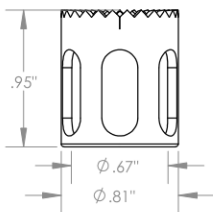
S
Straight
Cutter $\phi 5/8"$ ($\phi 16\text{mm}$)



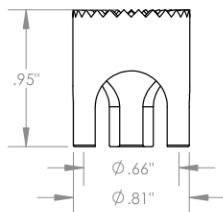
S2L
2-Leg
Cutter $\phi 5/8"$ ($\phi 16\text{mm}$)



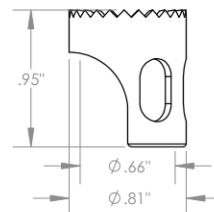
SCA
Straight Cutaway
Cutter $\phi 5/8"$ ($\phi 16\text{mm}$)



SL
Slotted
Cutter $\phi 5/8"$ ($\phi 16\text{mm}$)

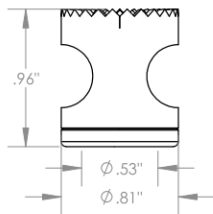


S3L
3-Leg
Cutter $\phi 5/8"$ ($\phi 16\text{mm}$)

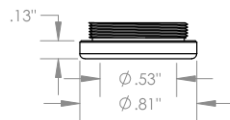


SSCA
Slotted Straight Cutaway
Cutter $\phi 5/8"$ ($\phi 16\text{mm}$)

Foot Style For Internal Thread



I
Internal Thread
Cutter $\phi 1/2"$ ($\phi 12\text{mm}$)
Choose Foot Style From Table



| Part Number | Material |
|-------------|----------|
| 29620-N | Nylon |
| 29620-S | Steel |
| 29620-P | Phenolic |



Part Number

WES296

Do not modify, copy, distribute, or reproduce this drawing without prior written authorization.

© 2025 Wescon Industries Inc.
601 Century Plaza Dr. Houston, TX 77073, US
www.wesconusa.com

Wescon 296 Microstop

Revision 03

All dimensions are in Inches

Information in this drawing is provided for reference only

Image 2