

DATASHEET

PART NUMBER

WES296-IN-TS

**Wescon 296 Microstop - 1/4-28 - 1/2" Cutter
Capacity - Internal Thread Skirt - Nylon Foot**

CLOSE QUARTERS USE

WEBSITE

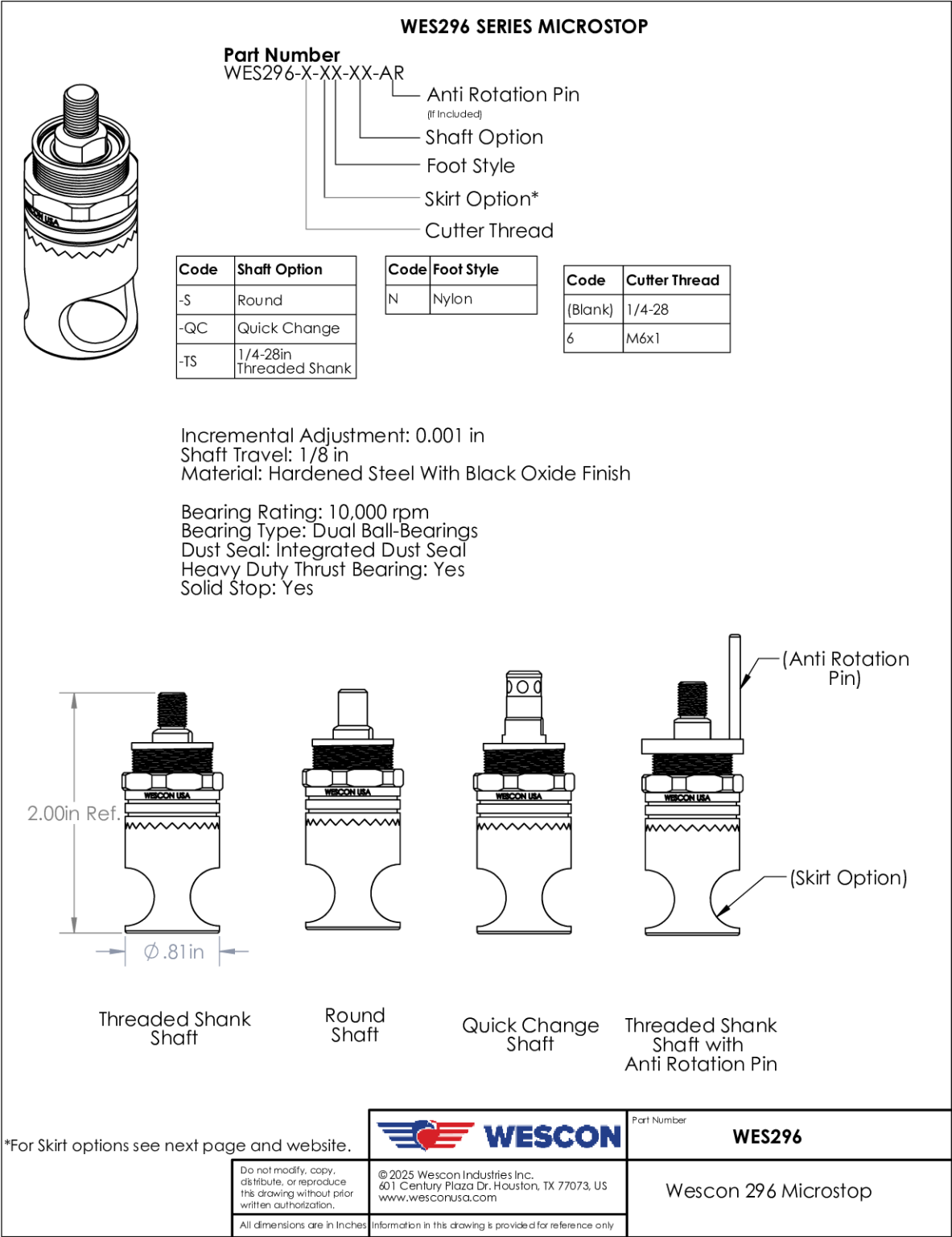
<https://www.wesconusa.com/products/WES296-IN-TS>



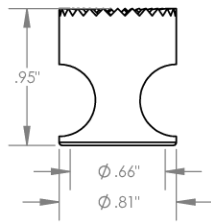
SPECIFICATIONS

Measurement Type	Imperial
Bearing Rating	10,000 rpm
Bearing Type	Dual Ball Bearings
Heavy Duty Thrust Bearing	No
Incremental Adjustment	0.001 in
Shaft Travel	1/8 in
Cutter Thread	1/4-28
Shaft	Threaded
Shaft Diameter	1/4 in
Cutter Capacity	1/2 in
Skirt	Internal Thread
Skirt Description	1/2 in Cutter Capacity
Foot	Nylon
Solid Stop	Yes
Material	Steel
Country of Origin	USA

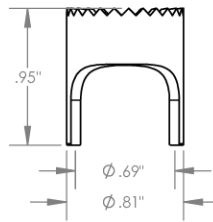
ADDITIONAL IMAGES AND DRAWINGS



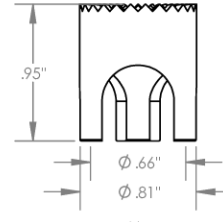
Skirt Option



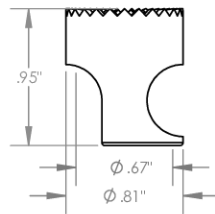
S
Straight
Cutter $\phi 5/8"$



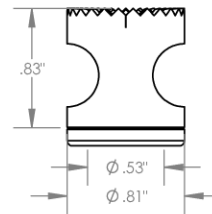
S2L
2-Leg
Cutter $\phi 5/8"$



S3L
3-Leg
Cutter $\phi 5/8"$



SCA
Straight Cutaway
Cutter $\phi 5/8"$



I
Internal Thread
Cutter $\phi 1/2"$
Choose Foot Style From Table


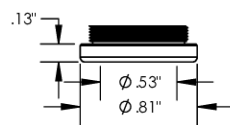
		Part Number	WES296
Do not modify, copy, distribute, or reproduce this drawing without prior written authorization.	© 2025 Wescon Industries Inc. 601 Century Plaza Dr. Houston, TX 77073, US www.wesconusa.com	Wescon 296 Microstop	
All dimensions are in inches	Information in this drawing is provided for reference only		

Image 2

Foot Style For Internal Thread



Part Number	Material
29620-N	Nylon
29620-S	Steel
29620-P	Phenolic

		Part Number	WES296
Do not modify, copy, distribute, or reproduce this drawing without prior written authorization.	© 2025 Wescon Industries Inc. 601 Century Plaza Dr. Houston, TX 77073, US www.wesconusa.com	Wescon 296 Microstop	
All dimensions are in inches	Information in this drawing is provided for reference only		

Image 3