

DATASHEET

PART NUMBER

WES296-IN

**Wescon 296 Microstop - 1/4-28 - 1/2" Cutter
Capacity - Internal Nylon Foot**

CLOSE QUARTERS USE

WEBSITE

<https://www.wesconusa.com/products/WES296-IN>

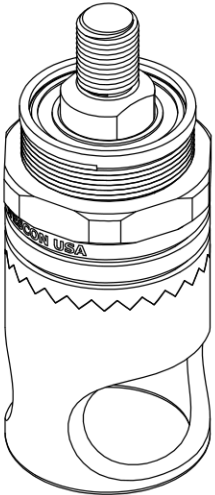

* The image represents the general look of the series. Actual product may vary based on options selected.

SPECIFICATIONS

Measurement Type	Imperial
Bearing Rating	10,000 rpm
Bearing Type	Dual Ball Bearings
Heavy Duty Thrust Bearing	No
Incremental Adjustment	0.001 in
Shaft Travel	1/8 in
Cutter Thread	1/4-28
Shaft	Round
Shaft Diameter	1/4 in
Cutter Capacity	1/2 in
Skirt	Internal Thread
Skirt Description	1/2 in Cutter Capacity
Foot	Nylon
Solid Stop	Yes
Material	Steel
Country of Origin	USA

ADDITIONAL IMAGES AND DRAWINGS

WES296 Series Microstop



Part Number
WES296-X-XX-XX-AR

- Anti Rotation Pin (If Included)
- Shaft Option
- Foot Style
- Skirt Option*
- Cutter Thread

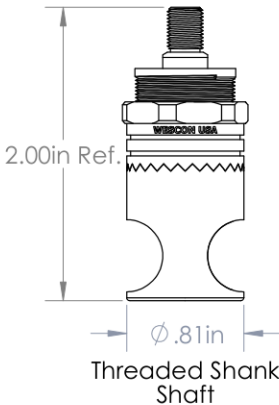
Code	Cutter Thread
(Blank)	1/4-28
6	M6x1

Code	Foot Style
N	Nylon

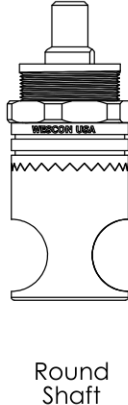
Code	Shaft Option
S	Round
QC	Quick Change
TS	1/4-28in Threaded Shank

Incremental Adjustment: 0.001 in
 Shaft Travel: 1/8 in
 Material: Carbon Steel Body With Hardened Tool Steel Shaft

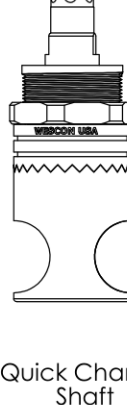
Bearing Rating: 10,000 rpm
 Bearing Type: Dual Ball-Bearings
 Dust Seal: Integrated Dust Seal
 Heavy Duty Thrust Bearing: No
 Solid Stop: Yes



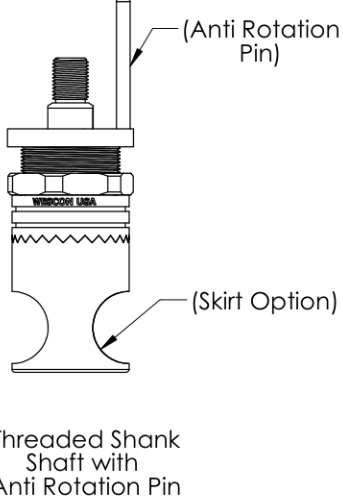
Threaded Shank Shaft



Round Shaft



Quick Change Shaft




Threaded Shank Shaft with Anti Rotation Pin

(Anti Rotation Pin)

(Skirt Option)

*For Skirt options see next page and website.



WESCON

Part Number **WES296**

Revision 03

Do not modify, copy, distribute, or reproduce this drawing without prior written authorization.

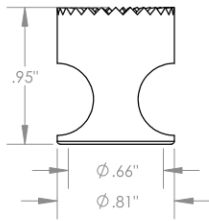
© 2025 Wescon Industries Inc. 601 Century Plaza Dr. Houston, TX 77073. US www.wesconusa.com

Information in this drawing is provided for reference only

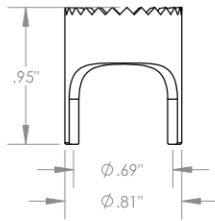
Wescon 296 Microstop

Image 1

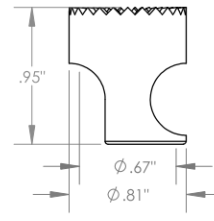
Skirt Option



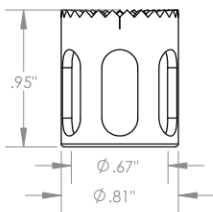
S
Straight
Cutter $\phi 5/8"$ ($\phi 16\text{mm}$)



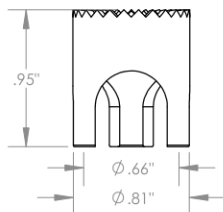
S2L
2-Leg
Cutter $\phi 5/8"$ ($\phi 16\text{mm}$)



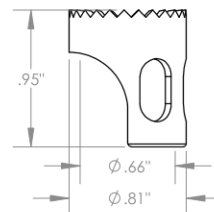
SCA
Straight Cutaway
Cutter $\phi 5/8"$ ($\phi 16\text{mm}$)



SL
Slotted
Cutter $\phi 5/8"$ ($\phi 16\text{mm}$)

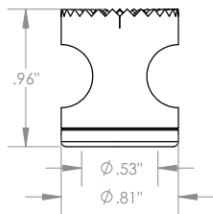


S3L
3-Leg
Cutter $\phi 5/8"$ ($\phi 16\text{mm}$)

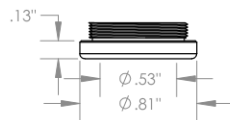


SSCA
Slotted Straight Cutaway
Cutter $\phi 5/8"$ ($\phi 16\text{mm}$)

Foot Style For Internal Thread



I
Internal Thread
Cutter $\phi 1/2"$ ($\phi 12\text{mm}$)
Choose Foot Style From Table



Part Number	Material
29620-N	Nylon
29620-S	Steel
29620-P	Phenolic



Part Number

WES296

Do not modify, copy, distribute, or reproduce this drawing without prior written authorization.

© 2025 Wescon Industries Inc.
601 Century Plaza Dr. Houston, TX 77073, US
www.wesconusa.com

Wescon 296 Microstop

Revision 03

All dimensions are in Inches

Information in this drawing is provided for reference only

Image 2