

DATASHEET

PART NUMBER

WES296-S3L-TS

**Wescon 296 Microstop - 1/4-28 - 5/8" Cutter
Capacity - 3-Leg Skirt**

CLOSE QUARTERS USE

WEBSITE

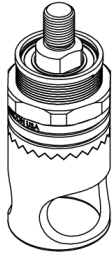
<https://www.wesconusa.com/products/WES296-S3L-TS>



SPECIFICATIONS

Measurement Type	Imperial
Bearing Rating	10,000 rpm
Bearing Type	Dual Ball Bearings
Heavy Duty Thrust Bearing	No
Incremental Adjustment	0.001 in
Shaft Travel	1/8 in
Cutter Thread	1/4-28
Shaft	Threaded
Shaft Diameter	1/4 in
Cutter Capacity	5/8 in
Skirt	3-Leg
Solid Stop	Yes
Material	Steel
Country of Origin	USA

ADDITIONAL IMAGES AND DRAWINGS



Part Number
WES296-XX-XX-AR

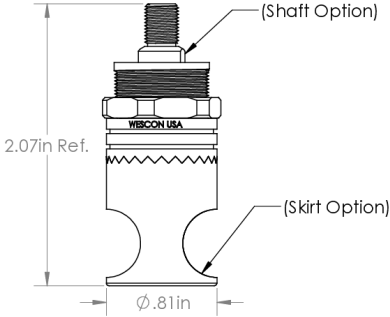
- Anti Rotation Pin (If Included)
- Shaft Option
- Foot Style
- Skirt Option*

Code	Shaft Option
-QC	Quick Change
-TS	1/4-28in Threaded Shank

Code	Foot Style
N	Nylon

Incremental Adjustment: 0.0005 in
Shaft Travel: 0.300 in
Cutter Thread: 1/4-28

Bearing Rating: 10,000 rpm
Bearing Type: Dual Ball-Bearings
Dust Seal: Integrated Dust Seal
Heavy Duty Thrust Bearing: Yes
Solid Stop: Yes



2.07in Ref.

(Shaft Option)


(Skirt Option)

Ø .81in

*For Skirt options see next page and website.

All dimensions are in inches

Information in this drawing is provided for reference only

**WESCON**

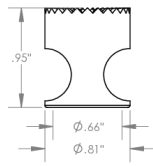
© 2025 Wescon Industries Inc.
601 Century Plaza Dr. Houston, TX 77073, US
www.wesconusa.com

Part Number
WES296

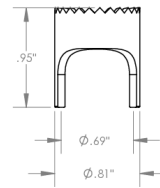
Wescon 296 Microstop

Image 1

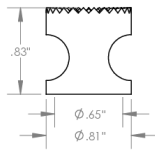
Skirt Option



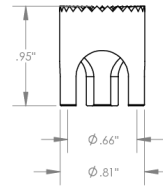
S
Straight
Cutter $\phi 5/8"$



S2L
2-Leg
Cutter $\phi 5/8"$



I
Internal Thread
Cutter $\phi 1/2"$
Choose Foot Style From Table



S3L
3-Leg
Cutter $\phi 5/8"$



© 2025 Wescon Industries Inc.
601 Century Plaza Dr. Houston, TX 77073, US
www.wesconusa.com

Part Number

WES296

Wescon 296 Microstop

All dimensions are in inches

Information in this drawing is provided for reference only

Image 2