

## DATASHEET

### PART NUMBER

**WES296-S3L**

**Wescon 296 Microstop - 1/4-28 - 5/8" Cutter  
Capacity - 3-Leg Skirt**

CLOSE QUARTERS USE

### WEBSITE

<https://www.wesconusa.com/products/WES296-S3L>

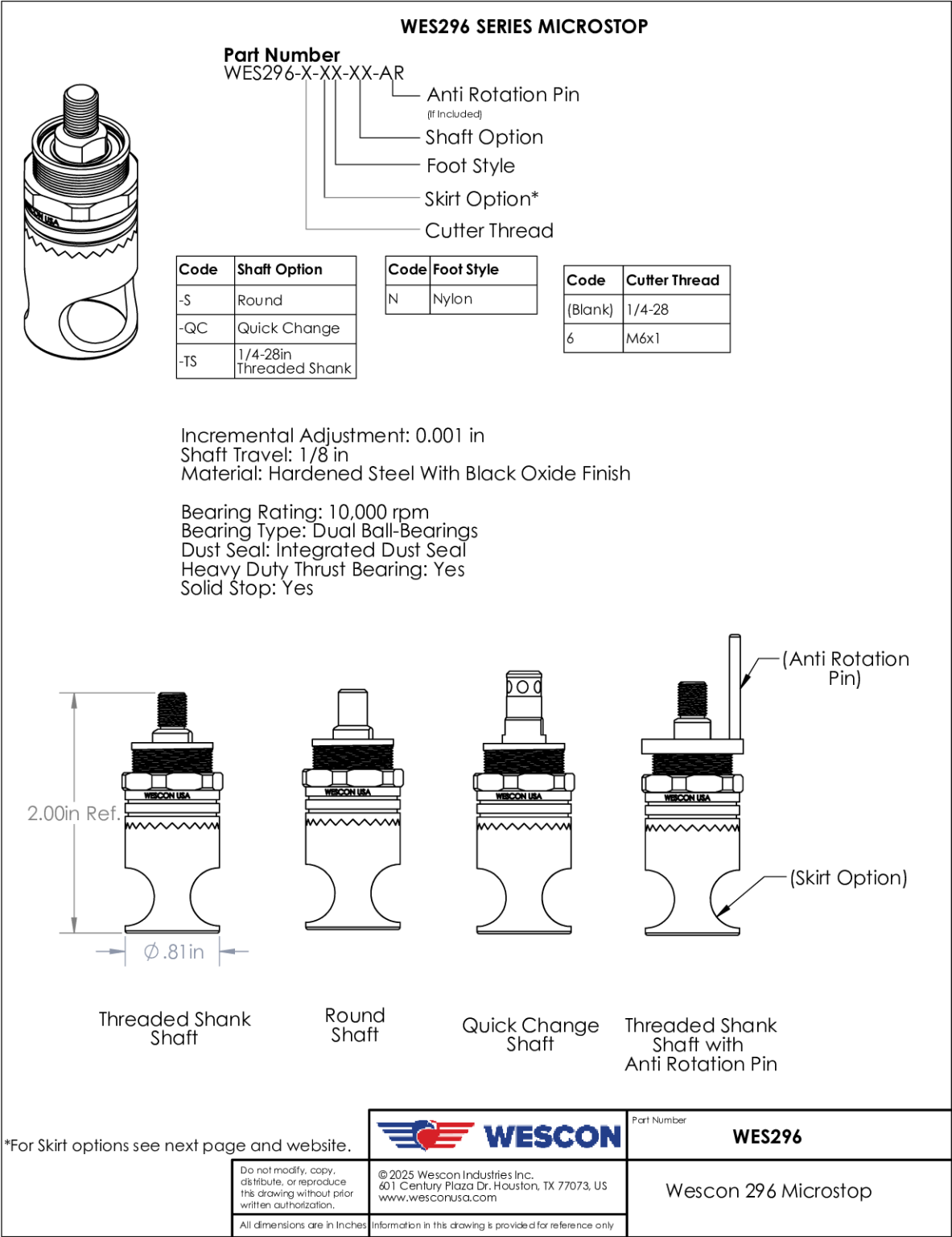


\* The image represents the general look of the series. Actual product may vary based on options selected.

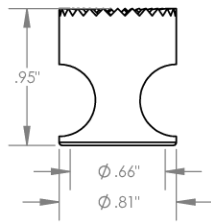
## SPECIFICATIONS

Measurement Type	Imperial
Bearing Rating	10,000 rpm
Bearing Type	Dual Ball Bearings
Heavy Duty Thrust Bearing	No
Incremental Adjustment	0.001 in
Shaft Travel	1/8 in
Cutter Thread	1/4-28
Shaft	Round
Shaft Diameter	1/4 in
Cutter Capacity	5/8 in
Skirt	3-Leg
Solid Stop	Yes
Material	Steel
Country of Origin	USA

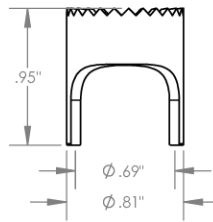
ADDITIONAL IMAGES AND DRAWINGS



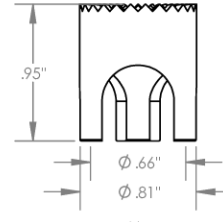
## Skirt Option



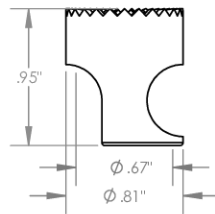
**S**  
Straight  
Cutter  $\phi 5/8"$



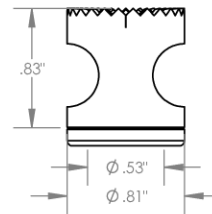
**S2L**  
2-Leg  
Cutter  $\phi 5/8"$



**S3L**  
3-Leg  
Cutter  $\phi 5/8"$



**SCA**  
Straight Cutaway  
Cutter  $\phi 5/8"$



**I**  
Internal Thread  
Cutter  $\phi 1/2"$   
Choose Foot Style From Table


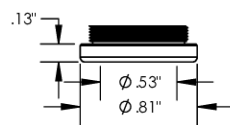
		Part Number	<b>WES296</b>
Do not modify, copy, distribute, or reproduce this drawing without prior written authorization.	© 2025 Wescon Industries Inc. 601 Century Plaza Dr. Houston, TX 77073, US www.wesconusa.com	Wescon 296 Microstop	
All dimensions are in inches	Information in this drawing is provided for reference only		

Image 2

### Foot Style For Internal Thread



Part Number	Material
29620-N	Nylon
29620-S	Steel
29620-P	Phenolic


		Part Number	<b>WES296</b>
Do not modify, copy, distribute, or reproduce this drawing without prior written authorization.		Wescon 296 Microstop	
© 2025 Wescon Industries Inc. 601 Century Plaza Dr. Houston, TX 77073, US <a href="http://www.wesconusa.com">www.wesconusa.com</a>			
All dimensions are in inches	Information in this drawing is provided for reference only		

Image 3