

DATASHEET

PART NUMBER

WES296-SSCA-TS-AR

**Wescon 296 Microstop - 1/4-28 - 5/8" Cutter
Capacity - Slotted Straight Cutaway Skirt**

CLOSE QUARTERS USE

WEBSITE

<https://www.wesconusa.com/products/WES296-SSCA-TS-AR>



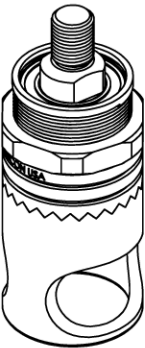
* The image represents the general look of the series. Actual product may vary based on options selected.

SPECIFICATIONS

Measurement Type	Imperial
Bearing Rating	10,000 rpm
Bearing Type	Dual Ball Bearings
Heavy Duty Thrust Bearing	No
Incremental Adjustment	0.001 in
Shaft Travel	1/8 in
Cutter Thread	1/4-28
Shaft	Threaded
Shaft Diameter	1/4 in
Cutter Capacity	5/8 in
Skirt	Slotted Straight Cutaway
Skirt Description	0.81 in OD 0.66 in ID 5/8 in Cutter Capacity
Anti Rotation Pin	Included
Solid Stop	Yes
Material	Steel
Country of Origin	USA

ADDITIONAL IMAGES AND DRAWINGS

WES296 SERIES MICROSTOP



Part Number
WES296-X-XX-XX-AR

- Anti Rotation Pin (If Included)
- Shaft Option
- Foot Style
- Skirt Option*
- Cutter Thread

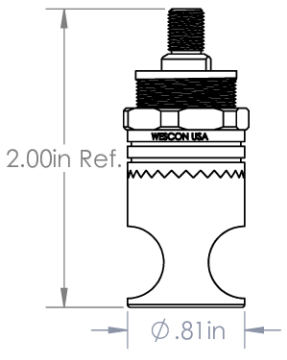
Code	Shaft Option
-S	Round
-QC	Quick Change
-TS	1/4-28in Threaded Shank

Code	Foot Style
N	Nylon


Code	Cutter Thread
(Blank)	1/4-28
6	M6x1

Incremental Adjustment: 0.001 in
 Shaft Travel: 1/8 in
 Material: Hardened Steel With Black Oxide Finish


Bearing Rating: 10,000 rpm
 Bearing Type: Dual Ball-Bearings
 Dust Seal: Integrated Dust Seal
 Heavy Duty Thrust Bearing: Yes
 Solid Stop: Yes



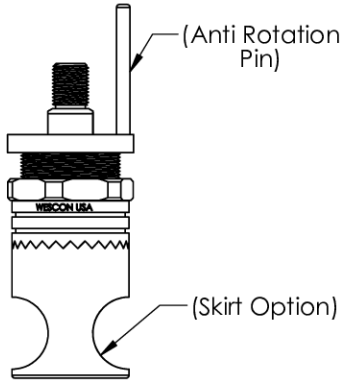
Threaded Shank Shaft



Round Shaft



Quick Change Shaft



Threaded Shank Shaft with Anti Rotation Pin
(Anti Rotation Pin)
(Skirt Option)


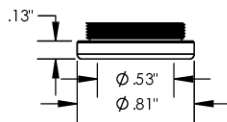
*For Skirt options see next page and website.		Part Number WES296
Do not modify, copy, distribute, or reproduce this drawing without prior written authorization.	© 2025 Wescon Industries Inc. 601 Century Plaza Dr. Houston, TX 77073, US www.wesconusa.com	Wescon 296 Microstop
All dimensions are in inches	Information in this drawing is provided for reference only	

Image 1

**Foot Style
For Internal Thread**



Part Number	Material
29620-N	Nylon
29620-S	Steel
29620-P	Phenolic


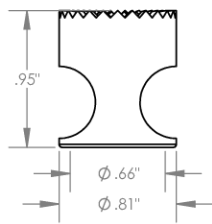
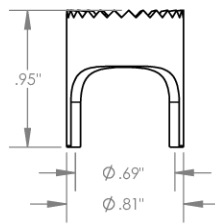
		Part Number WES296
Do not modify, copy, distribute, or reproduce this drawing without prior written authorization.	© 2025 Wescon Industries Inc. 601 Century Plaza Dr. Houston, TX 77073, US www.wesconusa.com	Wescon 296 Microstop
All dimensions are in Inches	Information in this drawing is provided for reference only	

Image 2

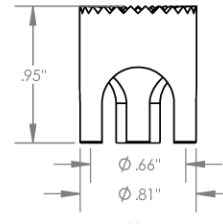
Skirt Option



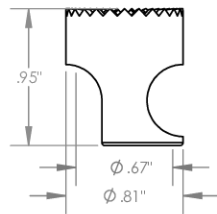
S
Straight
Cutter $\phi 5/8"$



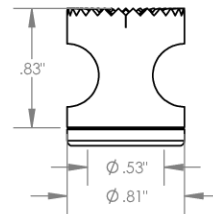
S2L
2-Leg
Cutter $\phi 5/8"$



S3L
3-Leg
Cutter $\phi 5/8"$



SCA
Straight Cutaway
Cutter $\phi 5/8"$



I
Internal Thread
Cutter $\phi 1/2"$
Choose Foot Style From Table

		Part Number WES296
Do not modify, copy, distribute, or reproduce this drawing without prior written authorization.	© 2025 Wescon Industries Inc. 601 Century Plaza Dr. Houston, TX 77073, US www.wesconusa.com	Wescon 296 Microstop
All dimensions are in Inches	Information in this drawing is provided for reference only	

Image 3