

## DATASHEET

PART NUMBER

### WES296-SSCA-TS

**Wescon 296 Microstop - 1/4-28 - 5/8" Cutter  
Capacity - Slotted Straight Cutaway Skirt**

CLOSE QUARTERS USE

WEBSITE

<https://www.wesconusa.com/products/WES296-SSCA-TS>



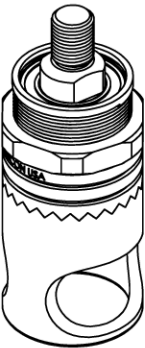
\* The image represents the general look of the series. Actual product may vary based on options selected.

## SPECIFICATIONS

Measurement Type	Imperial
Bearing Rating	10,000 rpm
Bearing Type	Dual Ball Bearings
Heavy Duty Thrust Bearing	No
Incremental Adjustment	0.001 in
Shaft Travel	1/8 in
Cutter Thread	1/4-28
Shaft	Threaded
Shaft Diameter	1/4 in
Cutter Capacity	5/8 in
Skirt	Slotted Straight Cutaway
Skirt Description	0.81 in OD 0.66 in ID 5/8 in Cutter Capacity
Solid Stop	Yes
Material	Steel
Country of Origin	USA

## ADDITIONAL IMAGES AND DRAWINGS

### WES296 SERIES MICROSTOP



**Part Number**  
WES296-X-XX-XX-AR

- Anti Rotation Pin (If Included)
- Shaft Option
- Foot Style
- Skirt Option\*
- Cutter Thread

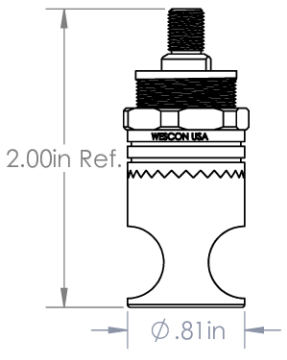
Code	Shaft Option
-S	Round
-QC	Quick Change
-TS	1/4-28in Threaded Shank

Code	Foot Style
N	Nylon


Code	Cutter Thread
(Blank)	1/4-28
6	M6x1

Incremental Adjustment: 0.001 in  
 Shaft Travel: 1/8 in  
 Material: Hardened Steel With Black Oxide Finish


Bearing Rating: 10,000 rpm  
 Bearing Type: Dual Ball-Bearings  
 Dust Seal: Integrated Dust Seal  
 Heavy Duty Thrust Bearing: Yes  
 Solid Stop: Yes



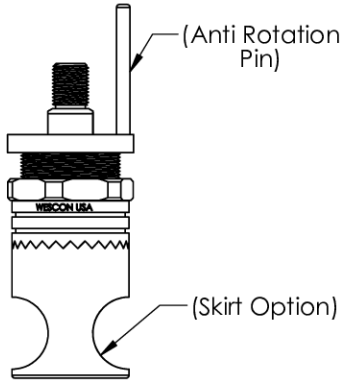
Threaded Shank Shaft



Round Shaft




Quick Change Shaft



Threaded Shank Shaft with Anti Rotation Pin

\*For Skirt options see next page and website.



Part Number  
**WES296**

Do not modify, copy, distribute, or reproduce this drawing without prior written authorization.

All dimensions are in inches

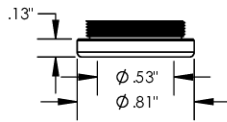
© 2025 Wescon Industries Inc.  
 601 Century Plaza Dr. Houston, TX 77073, US  
 www.wesconusa.com

Information in this drawing is provided for reference only

Wescon 296 Microstop

Image 1

**Foot Style  
For Internal Thread**

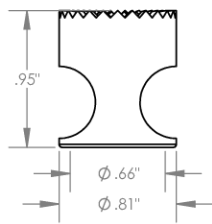


Part Number	Material
29620-N	Nylon
29620-S	Steel
29620-P	Phenolic

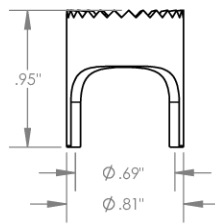
		Part Number	<b>WES296</b>
		Wescon 296 Microstop	
Do not modify, copy, distribute, or reproduce this drawing without prior written authorization.	© 2025 Wescon Industries Inc. 601 Century Plaza Dr. Houston, TX 77073, US www.wesconusa.com		
All dimensions are in Inches	Information in this drawing is provided for reference only		

Image 2

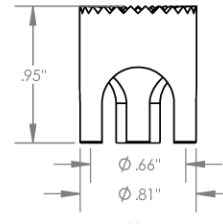
### Skirt Option



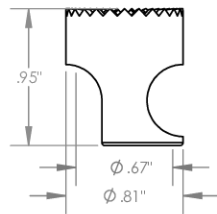
**S**  
Straight  
Cutter  $\phi 5/8"$



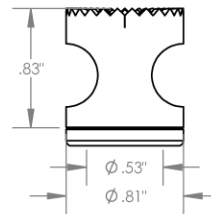
**S2L**  
2-Leg  
Cutter  $\phi 5/8"$



**S3L**  
3-Leg  
Cutter  $\phi 5/8"$



**SCA**  
Straight Cutaway  
Cutter  $\phi 5/8"$



**I**  
Internal Thread  
Cutter  $\phi 1/2"$   
Choose Foot Style From Table

		Part Number <b>WES296</b>
Do not modify, copy, distribute, or reproduce this drawing without prior written authorization.	© 2025 Wescon Industries Inc. 601 Century Plaza Dr. Houston, TX 77073, US www.wesconusa.com	<b>Wescon 296 Microstop</b>
All dimensions are in Inches	Information in this drawing is provided for reference only	

Image 3