

## DATASHEET

PART NUMBER

### WES296-SSCA

**Wescon 296 Microstop - 1/4-28 - 5/8" Cutter Capacity - Slotted Straight Cutaway Skirt**

CLOSE QUARTERS USE

WEBSITE

<https://www.wesconusa.com/products/WES296-SSCA>



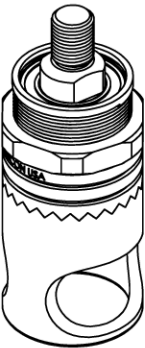
\* The image represents the general look of the series. Actual product may vary based on options selected.

## SPECIFICATIONS

Measurement Type	Imperial
Bearing Rating	10,000 rpm
Bearing Type	Dual Ball Bearings
Heavy Duty Thrust Bearing	No
Incremental Adjustment	0.001 in
Shaft Travel	1/8 in
Cutter Thread	1/4-28
Shaft	Round
Shaft Diameter	1/4 in
Cutter Capacity	5/8 in
Skirt	Slotted Straight Cutaway
Skirt Description	0.81 in OD 0.66 in ID 5/8 in Cutter Capacity
Solid Stop	Yes
Material	Steel
Country of Origin	USA

## ADDITIONAL IMAGES AND DRAWINGS

### WES296 SERIES MICROSTOP



**Part Number**  
WES296-X-XX-XX-AR

- Anti Rotation Pin (If Included)
- Shaft Option
- Foot Style
- Skirt Option\*
- Cutter Thread

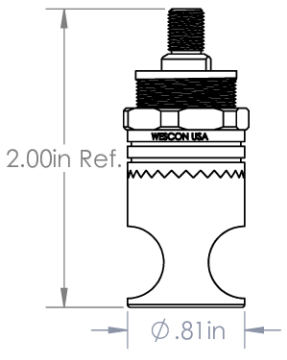
Code	Shaft Option
-S	Round
-QC	Quick Change
-TS	1/4-28in Threaded Shank

Code	Foot Style
N	Nylon


Code	Cutter Thread
(Blank)	1/4-28
6	M6x1

Incremental Adjustment: 0.001 in  
 Shaft Travel: 1/8 in  
 Material: Hardened Steel With Black Oxide Finish


Bearing Rating: 10,000 rpm  
 Bearing Type: Dual Ball-Bearings  
 Dust Seal: Integrated Dust Seal  
 Heavy Duty Thrust Bearing: Yes  
 Solid Stop: Yes



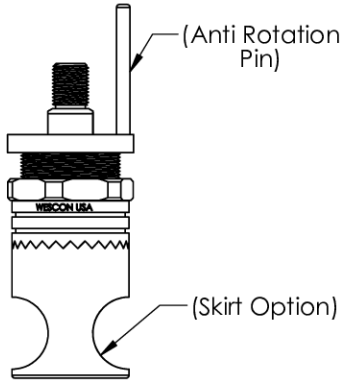
Threaded Shank Shaft



Round Shaft




Quick Change Shaft



Threaded Shank Shaft with Anti Rotation Pin  
(Anti Rotation Pin)  
(Skirt Option)

\*For Skirt options see next page and website.

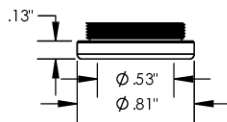


Part Number **WES296**

Do not modify, copy, distribute, or reproduce this drawing without prior written authorization.	© 2025 Wescon Industries Inc. 601 Century Plaza Dr. Houston, TX 77073, US www.wesconusa.com	Wescon 296 Microstop
All dimensions are in inches		Information in this drawing is provided for reference only

Image 1

**Foot Style  
For Internal Thread**



Part Number	Material
29620-N	Nylon
29620-S	Steel
29620-P	Phenolic


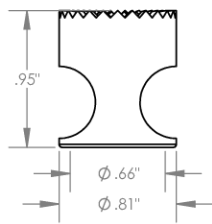
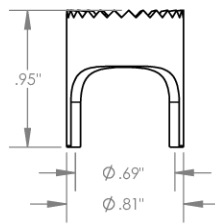
		Part Number	<b>WES296</b>
		Wescon 296 Microstop	
Do not modify, copy, distribute, or reproduce this drawing without prior written authorization.	© 2025 Wescon Industries Inc. 601 Century Plaza Dr. Houston, TX 77073, US www.wesconusa.com		
All dimensions are in Inches	Information in this drawing is provided for reference only		

Image 2

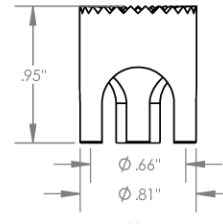
### Skirt Option



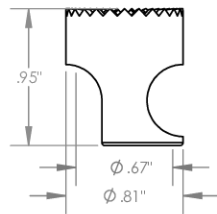
**S**  
Straight  
Cutter  $\phi 5/8"$



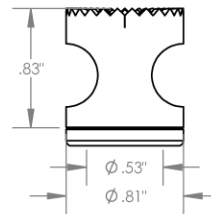
**S2L**  
2-Leg  
Cutter  $\phi 5/8"$



**S3L**  
3-Leg  
Cutter  $\phi 5/8"$



**SCA**  
Straight Cutaway  
Cutter  $\phi 5/8"$



**I**  
Internal Thread  
Cutter  $\phi 1/2"$   
Choose Foot Style From Table

		Part Number <b>WES296</b>
Do not modify, copy, distribute, or reproduce this drawing without prior written authorization.	© 2025 Wescon Industries Inc. 601 Century Plaza Dr. Houston, TX 77073, US www.wesconusa.com	<b>Wescon 296 Microstop</b>
All dimensions are in Inches	Information in this drawing is provided for reference only	

Image 3