

DATASHEET

PART NUMBER

WES297-6-S2L-TS-AR

**Wescon 297 Stainless Steel Microstop - M6x1 -
15 mm Cutter Capacity - 2-Leg**

CLOSE QUARTERS USE STAINLESS STEEL

WEBSITE

<https://www.wesconusa.com/products/WES297-6-S2L-TS-AR>



* The image represents the general look of the series. Actual product may vary based on options selected.

SPECIFICATIONS

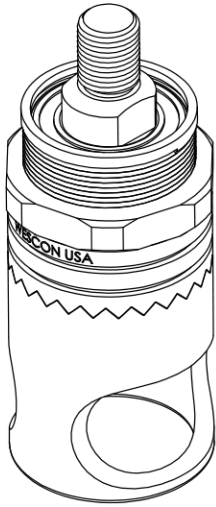
Measurement Type	Metric
Bearing Rating	10,000 rpm
Bearing Type	Dual Ball Bearings
Heavy Duty Thrust Bearing	No
Incremental Adjustment	0.025 mm
Shaft Travel	3.175 mm
Cutter Thread	M6x1
Shaft	Threaded
Shaft Diameter	6.35 mm
Cutter Capacity	15 mm
Skirt	2-Leg
Anti Rotation Pin	Included
Solid Stop	Yes
Material	Stainless Steel
Country of Origin	USA

ADDITIONAL IMAGES AND DRAWINGS



Image 0

WES297 Series Microstop



Part Number
WES297-X-XX-XX-AR

- Anti Rotation Pin (If Included)
- Shaft Option
- Foot Style
- Skirt Option*
- Cutter Thread

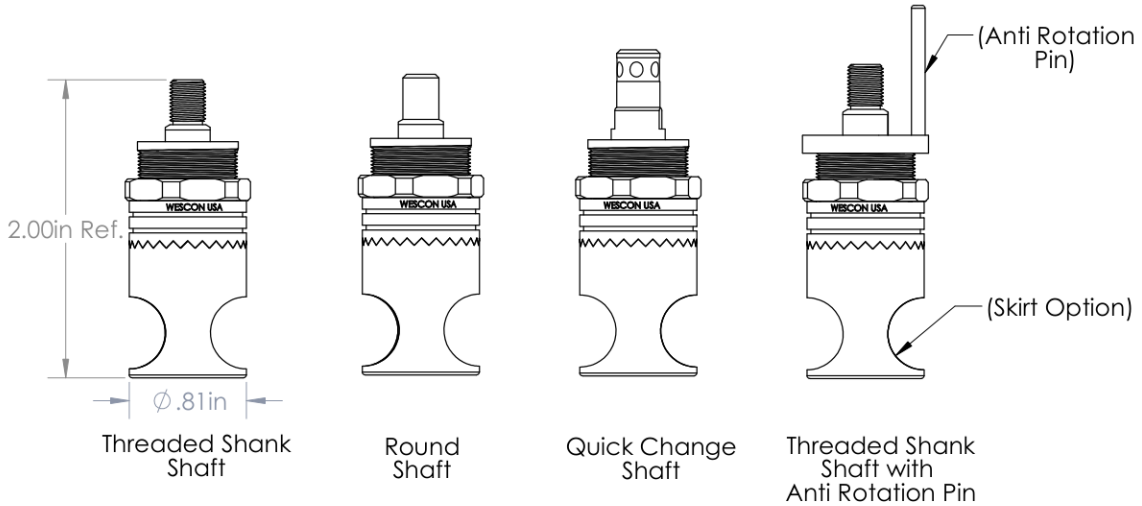
Code	Cutter Thread
(Blank)	1/4-28
6	M6x1

Code	Foot Style
N	Nylon

Code	Shaft Option
S	Round
QC	Quick Change
TS	1/4-28in Threaded Shank

Incremental Adjustment: 0.001 in
Shaft Travel: 1/8 in
Material: Stainless Steel

Bearing Rating: 10,000 rpm
Bearing Type: Dual Ball-Bearings
Dust Seal: Integrated Dust Seal
Heavy Duty Thrust Bearing: No
Solid Stop: Yes



*For Skirt options see next page and website.



Part Number

WES297

Do not modify, copy, distribute, or reproduce this drawing without prior written authorization.

© 2025 Wescon Industries Inc.
601 Century Plaza Dr. Houston, TX 77073, US
www.wesconusa.com

Wescon 297 Microstop

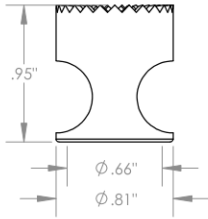
Revision 02

All dimensions are in inches

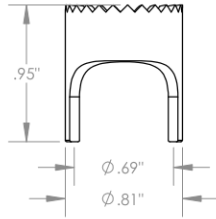
Information in this drawing is provided for reference only

Image 1

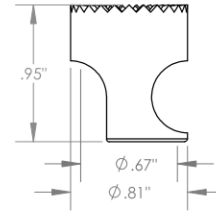
Skirt Option



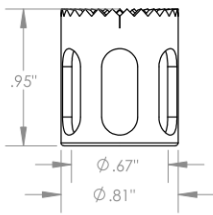
S
Straight
Cutter $\phi 5/8"$ ($\phi 16\text{mm}$)



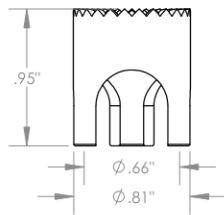
S2L
2-Leg
Cutter $\phi 5/8"$ ($\phi 16\text{mm}$)



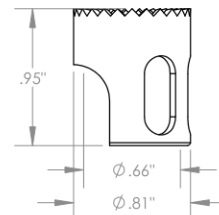
SCA
Straight Cutaway
Cutter $\phi 5/8"$ ($\phi 16\text{mm}$)



SL
Slotted
Cutter $\phi 5/8"$ ($\phi 16\text{mm}$)

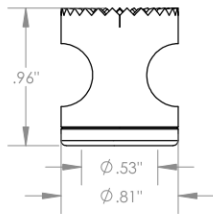


S3L
3-Leg
Cutter $\phi 5/8"$ ($\phi 16\text{mm}$)

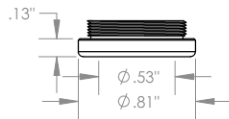


SSCA
Slotted Straight Cutaway
Cutter $\phi 5/8"$ ($\phi 16\text{mm}$)

Foot Style For Internal Thread



I
Internal Thread
Cutter $\phi 1/2"$ ($\phi 12\text{mm}$)
Choose Foot Style From Table



Part Number	Material
29620-N	Nylon
29620-S	Steel
29620-P	Phenolic



Part Number

WES297

Do not modify, copy, distribute, or reproduce this drawing without prior written authorization.

© 2025 Wescon Industries Inc.
601 Century Plaza Dr. Houston, TX 77073, US
www.wesconusa.com

Wescon 297 Microstop

Revision 02

All dimensions are in Inches

Information in this drawing is provided for reference only

Image 2