

DATASHEET

PART NUMBER

WES297-6-SL-QC

**Wescon 297 Stainless Steel Microstop - M6x1 -
15 mm Cutter Capacity - Slotted Skirt**

CLOSE QUARTERS USE STAINLESS STEEL

WEBSITE

<https://www.wesconusa.com/products/WES297-6-SL-QC>



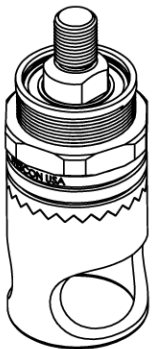
* The image represents the general look of the series. Actual product may vary based on options selected.

SPECIFICATIONS

Measurement Type	Metric
Bearing Rating	10,000 rpm
Bearing Type	Dual Ball Bearings
Heavy Duty Thrust Bearing	No
Incremental Adjustment	0.001 in
Shaft Travel	1/8 in
Cutter Thread	M6x1
Shaft	Quick Change
Shaft Diameter	1/4 in
Cutter Capacity	15 mm
Skirt	Slotted
Skirt Description	20.57 mm OD 16.76 mm ID 15 mm Cutter Capacity
Solid Stop	Yes
Material	Stainless Steel
Country of Origin	USA

ADDITIONAL IMAGES AND DRAWINGS

WES297 SERIES MICROSTOP



Part Number
WES297-X-XX-XX-AR

- └── Anti Rotation Pin (If Included)
- └── Shaft Option
- └── Foot Style
- └── Skirt Option*
- └── Cutter Thread

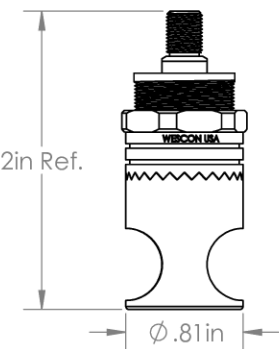
Code	Shaft Option
-S	Round
-QC	Quick Change
-TS	1/4-28in Threaded Shank

Code	Foot Style
N	Nylon


Code	Cutter Thread
(Blank)	1/4-28
6	M6x1

Incremental Adjustment: 0.001 in
 Shaft Travel: 1/8 in
 Cutter Thread: 1/4-28
 Material: Stainless Steel


Bearing Rating: 10,000 rpm
 Bearing Type: Dual Ball-Bearings
 Dust Seal: Integrated Dust Seal
 Heavy Duty Thrust Bearing: Yes
 Solid Stop: Yes



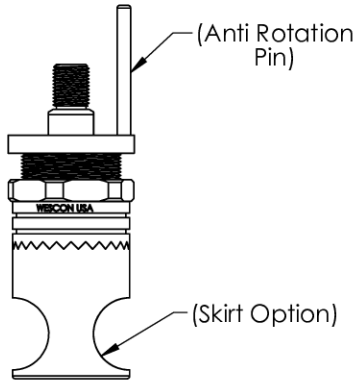
Threaded Shank Shaft



Round Shaft




Quick Change Shaft



Threaded Shank Shaft with Anti Rotation Pin

*For Skirt options see next page and website.



Part Number **WES297**

Do not modify, copy, distribute, or reproduce this drawing without prior written authorization.

All dimensions are in inches

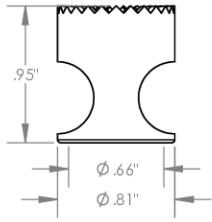
© 2025 Wescon Industries Inc.
 601 Century Plaza Dr. Houston, TX 77073, US
 www.wesconusa.com

Information in this drawing is provided for reference only

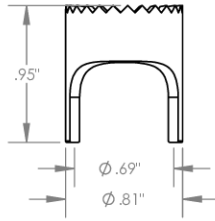
Wescon 297 Microstop

Image 1

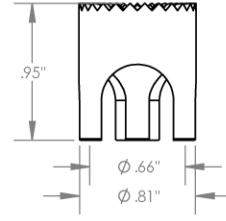
Skirt Option



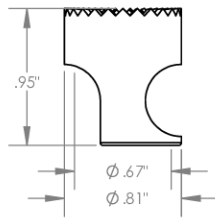
S
Straight
Cutter $\phi 5/8$ "



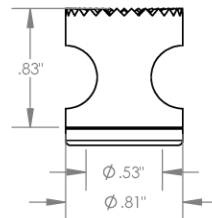
S2L
2-Leg
Cutter $\phi 5/8$ "



S3L
3-Leg
Cutter $\phi 5/8$ "



SCA
Straight Cutaway
Cutter $\phi 5/8$ "



I
Internal Thread
Cutter $\phi 1/2$ "
Choose Foot Style From Table



Part Number

WES297

Do not modify, copy, distribute, or reproduce this drawing without prior written authorization.

© 2025 Wescon Industries Inc.
601 Century Plaza Dr. Houston, TX 77073, US
www.wesconusa.com

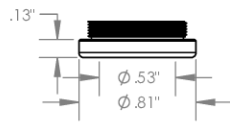
Wescon 297 Microstop

All dimensions are in inches

Information in this drawing is provided for reference only

Image 2

**Foot Style
For Internal Thread**



Part Number	Material
59620-N	Nylon
59620-S	Steel
59620-P	Phenolic

		Part Number	WES297
		Wescon 297 Microstop	
Do not modify, copy, distribute, or reproduce this drawing without prior written authorization.	© 2025 Wescon Industries Inc. 601 Century Plaza Dr. Houston, TX 77073, US www.wesconusa.com		
All dimensions are in inches	Information in this drawing is provided for reference only		

Image 3