

DATASHEET

PART NUMBER

WES297-6-SSCA-TS-AR

**Wescon 297 Stainless Steel Microstop - M6x1 -
15 mm Cutter Capacity - Slotted Straight
Cutaway Skirt**

CLOSE QUARTERS USE STAINLESS STEEL

WEBSITE

<https://www.wesconusa.com/products/WES297-6-SSCA-TS-AR>

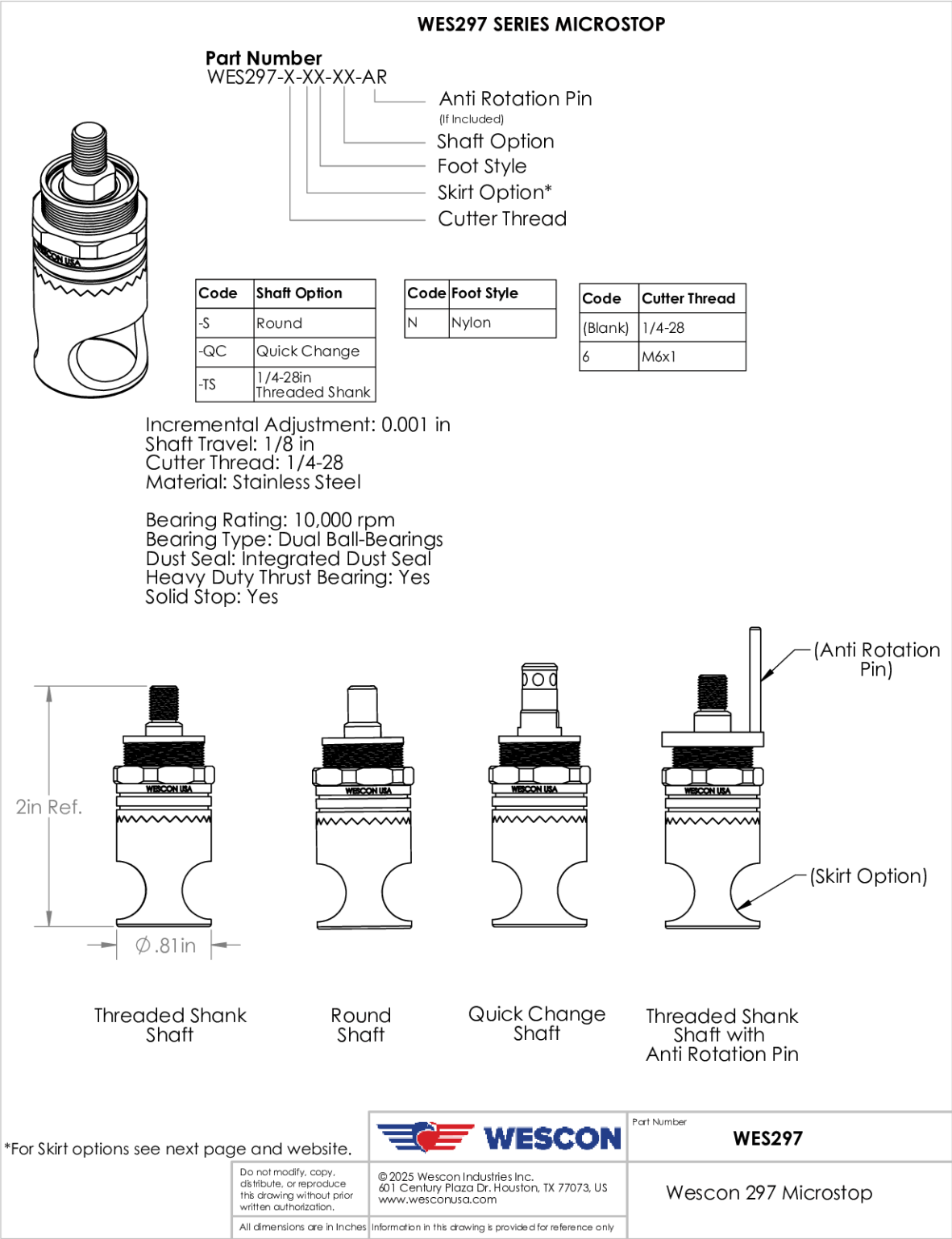


* The image represents the general look of the series. Actual product may vary based on options selected.

SPECIFICATIONS

Measurement Type	Metric
Bearing Rating	10,000 rpm
Bearing Type	Dual Ball Bearings
Heavy Duty Thrust Bearing	No
Incremental Adjustment	0.001 in
Shaft Travel	1/8 in
Cutter Thread	M6x1
Shaft	Threaded
Shaft Diameter	1/4 in
Cutter Capacity	15 mm
Skirt	Slotted Straight Cutaway
Skirt Description	20.57 mm OD 16.76 mm ID 15 mm Cutter Capacity
Anti Rotation Pin	Included
Solid Stop	Yes
Material	Stainless Steel
Country of Origin	USA

ADDITIONAL IMAGES AND DRAWINGS



Code	Shaft Option
-S	Round
-QC	Quick Change
-TS	1/4-28in Threaded Shank

Code	Foot Style
N	Nylon

Code	Cutter Thread
[Blank]	1/4-28
6	M6x1

Incremental Adjustment: 0.001 in
Shaft Travel: 1/8 in
Cutter Thread: 1/4-28
Material: Stainless Steel

Bearing Rating: 10,000 rpm
Bearing Type: Dual Ball-Bearings
Dust Seal: Integrated Dust Seal
Heavy Duty Thrust Bearing: Yes
Solid Stop: Yes



2in Ref.

Ø.81in

Threaded Shank
Shaft



Round
Shaft



Quick Change
Shaft



(Anti Rotation
Pin)

(Skirt Option)

Threaded Shank
Shaft with
Anti Rotation Pin

*For Skirt options see next page and website.



WESCON

Do not modify, copy, distribute, or reproduce this drawing without prior written authorization.

All dimensions are in inches

© 2025 Wescon Industries Inc.
601 Century Plaza Dr. Houston, TX 77073, US
www.wesconusa.com

Information in this drawing is provided for reference only

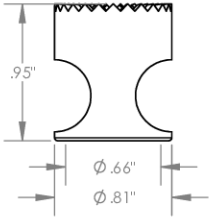
Part Number

WES297

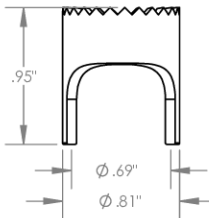
Wescon 297 Microstop

Image 1

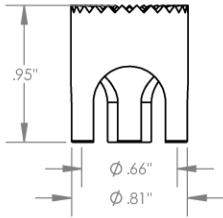
Skirt Option



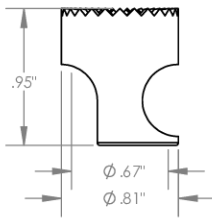
S
Straight
Cutter $\phi 5/8$ "



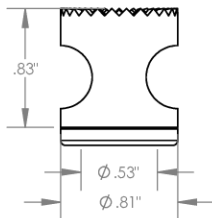
S2L
2-Leg
Cutter $\phi 5/8$ "



S3L
3-Leg
Cutter $\phi 5/8$ "



SCA
Straight Cutaway
Cutter $\phi 5/8$ "

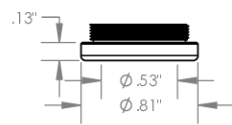


I
Internal Thread
Cutter $\phi 1/2$ "
Choose Foot Style From Table

		Part Number	WES297
© 2025 Wescon Industries Inc. 601 Century Plaza Dr. Houston, TX 77073, US www.wesconusa.com		Wescon 297 Microstop	
Information in this drawing is provided for reference only			

Image 2

Foot Style For Internal Thread



Part Number	Material
59620-N	Nylon
59620-S	Steel
59620-P	Phenolic

Do not modify, copy, distribute, or reproduce this drawing without prior written authorization. All dimensions are in inches	 WESCON	Part Number WES297
	© 2025 Wescon Industries Inc. 601 Century Plaza Dr. Houston, TX 77073, US www.wesconusa.com Information in this drawing is provided for reference only	Wescon 297 Microstop

Image 3