

## DATASHEET

PART NUMBER

# WES297-S-QC

**Wescon 297 Stainless Steel Microstop - 1/4-28  
 - 5/8" Cutter Capacity - Straight Skirt**

CLOSE QUARTERS USE STAINLESS STEEL

WEBSITE

<https://www.wesconusa.com/products/WES297-S-QC>


\* The image represents the general look of the series. Actual product may vary based on options selected.

## SPECIFICATIONS

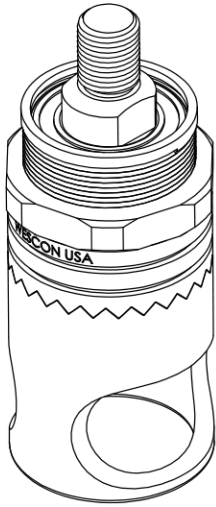
<b>Measurement Type</b>	Imperial
<b>Bearing Rating</b>	10,000 rpm
<b>Bearing Type</b>	Dual Ball Bearings
<b>Heavy Duty Thrust Bearing</b>	No
<b>Incremental Adjustment</b>	0.001 in
<b>Shaft Travel</b>	1/8 in
<b>Cutter Thread</b>	1/4-28
<b>Shaft</b>	Quick Change
<b>Shaft Diameter</b>	1/4 in
<b>Cutter Capacity</b>	5/8 in
<b>Skirt</b>	Straight
<b>Solid Stop</b>	Yes
<b>Material</b>	Stainless Steel
<b>Country of Origin</b>	USA

ADDITIONAL IMAGES AND DRAWINGS



Image 0

### WES297 Series Microstop



**Part Number**  
WES297-X-XX-XX-AR

- Anti Rotation Pin (If Included)
- Shaft Option
- Foot Style
- Skirt Option\*
- Cutter Thread

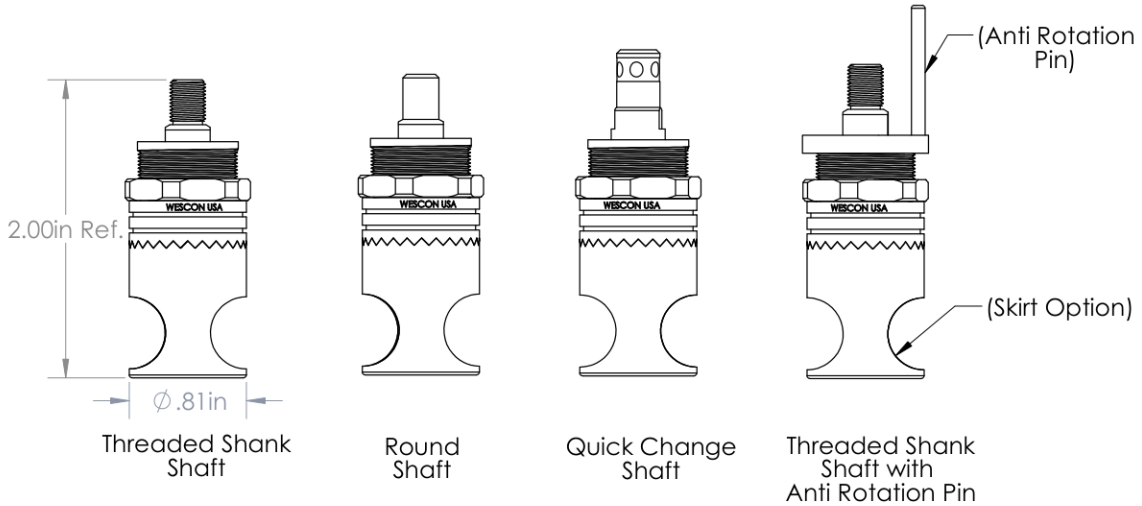
Code	Cutter Thread
(Blank)	1/4-28
6	M6x1

Code	Foot Style
N	Nylon

Code	Shaft Option
S	Round
QC	Quick Change
TS	1/4-28in Threaded Shank

Incremental Adjustment: 0.001 in  
Shaft Travel: 1/8 in  
Material: Stainless Steel

Bearing Rating: 10,000 rpm  
Bearing Type: Dual Ball-Bearings  
Dust Seal: Integrated Dust Seal  
Heavy Duty Thrust Bearing: No  
Solid Stop: Yes



\*For Skirt options see next page and website.



Part Number

**WES297**

Do not modify, copy, distribute, or reproduce this drawing without prior written authorization.

© 2025 Wescon Industries Inc.  
601 Century Plaza Dr. Houston, TX 77073, US  
www.wesconusa.com

Wescon 297 Microstop

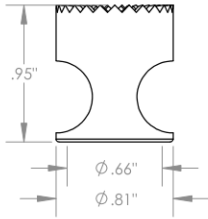
Revision 02

All dimensions are in inches

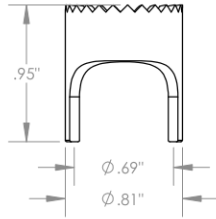
Information in this drawing is provided for reference only

Image 1

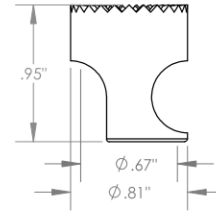
### Skirt Option



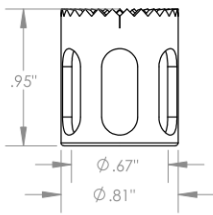
**S**  
Straight  
Cutter  $\phi 5/8"$  ( $\phi 16\text{mm}$ )



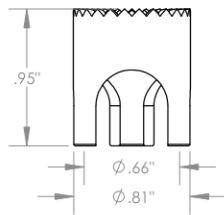
**S2L**  
2-Leg  
Cutter  $\phi 5/8"$  ( $\phi 16\text{mm}$ )



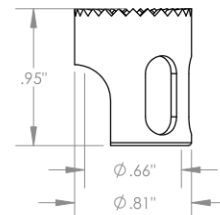
**SCA**  
Straight Cutaway  
Cutter  $\phi 5/8"$  ( $\phi 16\text{mm}$ )



**SL**  
Slotted  
Cutter  $\phi 5/8"$  ( $\phi 16\text{mm}$ )

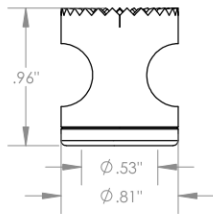


**S3L**  
3-Leg  
Cutter  $\phi 5/8"$  ( $\phi 16\text{mm}$ )

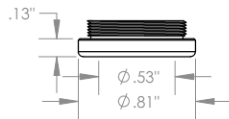


**SSCA**  
Slotted Straight Cutaway  
Cutter  $\phi 5/8"$  ( $\phi 16\text{mm}$ )

### Foot Style For Internal Thread



**I**  
Internal Thread  
Cutter  $\phi 1/2"$  ( $\phi 12\text{mm}$ )  
Choose Foot Style From Table



Part Number	Material
29620-N	Nylon
29620-S	Steel
29620-P	Phenolic



Part Number

**WES297**

Do not modify, copy, distribute, or reproduce this drawing without prior written authorization.

© 2025 Wescon Industries Inc.  
601 Century Plaza Dr. Houston, TX 77073, US  
www.wesconusa.com

Wescon 297 Microstop

Revision 02

All dimensions are in Inches

Information in this drawing is provided for reference only

Image 2