

## DATASHEET

PART NUMBER

### WES297-SL-TS-AR

**Wescon 297 Stainless Steel Microstop - 1/4-28  
- 5/8" Cutter Capacity - Slotted Skirt**

CLOSE QUARTERS USE STAINLESS STEEL

WEBSITE

<https://www.wesconusa.com/products/WES297-SL-TS-AR>



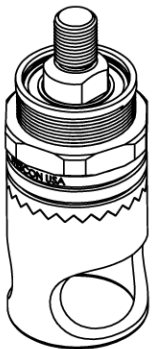
\* The image represents the general look of the series. Actual product may vary based on options selected.

## SPECIFICATIONS

Measurement Type	Imperial
Bearing Rating	10,000 rpm
Bearing Type	Dual Ball Bearings
Heavy Duty Thrust Bearing	No
Incremental Adjustment	0.001 in
Shaft Travel	1/8 in
Cutter Thread	1/4-28
Shaft	Threaded
Shaft Diameter	1/4 in
Cutter Capacity	5/8 in
Skirt	Slotted
Skirt Description	0.81 in OD 0.66 in ID 5/8 in Cutter Capacity
Anti Rotation Pin	Included
Solid Stop	Yes
Material	Stainless Steel
Country of Origin	USA

## ADDITIONAL IMAGES AND DRAWINGS

### WES297 SERIES MICROSTOP



**Part Number**  
WES297-X-XX-XX-AR

- └── Anti Rotation Pin (If Included)
- └── Shaft Option
- └── Foot Style
- └── Skirt Option\*
- └── Cutter Thread

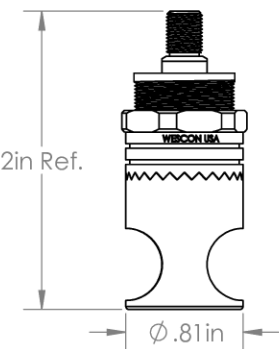
Code	Shaft Option
-S	Round
-QC	Quick Change
-TS	1/4-28in Threaded Shank

Code	Foot Style
N	Nylon


Code	Cutter Thread
(Blank)	1/4-28
6	M6x1

Incremental Adjustment: 0.001 in  
 Shaft Travel: 1/8 in  
 Cutter Thread: 1/4-28  
 Material: Stainless Steel


Bearing Rating: 10,000 rpm  
 Bearing Type: Dual Ball-Bearings  
 Dust Seal: Integrated Dust Seal  
 Heavy Duty Thrust Bearing: Yes  
 Solid Stop: Yes



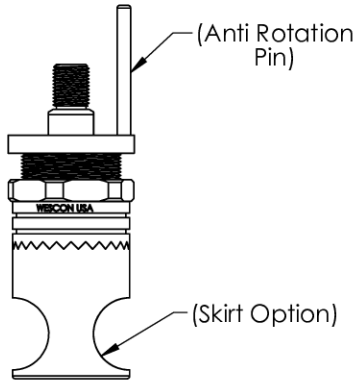
Threaded Shank Shaft



Round Shaft




Quick Change Shaft



Threaded Shank Shaft with Anti Rotation Pin

\*For Skirt options see next page and website.



Part Number **WES297**

Do not modify, copy, distribute, or reproduce this drawing without prior written authorization.

All dimensions are in Inches

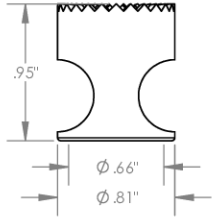
© 2025 Wescon Industries Inc.  
 601 Century Plaza Dr. Houston, TX 77073, US  
 www.wesconusa.com

Information in this drawing is provided for reference only

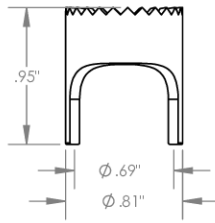
**Wescon 297 Microstop**

Image 1

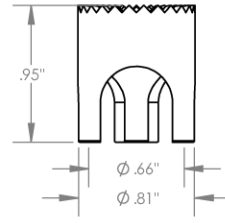
### Skirt Option



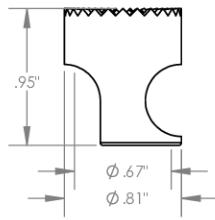
**S**  
Straight  
Cutter  $\phi 5/8$ "



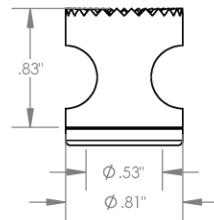
**S2L**  
2-Leg  
Cutter  $\phi 5/8$ "



**S3L**  
3-Leg  
Cutter  $\phi 5/8$ "



**SCA**  
Straight Cutaway  
Cutter  $\phi 5/8$ "



**I**  
Internal Thread  
Cutter  $\phi 1/2$ "  
Choose Foot Style From Table



Part Number

**WES297**

Do not modify, copy, distribute, or reproduce this drawing without prior written authorization.

© 2025 Wescon Industries Inc.  
601 Century Plaza Dr. Houston, TX 77073, US  
www.wesconusa.com

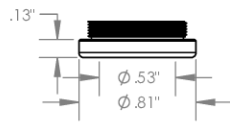
Wescon 297 Microstop

All dimensions are in inches

Information in this drawing is provided for reference only

Image 2

### Foot Style For Internal Thread



Part Number	Material
59620-N	Nylon
59620-S	Steel
59620-P	Phenolic



Part Number

**WES297**

Do not modify, copy, distribute, or reproduce this drawing without prior written authorization.

© 2025 Wescon Industries Inc.  
601 Century Plaza Dr. Houston, TX 77073, US  
www.wesconusa.com

Wescon 297 Microstop

All dimensions are in inches

Information in this drawing is provided for reference only

Image 3