

## DATASHEET

### PART NUMBER

## WES396-6-SCA

### Wescon 396 Microstop - M6x1 - 12 mm Cutter Capacity - Straight Cutaway Skirt

SMALL CAPACITY / TIGHT SPACE APPLICATIONS

### WEBSITE

<https://www.wesconusa.com/products/WES396-6-SCA>



\* The image represents the general look of the series. Actual product may vary based on options selected.

## SPECIFICATIONS

Measurement Type	Metric
Bearing Rating	10,000 rpm
Bearing Type	Dual Ball Bearings
Heavy Duty Thrust Bearing	No
Incremental Adjustment	0.0005 in
Shaft Travel	1/8 in
Cutter Thread	M6x1
Shaft	Round
Shaft Diameter	1/4 in
Cutter Capacity	12 mm
Skirt	Straight Cutaway
Solid Stop	Yes
Material	Steel
Country of Origin	USA

ADDITIONAL IMAGES AND DRAWINGS

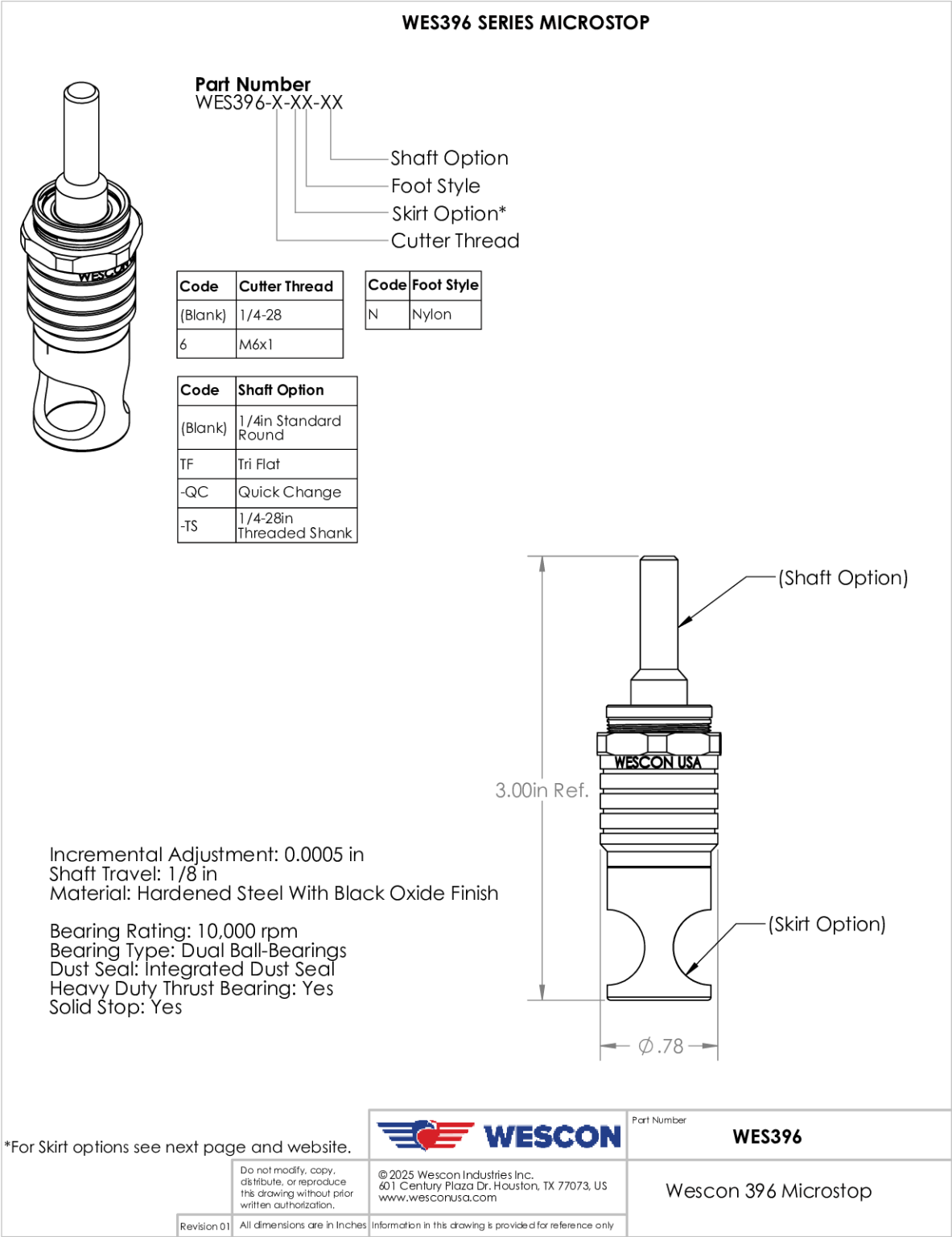
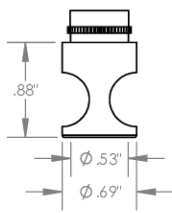
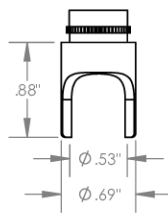


Image 1

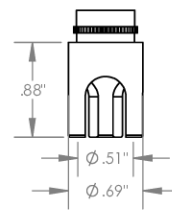
### Skirt Option



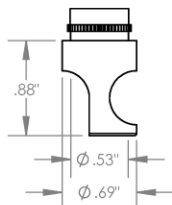
**S**  
Straight  
Cutter  $\Phi 1/2"$  ( $\Phi 12\text{mm}$ )



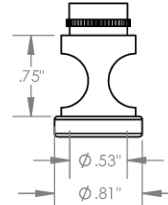
**S2L**  
2-Leg  
Cutter  $\Phi 1/2"$  ( $\Phi 12\text{mm}$ )



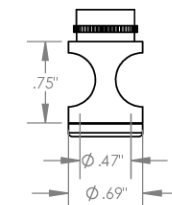
**S3L**  
3-Leg  
Cutter  $\Phi 1/2"$  ( $\Phi 12\text{mm}$ )



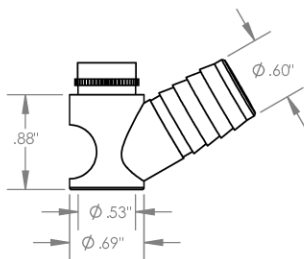
**SCA**  
Straight Cutaway  
Cutter  $\Phi 1/2"$  ( $\Phi 12\text{mm}$ )



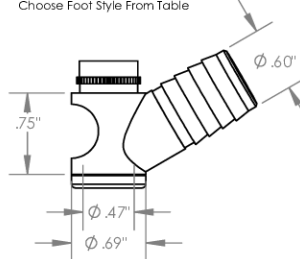
**E**  
External Thread  
Cutter  $\Phi 1/2"$  ( $\Phi 12\text{mm}$ )  
Choose Foot Style From Table



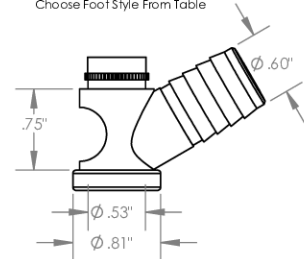
**I**  
Internal Thread  
Cutter  $\Phi 7/16"$  ( $\Phi 11\text{mm}$ )  
Choose Foot Style From Table



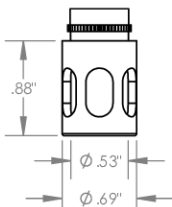
**VS**  
Vacuum Straight  
Cutter  $\Phi 1/2"$  ( $\Phi 12\text{mm}$ )



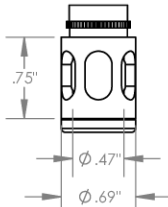
**VI**  
Vacuum Internal Thread  
Cutter  $\Phi 7/16"$  ( $\Phi 11\text{mm}$ )  
Choose Foot Style From Table



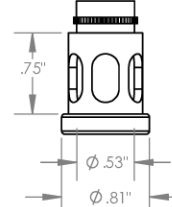
**VE**  
Vacuum External Thread  
Cutter  $\Phi 1/2"$  ( $\Phi 12\text{mm}$ )  
Choose Foot Style From Table



**SL**  
Slotted  
Cutter  $\Phi 1/2"$  ( $\Phi 12\text{mm}$ )



**SI**  
Slotted Internal Thread  
Cutter  $\Phi 7/16"$  ( $\Phi 11\text{mm}$ )  
Choose Foot Style From Table



**SE**  
Slotted External Thread  
Cutter  $\Phi 1/2"$  ( $\Phi 12\text{mm}$ )  
Choose Foot Style From Table



Part Number

**WES396**

Do not modify, copy, distribute, or reproduce this drawing without prior written authorization.

© 2025 Wescon Industries Inc.  
601 Century Plaza Dr. Houston, TX 77073, US  
www.wesconusa.com

Wescon 396 Microstop

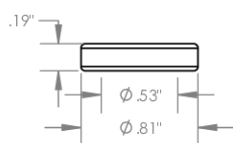
Revision 01

All dimensions are in inches

Information in this drawing is provided for reference only

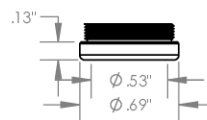
Image 2

**Foot Style  
For External Thread**



Part Number	Material
39631-N	Nylon
39631-S	Steel
39631-P	Phenolic

**Foot Style  
For Internal Thread**



Part Number	Material
39620-N	Nylon
39620-S	Steel
39620-P	Phenolic

		Part Number	<b>WES396</b>
		Wescon 396 Microstop	
Revision 01	Do not modify, copy, distribute, or reproduce this drawing without prior written authorization.	© 2025 Wescon Industries Inc. 601 Century Plaza Dr. Houston, TX 77073, US www.wesconusa.com	
All dimensions are in inches		Information in this drawing is provided for reference only	

Image 3