

DATASHEET

PART NUMBER

WES396-6-SIN-TS

Wescon 396 Microstop - M6x1 - 11 mm Cutter Capacity - Slotted Skirt Internal Nylon Foot

SMALL CAPACITY / TIGHT SPACE APPLICATIONS

WEBSITE

<https://www.wesconusa.com/products/WES396-6-SIN-TS>



* The image represents the general look of the series. Actual product may vary based on options selected.

SPECIFICATIONS

Measurement Type	Metric
Bearing Rating	10,000 rpm
Bearing Type	Dual Ball Bearings
Heavy Duty Thrust Bearing	No
Incremental Adjustment	0.0005 in
Shaft Travel	4 mm
Cutter Thread	M6x1
Shaft	Threaded Shank (1/4-28)
Shaft Diameter	1/4 in
Cutter Capacity	11 mm
Skirt	Slotted Internal Thread
Skirt Description	11 mm Cutter Capacity
Foot	Nylon
Solid Stop	Yes
Material	Steel
Stroke Length	0.157 in (4mm) Shaft Travel
Country of Origin	USA

ADDITIONAL IMAGES AND DRAWINGS



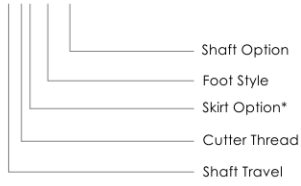
Image 0

WES396 Series Microstop



Part Number

WES396-X-XX-XX-XX



Code	Shaft Travel
(Blank)	0.157in
ES	0.246in

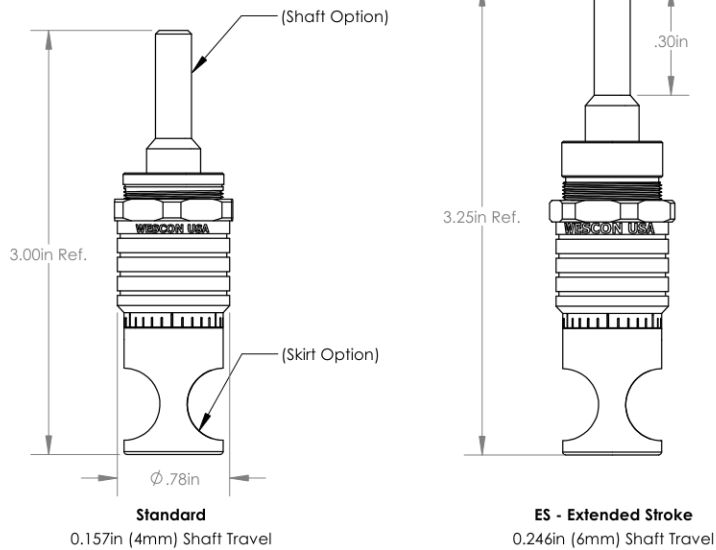
Code	Cutter Thread
(Blank)	1/4-28
6	M6x1

Code	Foot Style
N	Nylon

Code	Shaft Option
(Blank)	1/4in Standard Round
TF	Tri Flat
QC	Quick Change
TS	1/4-28in Threaded Shank

Incremental Adjustment: 0.0005 in
 Material: Carbon Steel Body With Hardened Tool Steel Shaft

Bearing Rating: 10,000 rpm
 Bearing Type: Dual Ball-Bearings
 Dust Seal: Integrated Dust Seal
 Heavy Duty Thrust Bearing: No
 Solid Stop: Yes



*For Skirt options see next page and website.



Part Number

WES396

Do not modify, copy, distribute, or reproduce this drawing without prior written authorization.

© 2025 Wescon Industries Inc.
 601 Century Plaza Dr. Houston, TX 77073, US
 www.wesconusa.com

Wescon 396 Microstop

Revision 09

All dimensions are in Inches

Information in this drawing is provided for reference only

Image 1

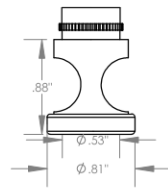
Skirt Option



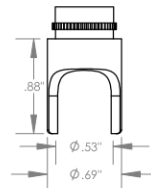
S
Straight
Cutter Ø1/2" (Ø12mm)



I
Internal Thread*
Cutter Ø7/16" (Ø11mm)



E
External Thread*
Cutter Ø1/2" (Ø12mm)



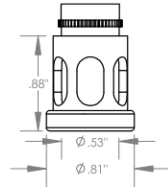
S2L
2-Leg
Cutter Ø1/2" (Ø12mm)



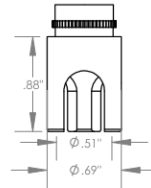
SL
Slotted
Cutter Ø1/2" (Ø12mm)



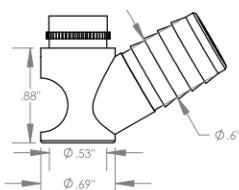
SI
Slotted Internal Thread*
Cutter Ø7/16" (Ø11mm)



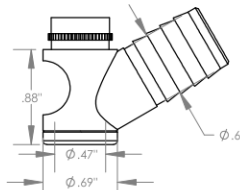
SE
Slotted External Thread*
Cutter Ø1/2" (Ø12mm)



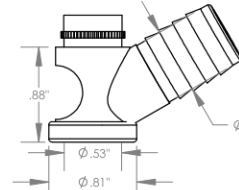
S3L
3-Leg
Cutter Ø1/2" (Ø12mm)



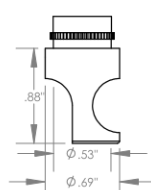
WVS
Vacuum Straight
Cutter Ø1/2" (Ø12mm)



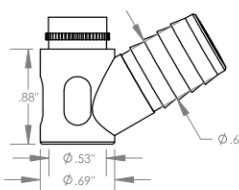
WVI
Vacuum Internal Thread*
Cutter Ø7/16" (Ø11mm)



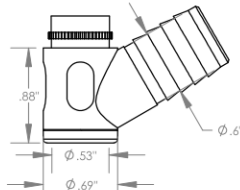
WVE
Vacuum External Thread*
Cutter Ø1/2" (Ø12mm)



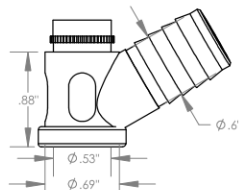
SCA
Straight Cutaway
Cutter Ø1/2" (Ø12mm)



SVS
Slotted Vacuum Straight
Cutter Ø1/2" (Ø12mm)



SVI
Slotted Vacuum Internal Thread*
Cutter Ø7/16" (Ø11mm)



SVE
Slotted Vacuum External Thread*
Cutter Ø1/2" (Ø12mm)

*Select foot style from table

Revision 09

Do not modify, copy, distribute, or reproduce this drawing without prior written authorization.

All dimensions are in inches



© 2025 Wescon Industries Inc.
601 Century Plaza Dr. Houston, TX 77073, US
www.wesconusa.com

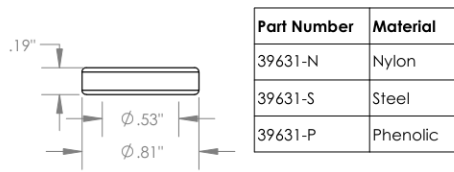
Information in this drawing is provided for reference only

Part Number

WES396

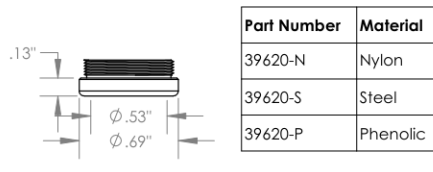
Wescon 396 Microstop

Image 2



Part Number	Material
39631-N	Nylon
39631-S	Steel
39631-P	Phenolic

Foot Style For External Thread



Part Number	Material
39620-N	Nylon
39620-S	Steel
39620-P	Phenolic

Foot Style For Internal Thread



Part Number

WES396

Do not modify, copy, distribute, or reproduce this drawing without prior written authorization.

© 2025 Wescon Industries Inc.
601 Century Plaza Dr. Houston, TX 77073, US
www.wesconusa.com

Wescon 396 Microstop

Revision 09

All dimensions are in inches

Information in this drawing is provided for reference only

Image 3