

## DATASHEET

PART NUMBER

**WES396-ES-IN**

**Wescon 396 Microstop - 1/4-28 - 7/16" Cutter  
Capacity - Internal Nylon Foot**

SMALL CAPACITY / TIGHT SPACE / EXTENDED  
STROKE

WEBSITE

<https://www.wesconusa.com/products/WES396-ES-IN>



\* The image represents the general look of the series. Actual product may vary based on options selected.

## SPECIFICATIONS

|                                  |                             |
|----------------------------------|-----------------------------|
| <b>Measurement Type</b>          | Imperial                    |
| <b>Bearing Rating</b>            | 10,000 rpm                  |
| <b>Bearing Type</b>              | Dual Ball Bearings          |
| <b>Heavy Duty Thrust Bearing</b> | No                          |
| <b>Incremental Adjustment</b>    | 0.0005 in                   |
| <b>Shaft Travel</b>              | 0.25 in                     |
| <b>Cutter Thread</b>             | 1/4-28                      |
| <b>Shaft</b>                     | Round                       |
| <b>Shaft Diameter</b>            | 1/4 in                      |
| <b>Cutter Capacity</b>           | 7/16 in                     |
| <b>Skirt</b>                     | Internal Thread             |
| <b>Skirt Description</b>         | 7/16 in Cutter Capacity     |
| <b>Foot</b>                      | Nylon                       |
| <b>Solid Stop</b>                | Yes                         |
| <b>Material</b>                  | Steel                       |
| <b>Stroke Length</b>             | 0.236 in (6mm) Shaft Travel |
| <b>Country of Origin</b>         | USA                         |

## ADDITIONAL IMAGES AND DRAWINGS

### WES396 Series Microstop



**Part Number**  
WES396-X-XX-XX-XX

- \_\_\_\_\_ Shaft Option
- \_\_\_\_\_ Foot Style
- \_\_\_\_\_ Skirt Option\*
- \_\_\_\_\_ Cutter Thread
- \_\_\_\_\_ Shaft Travel

| Code    | Shaft Travel |
|---------|--------------|
| (Blank) | 0.157in      |
| ES      | 0.246in      |

| Code    | Cutter Thread |
|---------|---------------|
| (Blank) | 1/4-28        |
| 6       | M6x1          |

| Code | Foot Style |
|------|------------|
| N    | Nylon      |

| Code    | Shaft Option            |
|---------|-------------------------|
| (Blank) | 1/4in Standard Round    |
| TF      | Tri Flat                |
| QC      | Quick Change            |
| TS      | 1/4-28in Threaded Shank |

Incremental Adjustment: 0.0005 in  
Material: Carbon Steel Body With Hardened Tool Steel Shaft

Bearing Rating: 10,000 rpm  
Bearing Type: Dual Ball-Bearings  
Dust Seal: Integrated Dust Seal  
Heavy Duty Thrust Bearing: No  
Solid Stop: Yes



**Standard**  
0.157in (4mm) Shaft Travel



**ES - Extended Stroke**  
0.246in (6mm) Shaft Travel

\*For Skirt options see next page and website.



Part Number  
**WES396**

Revision 09

Do not modify, copy, distribute, or reproduce this drawing without prior written authorization.

© 2025 Wescon Industries Inc.  
601 Century Plaza Dr. Houston, TX 77073. US  
www.wesconusa.com

Information in this drawing is provided for reference only

**Wescon 396 Microstop**

Image 1

### Skirt Option



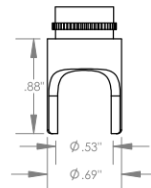
**S**  
Straight  
Cutter Ø1/2" (Ø12mm)



**I**  
Internal Thread\*  
Cutter Ø7/16" (Ø11mm)



**E**  
External Thread\*  
Cutter Ø1/2" (Ø12mm)



**S2L**  
2-Leg  
Cutter Ø1/2" (Ø12mm)



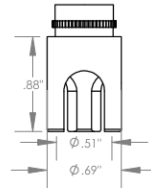
**SL**  
Slotted  
Cutter Ø1/2" (Ø12mm)



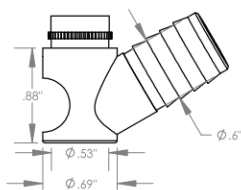
**SI**  
Slotted Internal Thread\*  
Cutter Ø7/16" (Ø11mm)



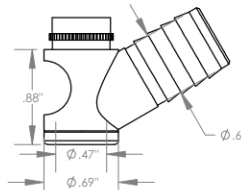
**SE**  
Slotted External Thread\*  
Cutter Ø1/2" (Ø12mm)



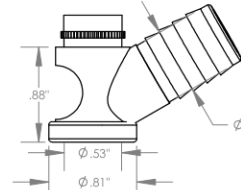
**S3L**  
3-Leg  
Cutter Ø1/2" (Ø12mm)



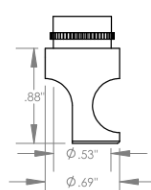
**WVS**  
Vacuum Straight  
Cutter Ø1/2" (Ø12mm)



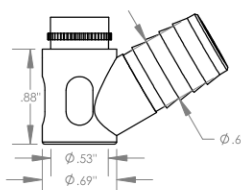
**WVI**  
Vacuum Internal Thread\*  
Cutter Ø7/16" (Ø11mm)



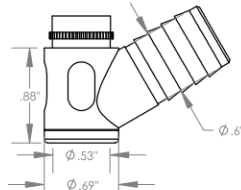
**WVE**  
Vacuum External Thread\*  
Cutter Ø1/2" (Ø12mm)



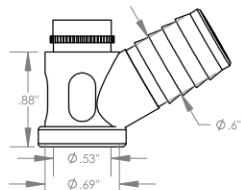
**SCA**  
Straight Cutaway  
Cutter Ø1/2" (Ø12mm)



**SVS**  
Slotted Vacuum Straight  
Cutter Ø1/2" (Ø12mm)



**SVI**  
Slotted Vacuum Internal Thread\*  
Cutter Ø7/16" (Ø11mm)



**SVE**  
Slotted Vacuum External Thread\*  
Cutter Ø1/2" (Ø12mm)

\*Select foot style from table

Revision 09

Do not modify, copy, distribute, or reproduce this drawing without prior written authorization.

All dimensions are in inches



© 2025 Wescon Industries Inc.  
601 Century Plaza Dr. Houston, TX 77073, US  
www.wesconusa.com

Information in this drawing is provided for reference only

Part Number

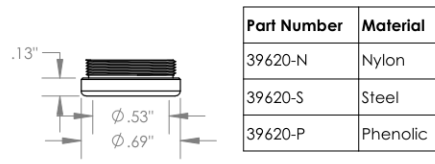
**WES396**

Wescon 396 Microstop

Image 2



Foot Style For External Thread



Foot Style For Internal Thread



Part Number

**WES396**

Do not modify, copy, distribute, or reproduce this drawing without prior written authorization.

© 2025 Wescon Industries Inc.  
601 Century Plaza Dr. Houston, TX 77073, US  
www.wesconusa.com

Wescon 396 Microstop

Revision 09

All dimensions are in inches

Information in this drawing is provided for reference only

Image 3