

## DATASHEET

PART NUMBER

# WES396-ES-WVS

**Wescon 396 Microstop - 1/4-28 - 1/2" Cutter  
Capacity - Vacuum Straight Skirt**

SMALL CAPACITY / TIGHT SPACE / EXTENDED  
STROKE

WEBSITE

<https://www.wesconusa.com/products/WES396-ES-WVS>



\* The image represents the general look of the series. Actual product may vary based on options selected.

## SPECIFICATIONS

|                                  |                                              |
|----------------------------------|----------------------------------------------|
| <b>Measurement Type</b>          | Imperial                                     |
| <b>Bearing Rating</b>            | 10,000 rpm                                   |
| <b>Bearing Type</b>              | Dual Ball Bearings                           |
| <b>Heavy Duty Thrust Bearing</b> | No                                           |
| <b>Incremental Adjustment</b>    | 0.0005 in                                    |
| <b>Shaft Travel</b>              | 0.25 in                                      |
| <b>Cutter Thread</b>             | 1/4-28                                       |
| <b>Shaft</b>                     | Round                                        |
| <b>Shaft Diameter</b>            | 1/4 in                                       |
| <b>Cutter Capacity</b>           | 1/2 in                                       |
| <b>Skirt</b>                     | Vacuum Straight                              |
| <b>Skirt Description</b>         | 0.69 in OD 0.53 in ID 1/2 in Cutter Capacity |
| <b>Solid Stop</b>                | Yes                                          |
| <b>Material</b>                  | Steel                                        |
| <b>Stroke Length</b>             | 0.236 in (6mm) Shaft Travel                  |
| <b>Country of Origin</b>         | USA                                          |

**ADDITIONAL IMAGES AND DRAWINGS**

**WES396 Series Microstop**



**Part Number**  
WES396-X-XX-XX-XX

- Shaft Option
- Foot Style
- Skirt Option\*
- Cutter Thread
- Shaft Travel

| Code    | Shaft Travel |
|---------|--------------|
| (Blank) | 0.157in      |
| ES      | 0.246in      |

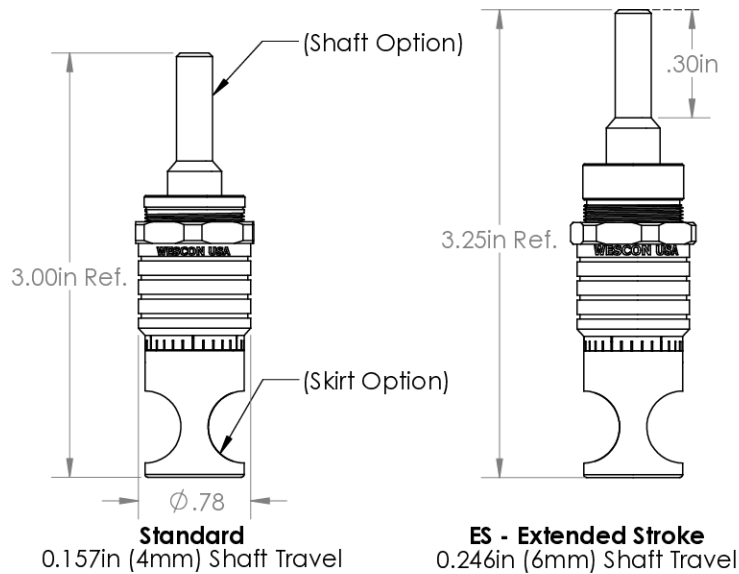
| Code    | Cutter Thread |
|---------|---------------|
| (Blank) | 1/4-28        |
| 6       | M6x1          |

| Code | Foot Style |
|------|------------|
| N    | Nylon      |

| Code    | Shaft Option            |
|---------|-------------------------|
| (Blank) | 1/4in Standard Round    |
| TF      | Tri Flat                |
| QC      | Quick Change            |
| TS      | 1/4-28in Threaded Shank |

Incremental Adjustment: 0.0005 in  
Material: Stainless Steel

Bearing Rating: 10,000 rpm  
Bearing Type: Dual Ball-Bearings  
Dust Seal: Integrated Dust Seal  
Heavy Duty Thrust Bearing: No  
Solid Stop: Yes



\*For Skirt options see next page and website.



Part Number

**WES396**

Do not modify, copy, distribute, or reproduce this drawing without prior written authorization.

© 2025 Wescon Industries Inc.  
601 Century Plaza Dr. Houston, TX 77073, US  
www.wesconusa.com

Wescon 396 Microstop

Revision 05

All dimensions are in inches

Information in this drawing is provided for reference only

Image 1

**Foot Style  
For External Thread**



| Part Number | Material |
|-------------|----------|
| 39631-N     | Nylon    |
| 39631-S     | Steel    |
| 39631-P     | Phenolic |

**Foot Style  
For Internal Thread**



| Part Number | Material |
|-------------|----------|
| 39620-N     | Nylon    |
| 39620-S     | Steel    |
| 39620-P     | Phenolic |



|             |               |
|-------------|---------------|
| Part Number | <b>WES396</b> |
|-------------|---------------|

Do not modify, copy, distribute, or reproduce this drawing without prior written authorization.

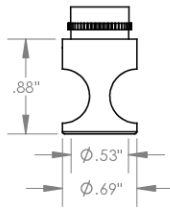
© 2025 Wescon Industries Inc.  
601 Century Plaza Dr. Houston, TX 77073, US  
www.wesconusa.com

Wescon 396 Microstop

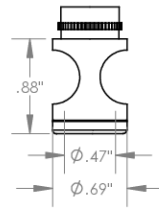
|             |                              |                                                            |
|-------------|------------------------------|------------------------------------------------------------|
| Revision 05 | All dimensions are in inches | Information in this drawing is provided for reference only |
|-------------|------------------------------|------------------------------------------------------------|

Image 2

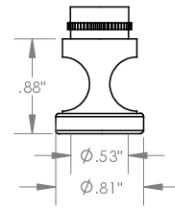
**Skirt Option**



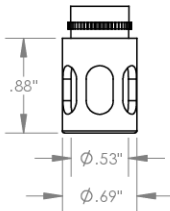
**S**  
Straight  
Cutter  $\phi 1/2''$  ( $\phi 12\text{mm}$ )



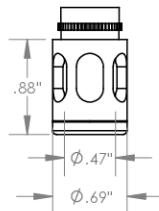
**I**  
Internal Thread  
Cutter  $\phi 7/16''$  ( $\phi 11\text{mm}$ )  
Choose Foot Style From Table



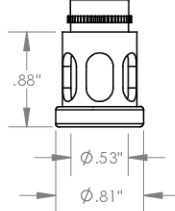
**E**  
External Thread  
Cutter  $\phi 1/2''$  ( $\phi 12\text{mm}$ )  
Choose Foot Style From Table



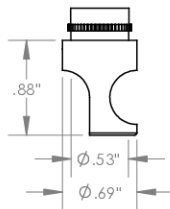
**SL**  
Slotted  
Cutter  $\phi 1/2''$  ( $\phi 12\text{mm}$ )



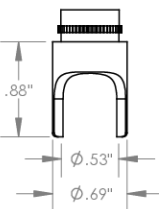
**SI**  
Slotted Internal Thread  
Cutter  $\phi 7/16''$  ( $\phi 11\text{mm}$ )  
Choose Foot Style From Table



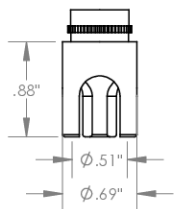
**SE**  
Slotted External Thread  
Cutter  $\phi 1/2''$  ( $\phi 12\text{mm}$ )  
Choose Foot Style From Table



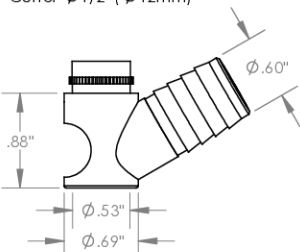
**SCA**  
Straight Cutaway  
Cutter  $\phi 1/2''$  ( $\phi 12\text{mm}$ )



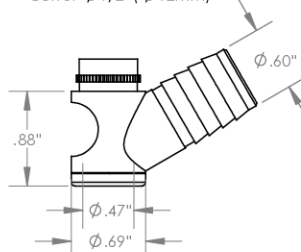
**S2L**  
2-Leg  
Cutter  $\phi 1/2''$  ( $\phi 12\text{mm}$ )



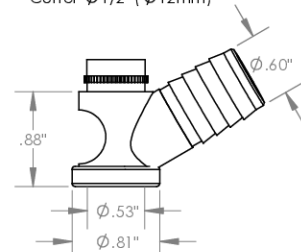
**S3L**  
3-Leg  
Cutter  $\phi 1/2''$  ( $\phi 12\text{mm}$ )



**VS**  
Vacuum Straight  
Cutter  $\phi 1/2''$  ( $\phi 12\text{mm}$ )



**VI**  
Vacuum Internal Thread  
Cutter  $\phi 7/16''$  ( $\phi 11\text{mm}$ )  
Choose Foot Style From Table



**VE**  
Vacuum External Thread  
Cutter  $\phi 1/2''$  ( $\phi 12\text{mm}$ )  
Choose Foot Style From Table



Part Number

**WES396**

Do not modify, copy, distribute, or reproduce this drawing without prior written authorization.

© 2025 Wescon Industries Inc.  
601 Century Plaza Dr. Houston, TX 77073, US  
www.wesconusa.com

Wescon 396 Microstop

Revision 05

All dimensions are in inches

Information in this drawing is provided for reference only

Image 3