

DATASHEET

PART NUMBER

WES397-ES-6-WVEN-TS

**Wescon 397 Stainless Steel Microstop - M6x1 -
12.7 mm Cutter Capacity - Vacuum External
Thread Skirt - Nylon Foot**

SMALL CAPACITY / TIGHT SPACE / EXTENDED
STROKE STAINLESS STEEL

WEBSITE

<https://www.wesconusa.com/products/WES397-ES-6-WVEN-TS>



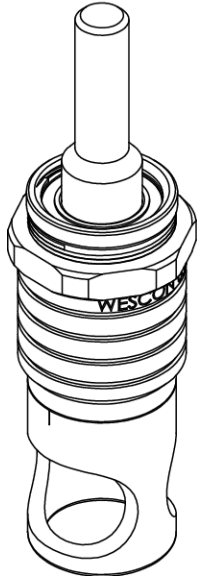
* The image represents the general look of the series. Actual product may vary based on options selected.

SPECIFICATIONS

| | |
|----------------------------------|---|
| Measurement Type | Metric |
| Bearing Rating | 10,000 rpm |
| Bearing Type | Dual Ball Bearings |
| Heavy Duty Thrust Bearing | No |
| Incremental Adjustment | 0.0005 in |
| Shaft Travel | 6 mm |
| Cutter Thread | M6x1 |
| Shaft | Threaded Shank (1/4-28) |
| Shaft Diameter | 1/4 in |
| Cutter Capacity | 12.7 mm |
| Skirt | Vacuum External Thread |
| Skirt Description | 20.57 mm OD 13.46 mm ID 12.7 mm Cutter Capacity |
| Foot | Nylon |
| Solid Stop | Yes |
| Material | Stainless Steel |
| Stroke Length | 0.236 in (6mm) Shaft Travel |
| Country of Origin | USA |

ADDITIONAL IMAGES AND DRAWINGS

WES397 Series Microstop



Part Number
WES397-X-XX-XX-XX

- Shaft Option
- Foot Style
- Skirt Option*
- Cutter Thread
- Shaft Travel

| Code | Shaft Travel |
|---------|--------------|
| (Blank) | 0.157in |
| ES | 0.246in |

| Code | Cutter Thread |
|---------|---------------|
| (Blank) | 1/4-28 |
| 6 | M6x1 |

| Code | Foot Style |
|------|------------|
| N | Nylon |

| Code | Shaft Option |
|---------|-------------------------|
| (Blank) | 1/4in Standard Round |
| TF | Tri Flat |
| QC | Quick Change |
| TS | 1/4-28in Threaded Shank |

Incremental Adjustment: 0.0005 in
Material: Stainless Steel

Bearing Rating: 10,000 rpm
Bearing Type: Dual Ball-Bearings
Dust Seal: Integrated Dust Seal
Heavy Duty Thrust Bearing: No
Solid Stop: Yes



*For Skirt options see next page and website.



Part Number

WES397

Do not modify, copy, distribute, or reproduce this drawing without prior written authorization.

© 2025 Wescon Industries Inc.
601 Century Plaza Dr. Houston, TX 77073, US
www.wesconusa.com

Wescon 397 Microstop

Revision 03

All dimensions are in inches

Information in this drawing is provided for reference only

Image 1

Skirt Option



S
Straight
Cutter $\frac{1}{2}$ " (\varnothing 12mm)



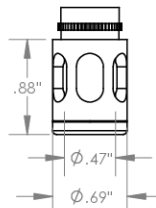
I
Internal Thread
Cutter $\frac{7}{16}$ " (\varnothing 11mm)
Choose Foot Style From Table



E
External Thread
Cutter $\frac{1}{2}$ " (\varnothing 12mm)
Choose Foot Style From Table



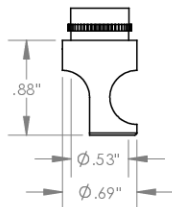
SL
Slotted
Cutter $\frac{1}{2}$ " (\varnothing 12mm)



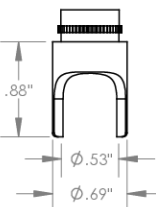
SI
Slotted Internal Thread
Cutter $\frac{7}{16}$ " (\varnothing 11mm)
Choose Foot Style From Table



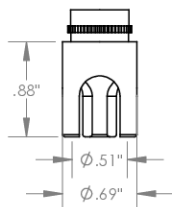
SE
Slotted External Thread
Cutter $\frac{1}{2}$ " (\varnothing 12mm)
Choose Foot Style From Table



SCA
Straight Cutaway
Cutter $\frac{1}{2}$ " (\varnothing 12mm)



S2L
2-Leg
Cutter $\frac{1}{2}$ " (\varnothing 12mm)



S3L
3-Leg
Cutter $\frac{1}{2}$ " (\varnothing 12mm)



VS
Vacuum Straight
Cutter $\frac{1}{2}$ " (\varnothing 12mm)



VI
Vacuum Internal Thread
Cutter $\frac{7}{16}$ " (\varnothing 11mm)
Choose Foot Style From Table



VE
Vacuum External Thread
Cutter $\frac{1}{2}$ " (\varnothing 12mm)
Choose Foot Style From Table



Part Number

WES397

Do not modify, copy, distribute, or reproduce this drawing without prior written authorization.

© 2025 Wescon Industries Inc.
601 Century Plaza Dr. Houston, TX 77073, US
www.wesconusa.com

Wescon 397 Microstop

Revision 03

All dimensions are in inches

Information in this drawing is provided for reference only

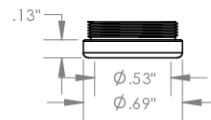
Image 2

**Foot Style
For External Thread**



| Part Number | Material |
|-------------|----------|
| 39631-N | Nylon |
| 39631-S | Steel |
| 39631-P | Phenolic |

**Foot Style
For Internal Thread**



| Part Number | Material |
|-------------|----------|
| 39620-N | Nylon |
| 39620-S | Steel |
| 39620-P | Phenolic |

| | | | |
|---|---|---|---------------|
|  | | Part Number | WES397 |
| | | Wescon 397 Microstop | |
| Revision 03 | Do not modify, copy, distribute, or reproduce this drawing without prior written authorization. All dimensions are in inches | © 2025 Wescon Industries Inc. 601 Century Plaza Dr. Houston, TX 77073, US www.wesconusa.com Information in this drawing is provided for reference only | |

Image 3