

## DATASHEET

### PART NUMBER

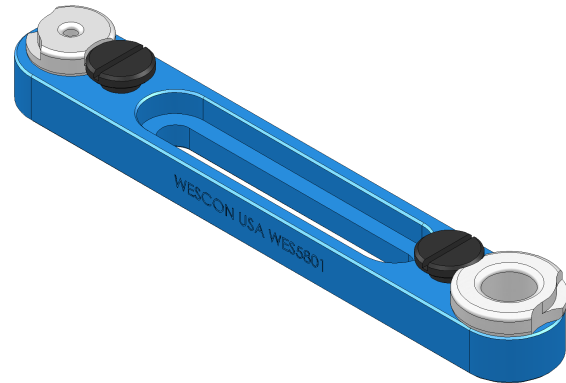
**WES5801**

### Wescon WES5801 SR Type Adjustable Drill Bar - 1/2" and 3/4" Double Ended Bushing

SR-type adjustable double ended drill bars, for 1/2" and 3/4" O.D. slip/fix-type bushings.

### WEBSITE

<https://www.wesconusa.com/products/WES5801>



The WES5801 has two bushing stations in one tool, accommodating 1/2" and 3/4" bushings. This tight-tolerance adjustable drill bar, also called a "snatch block" or "steam boat", allows quick setups and reduces tool changes. Made in the USA from anodized aluminum, it's precise and reliable for hole alignment, reaming, or enlarging existing holes in sheet metal and aircraft structures.

### SPECIFICATIONS

Bushing Size	1/2" and 3/4" Double Ended
Bushing Type	SR/SF Drill Bushing
Bushing Length	1/2 in
Country of Origin	USA

ADDITIONAL IMAGES AND DRAWINGS

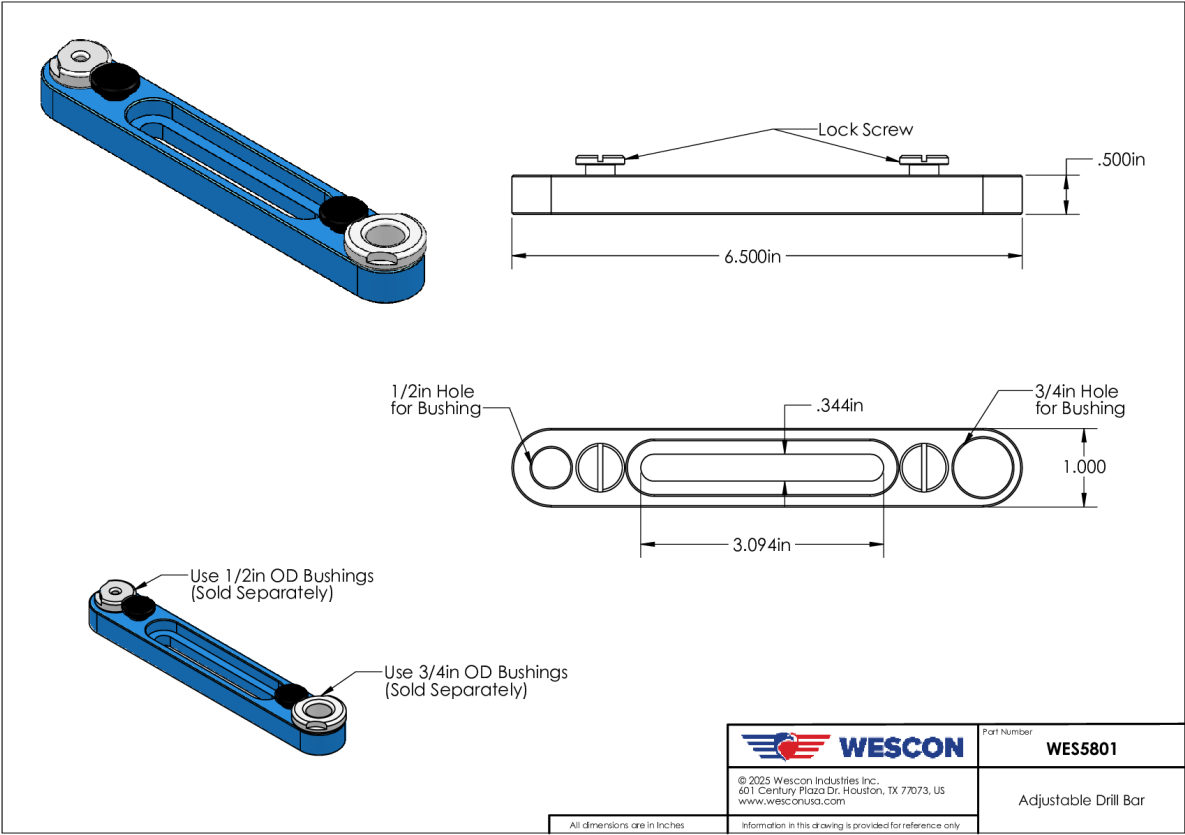


Image 1