

DATASHEET

PART NUMBER

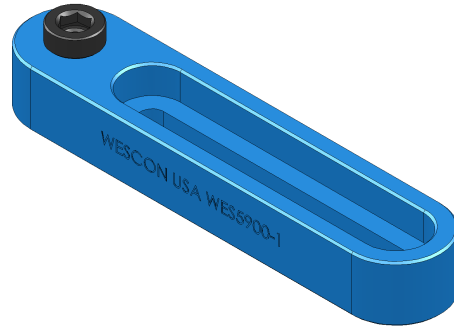
WES5900-1

Wescon WES5900 Threaded Type Adjustable Drill Bar - 3/8-16 Bushing

Adjustable drill bars for WES5501 series 3/8-16 thread bushings.

WEBSITE

<https://www.wesconusa.com/products/WES5900-1>



* The image represents the general look of the series. Actual product may vary based on options selected.

The WES5900 is built for WES5501 or any standard 3/8-16 OD threaded bushings and WES5502 or any standard 1/2-13 OD threaded bushings, providing a secure, precise fit. This high-precision adjustable drill bar, also known as a "snatch block" or "steam boat", allows drilling, reaming, or pulling holes without wandering. Made in the USA from anodized aluminum and engineered for accurate drilling, it's lightweight and easy to handle, ideal for aircraft assembly, maintenance, and structural repair.

SPECIFICATIONS

Bushing Size	3/8-16
Bushing Type	Threaded
Bushing Length	0.80 in
Country of Origin	USA

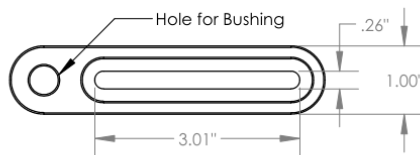
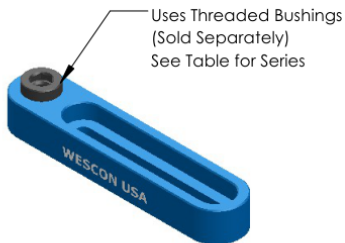
ADDITIONAL IMAGES AND DRAWINGS

WES5900 Series Drill Bar

Guide Type: Threaded Adjustable Drill Bar

Body Material: Anodized Aluminium

Part Number	Threaded Bushings	Wescon Bushing P/N
WES5900-1	3/8-16 Thread x 0.60" LG	WES5501 Series
WES5900-2	1/2-13 Thread x 0.60" LG	WES5502 Series



Similar Products:

View WES5800 Series: For Drill Bar /w SR Bushing



Part Number **WES5900 Series**

Do not modify, copy, distribute, or reproduce this drawing without prior written authorization.

© 2025 Wescon Industries Inc.
601 Century Plaza Dr. Houston, TX 77073, US
www.wesconusa.com

Adjustable Drill Bar

Revision 02 All dimensions are in Inches Information in this drawing is provided for reference only

Image 1