

## DATASHEET

### PART NUMBER

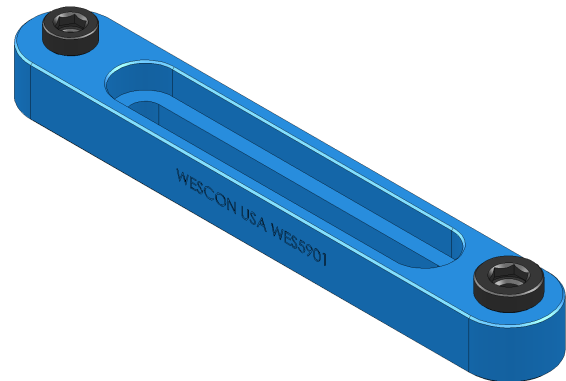
**WES5901**

### Wescon WES5901 Threaded Type Adjustable Drill Bar - 3/8-16 and 1/2-13 Double Ended Bushing

Adjustable doubled-ended drill bars, for WES5501 (3/8-16) and WES5502 (1/2-13) thread bushings.

### WEBSITE

<https://www.wesconusa.com/products/WES5901>



The WES5901 offers two bushing sizes in one tool for quick transitions and fewer tool changes. Compatible with WES5501 / 3/8-16 OD and WES5502 / 1/2-13 OD threaded bushings, it's precise and easy to use. This tight-tolerance adjustable drill bar, also called a "snatch block" or "steam boat", is made in the USA from anodized aluminum. Perfect for hole alignment, reaming, or repair work in aircraft sheet metal or structural components.

## SPECIFICATIONS

Bushing Size	3/8-16 and 1/2-13 Double Ended
Bushing Type	Threaded
Bushing Length	0.80 in
Country of Origin	USA

ADDITIONAL IMAGES AND DRAWINGS

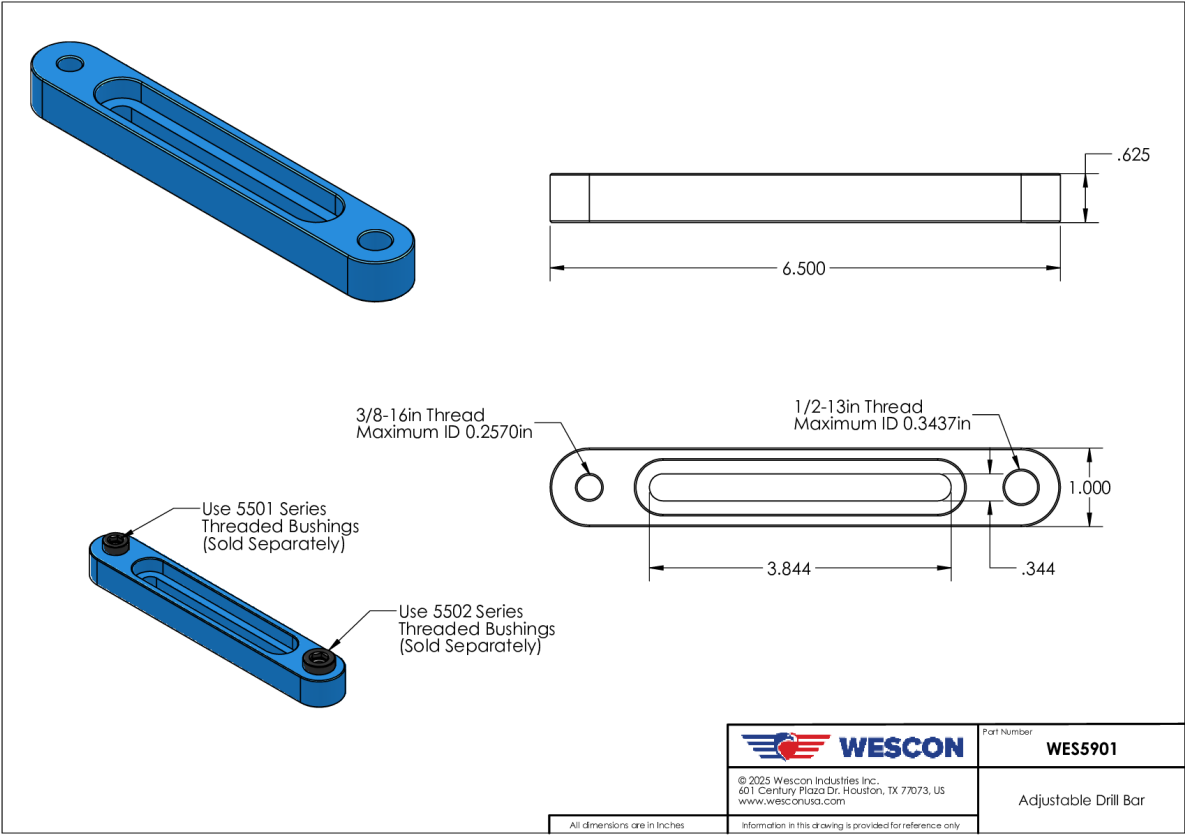


Image 1