

## DATASHEET

### PART NUMBER

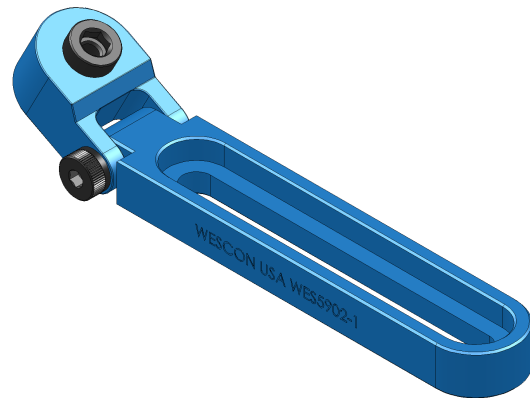
**WES5902-1**

### Wescon WES5902 Threaded Type Adjustable Drill Bar - 3/8-16 Bushing

Adjustable drill bars with swivel head (up-down) for WES5501 series 3/8-16 thread bushings.

### WEBSITE

<https://www.wesconusa.com/products/WES5902-1>



The WES5902 features an up-down swivel head for drilling over misaligned or angled holes with WES5501 / 3/8-16 OD or WES5502 / 1/2-13 OD threaded bushings. This adjustable drill bar, also known as a "snatch block" or "steam boat", keeps the bushing steady while allowing precise angle adjustments. Made in the USA from anodized aluminum and engineered for accurate drilling, it's ideal for aircraft hole repair, reaming, or pulling slightly offset holes.

## SPECIFICATIONS

Bushing Size	3/8-16
Bushing Type	Threaded
Bushing Length	0.80 in
Country of Origin	USA

ADDITIONAL IMAGES AND DRAWINGS

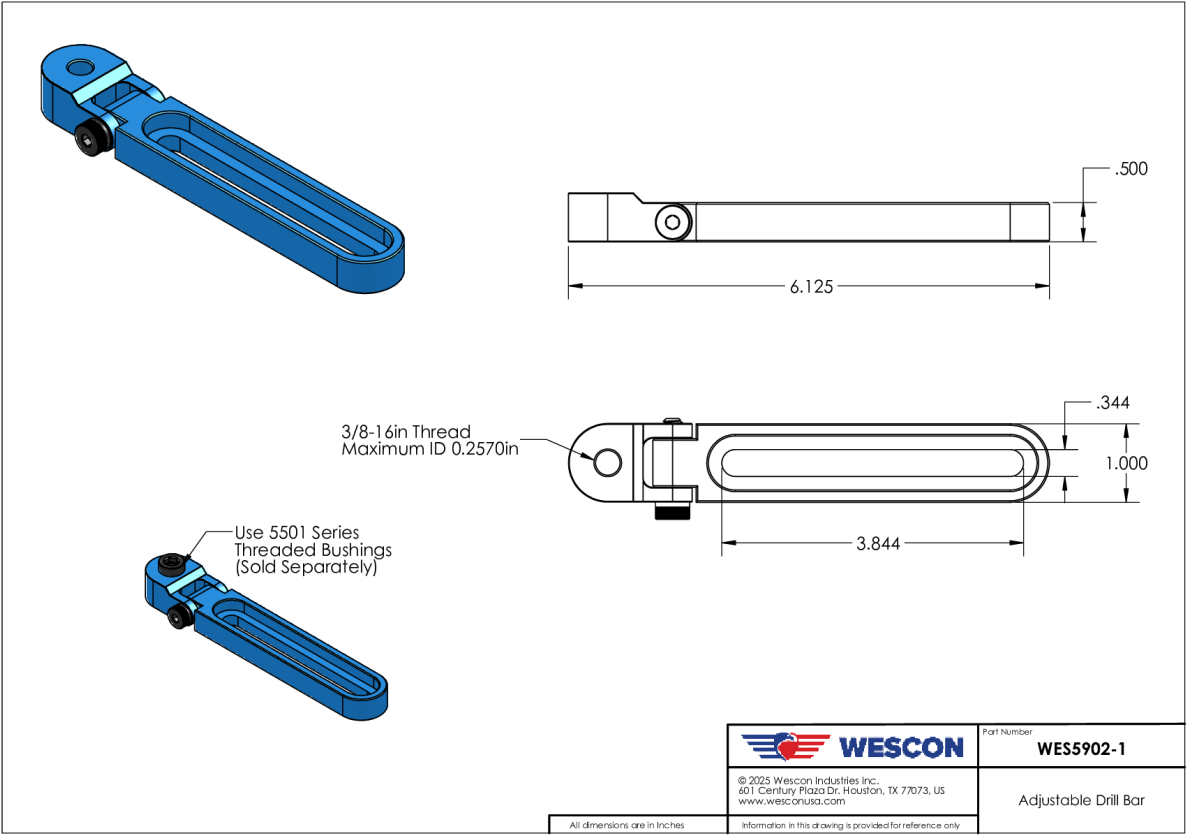


Image 0

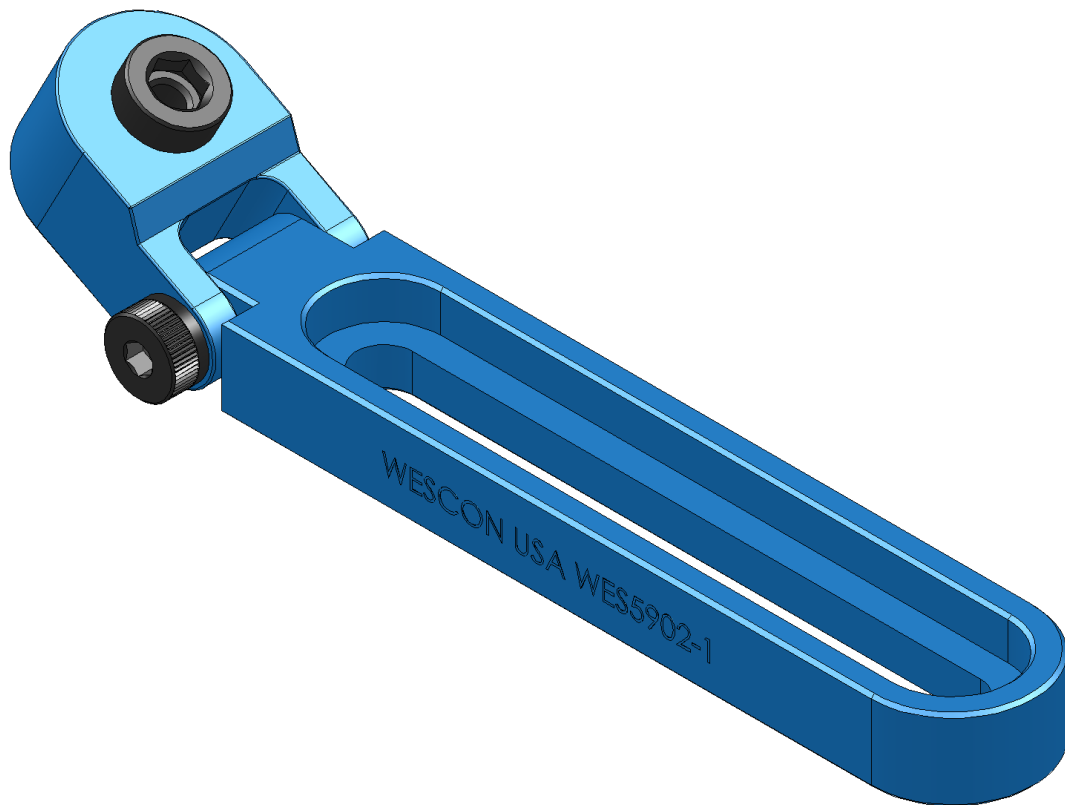


Image 1