

## DATASHEET

### PART NUMBER

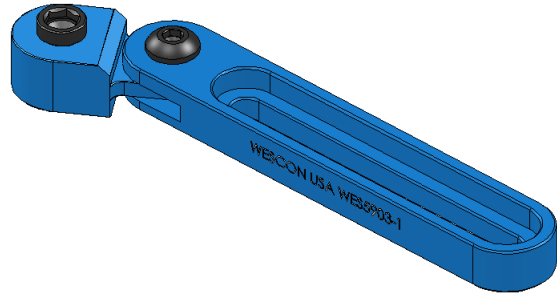
**WES5903-1**

### Wescon WES5903 Threaded Type Adjustable Drill Bar - 3/8-16 Bushing

Adjustable drill bars with swivel head (left-right) for WES5501 series 3/8-16 thread bushings.

### WEBSITE

<https://www.wesconusa.com/products/WES5903-1>



The WES5903 has a left-right swivel head for precise drilling over offset or angled holes. It works with WES5501 / 3/8-16 OD and WES5502 / 1/2-13 OD threaded bushings, giving flexibility without sacrificing stability. This high-precision adjustable drill bar, also known as a "snatch block" or "steam boat", is made in the USA from anodized aluminum. Perfect for aircraft sheet metal repair, structural hole alignment, and maintenance tasks where accuracy is critical.

### SPECIFICATIONS

Bushing Size	3/8-16
Bushing Type	Threaded
Bushing Length	0.80 in
Country of Origin	USA

ADDITIONAL IMAGES AND DRAWINGS

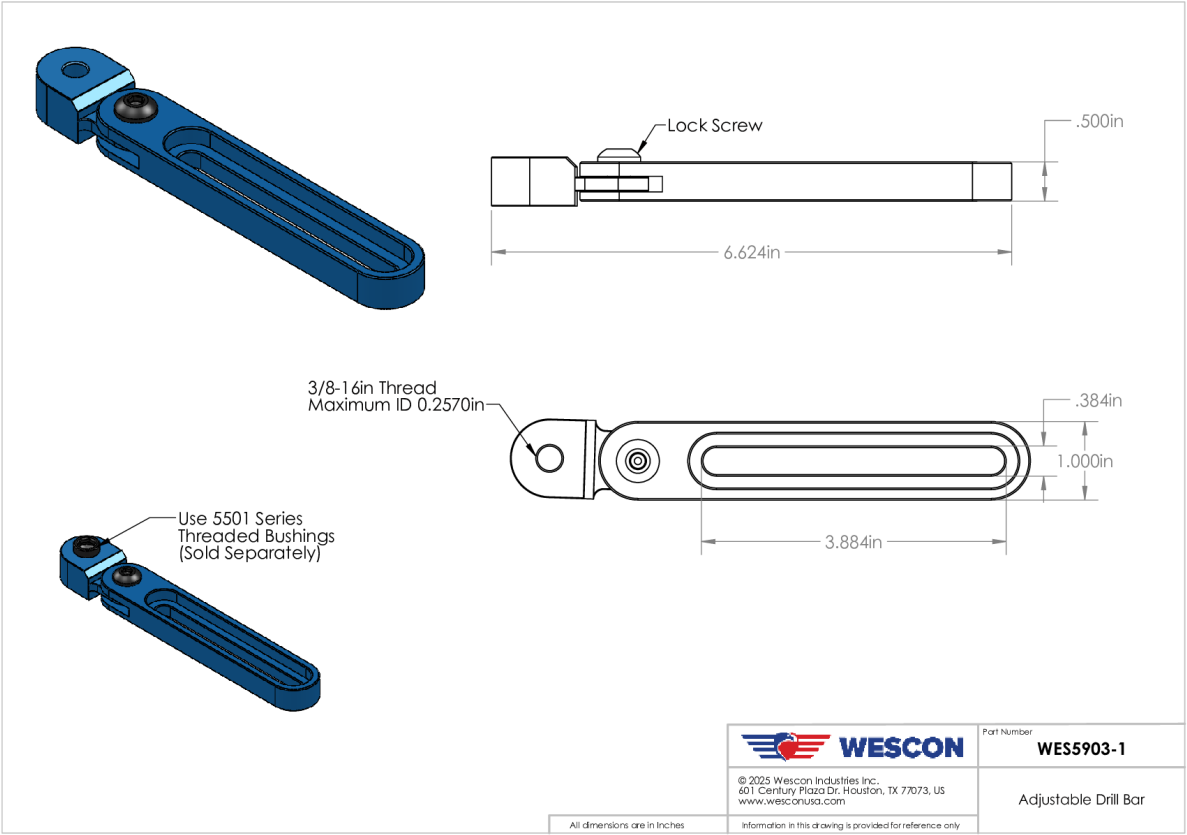


Image 1