

DATASHEET

PART NUMBER

WES596-8-BWES-TF

**Wescon 596 Microstop - M8x1 - 25.4 mm Cutter
Capacity - Bell Wide External Thread Skirt -
Steel Foot**

HIGH SPEED HEAVY DUTY

WEBSITE

<https://www.wesconusa.com/products/WES596-8-BWES-TF>



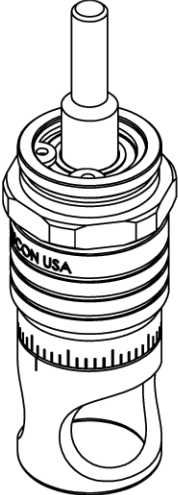
* The image represents the general look of the series. Actual product may vary based on options selected.

SPECIFICATIONS

Measurement Type	Metric
Bearing Rating	10,000 rpm
Bearing Type	Dual Ball Bearings
Heavy Duty Thrust Bearing	Yes
Incremental Adjustment	0.013 mm
Shaft Travel	7.60 mm
Dust Seal	Integrated Dust Seal
Cutter Thread	M8x1
Shaft	Tri-Flat
Shaft Diameter	6.35 mm
Cutter Capacity	25.4 mm
Skirt	Bell Wide External Thread
Skirt Description	25.4 mm Cutter Capacity
Foot	Steel
Solid Stop	Yes
Material	Steel
Country of Origin	USA

ADDITIONAL IMAGES AND DRAWINGS

WES596 SERIES MICROSTOP



Part Number
WES596-X-XX-XX

- Shaft Option
- Foot Style
- Skirt Option*
- Cutter Thread

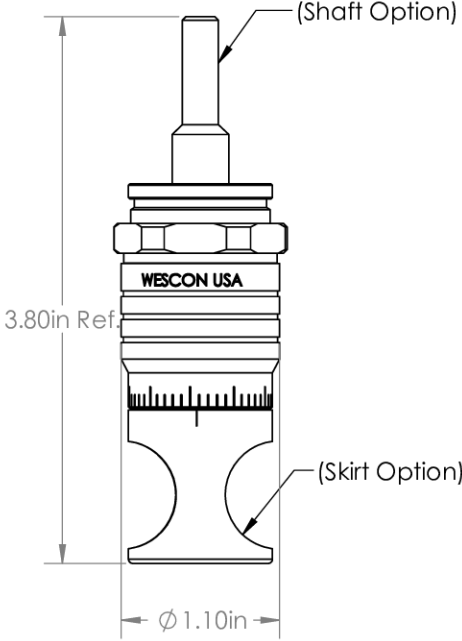
Code	Cutter Thread
(Blank)	1/4-28
6	M6x1
8	M8x1


Code	Foot Style
N	Nylon
S	Steel
P	Phenolic

Code	Shaft Option
(Blank)	Round
-QC	Quick Change
-TF	Tri Flat
-TSL	1/4-28in Threaded Shank Long

Incremental Adjustment: 0.0005 in
Shaft Travel: 0.300 in

Bearing Rating: 10,000 rpm
Bearing Type: Dual Ball-Bearings
Dust Seal: Integrated Dust Seal
Heavy Duty Thrust Bearing: Yes
Solid Stop: Yes



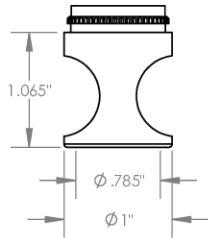
	Part Number WES596
© 2025 Wescon Industries Inc. 401 Century Plaza Dr. Houston, TX 77073, US www.wesconusa.com	Wescon 596 Microstop

*For Skirt options see next page and website.

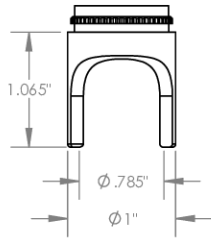
All dimensions are in Inches. Information in this drawing is provided for reference only.

Image 1

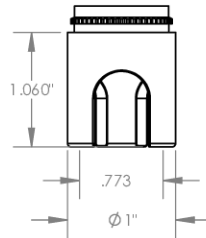
Skirt Option



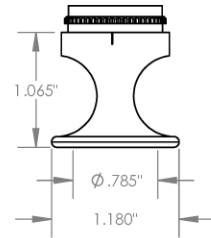
S
Straight
Cutter $\phi 3/4"$ ($\phi 19\text{mm}$)



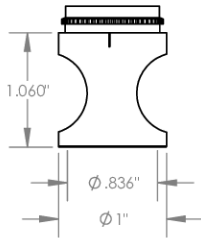
S2L
2-Leg
Cutter $\phi 3/4"$ ($\phi 19\text{mm}$)



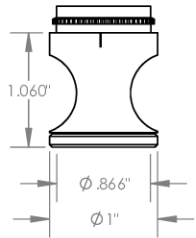
S3L
3-Leg
Cutter $\phi 3/4"$ ($\phi 19\text{mm}$)



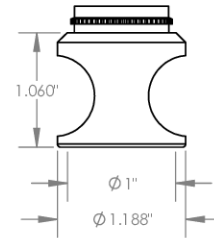
F
Flanged
Cutter $\phi 3/4"$ ($\phi 19\text{mm}$)



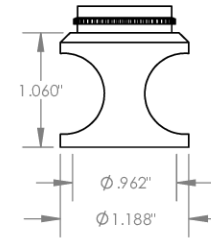
I
Internal Thread
Cutter $\phi 5/8"$ ($\phi 15\text{mm}$)



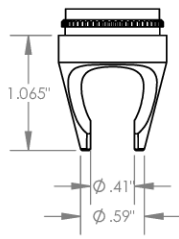
E
External Thread
Cutter $\phi 3/4"$ ($\phi 19\text{mm}$)



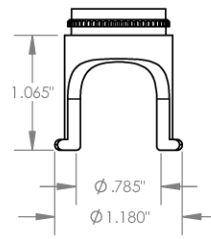
B
Bell
Cutter $\phi 7/8"$ ($\phi 22\text{mm}$)



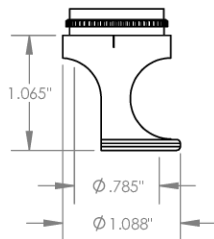
BI
Bell Internal Thread
Cutter $\phi 3/4"$ ($\phi 19\text{mm}$)



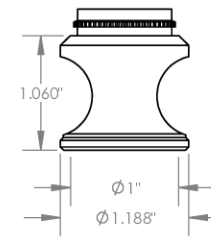
C
Close Quarters
Cutter $\phi 3/8"$ ($\phi 10\text{mm}$)



F2L
Flanged 2-Leg
Cutter $\phi 3/4"$ ($\phi 19\text{mm}$)



FCA
Flanged Cutaway
Cutter $\phi 3/4"$ ($\phi 19\text{mm}$)



BE
Bell External Thread
Cutter $\phi 7/8"$ ($\phi 22\text{mm}$)



© 2025 Wescon Industries Inc.
401 Century Plaza Dr. Houston, TX 77073, US
www.wesconusa.com

Part Number

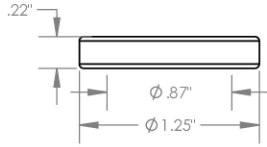
WES596

Wescon 596 Microstop

All dimensions are in Inches. Information in this drawing is provided for reference only.

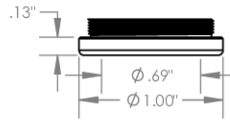
Image 2

**Foot Style
For External Thread**



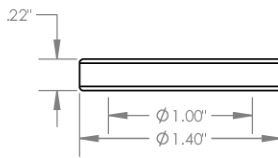
Part Number	Material
59631-N	Nylon
59631-S	Steel
59361-P	Phenolic

**Foot Style
For Internal Thread**



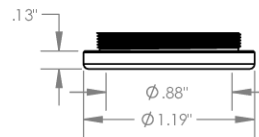
Part Number	Material
59620-N	Nylon
59620-S	Steel
59620-P	Phenolic

**Foot Style
For Bell External Thread**



Part Number	Material
59641-N	Nylon
59641-S	Steel
59641-P	Phenolic

**Foot Style
For Bell Internal Thread**



Part Number	Material
59640-N	Nylon
59640-S	Steel
59640-P	Phenolic

 <p>© 2025 Wescon Industries Inc. 401 Century Plaza Dr. Houston, TX 77073, US www.wesconusa.com</p>	Part Number
	WES596
Wescon 596 Microstop	

All dimensions are in Inches. Information in this drawing is provided for reference only.

Image 3