

## DATASHEET

### PART NUMBER

## WES596-ER14-TF

Wescon 596-ER Extended Reach - 1/4-28 - 1/2"  
 Cutter Capacity - 5.00 in Length 1/2 in Cutter  
 Capacity Skirt - Nylon Foot

### EXTENDED REACH UNITS

### WEBSITE

<https://www.wesconusa.com/products/WES596-ER14-TF>



\* The image represents the general look of the series. Actual product may vary based on options selected.

## SPECIFICATIONS

Measurement Type	Imperial
Bearing Rating	10,000 rpm
Bearing Type	Dual Ball Bearings
Heavy Duty Thrust Bearing	Yes
Incremental Adjustment	0.0005 in
Shaft Travel	0.300 in
Dust Seal	Integrated Dust Seal
Cutter Thread	1/4-28
Shaft	Tri-Flat
Shaft Diameter	1/4 in
Cutter Capacity	1/2 in
Skirt	5.00 in Length 1/2 in Cutter Capacity
Skirt Length	5.00 in
Skirt Description	0.688 in OD 1/2 in Cutter Capacity
Foot	Nylon
Solid Stop	Yes
Material	Steel

Country of Origin

USA

## ADDITIONAL IMAGES AND DRAWINGS

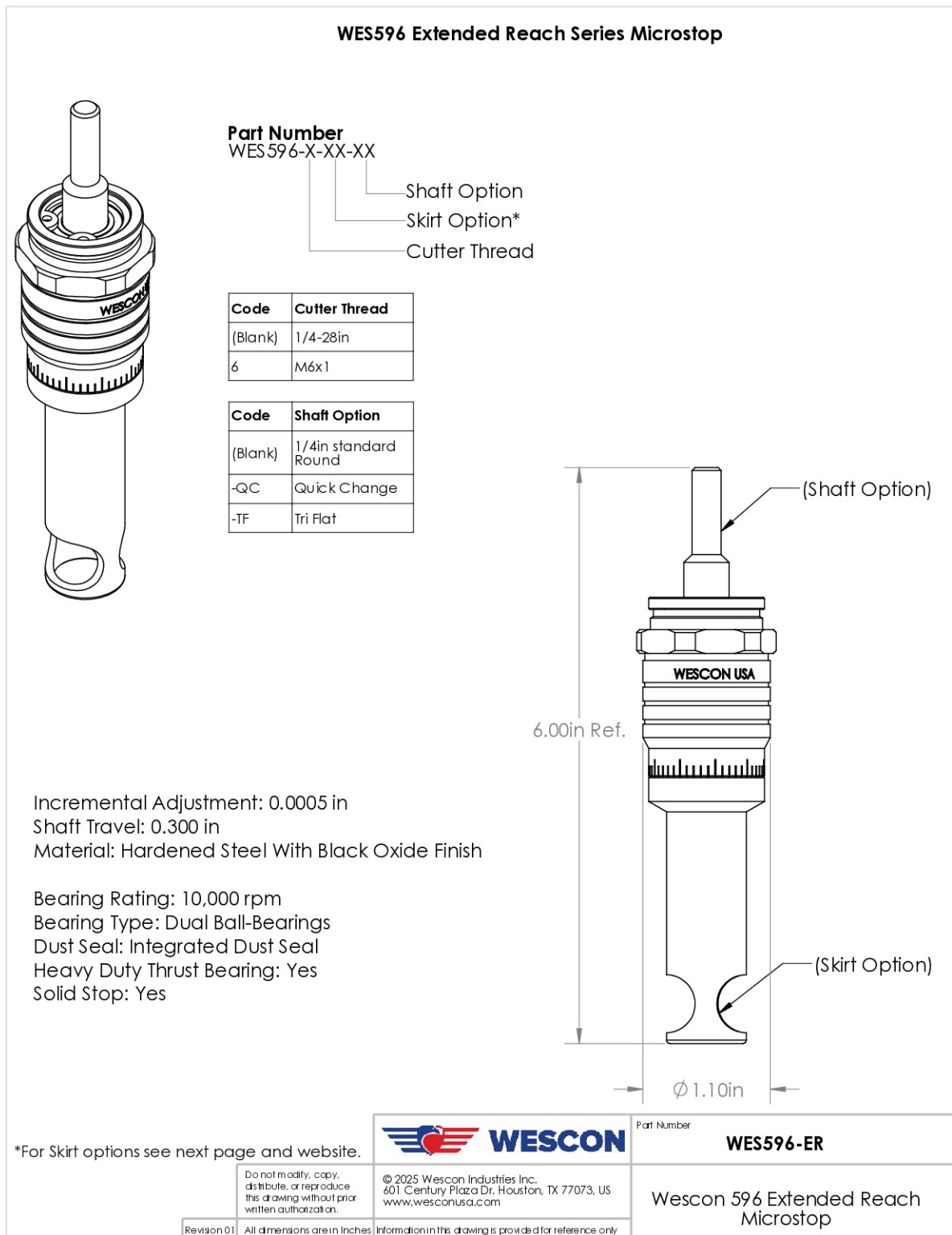
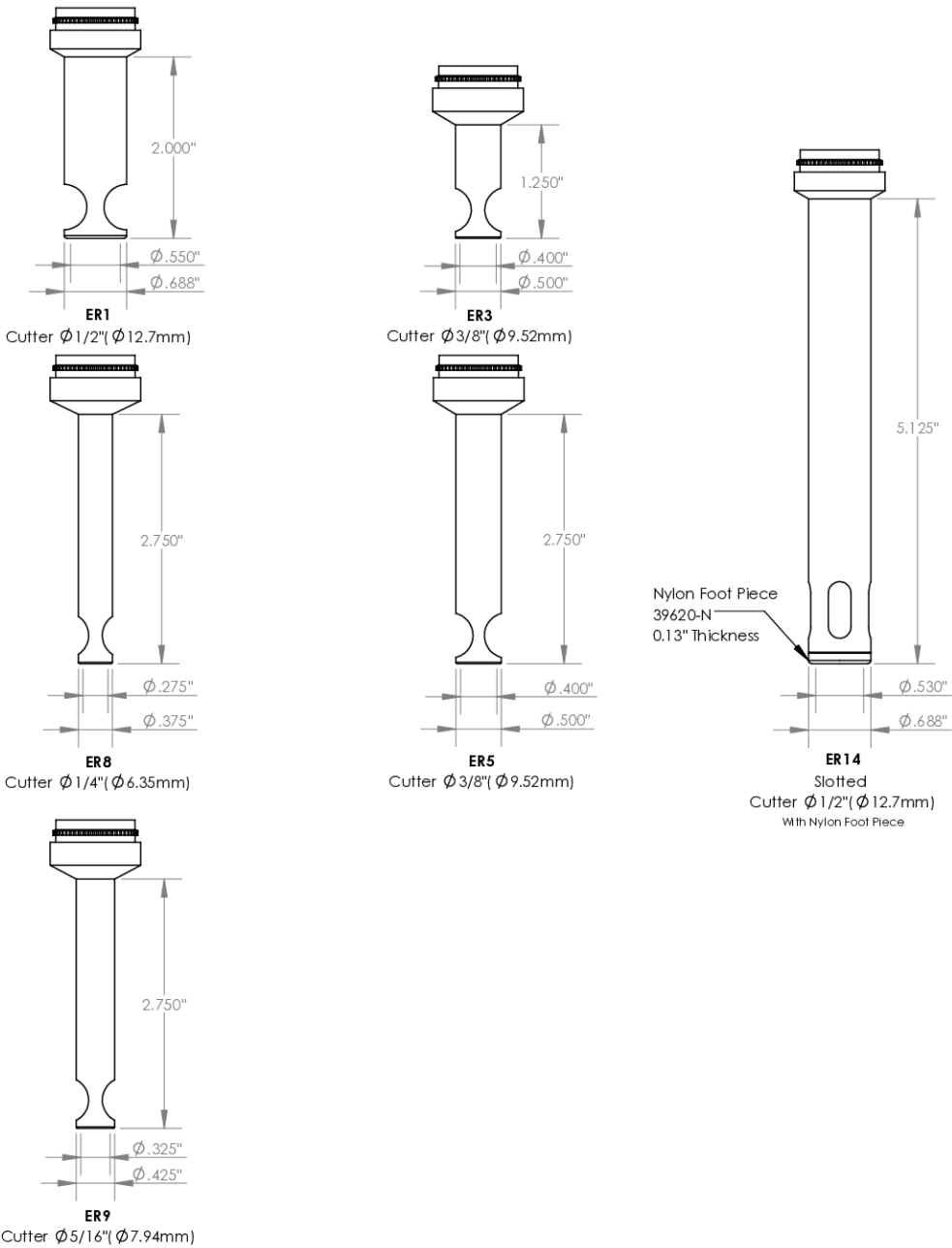


Image 1

Skirt Option



		Part Number	<b>WES596-ER</b>
<div>Do not modify, copy, distribute, or reproduce this drawing without prior written authorization.</div> <div>© 2025 Wescon Industries Inc. 601 Century Plaza Dr. Houston, TX 77073, US www.wesconusa.com</div>		Wescon 596 Extended Reach Microstop	
Revision 01	All dimensions are in inches	Information in this drawing is provided for reference only	

Image 2