

## DATASHEET

### PART NUMBER

## WES596-ER5-TF

**Wescon 596-ER Extended Reach - 1/4-28 - 3/8"**  
**Cutter Capacity - 2.75 in Length 3/8 in Cutter**  
**Capacity Skirt**

### EXTENDED REACH UNITS

### WEBSITE

<https://www.wesconusa.com/products/WES596-ER5-TF>



\* The image represents the general look of the series. Actual product may vary based on options selected.

## SPECIFICATIONS

Measurement Type	Imperial
Bearing Rating	10,000 rpm
Bearing Type	Dual Ball Bearings
Heavy Duty Thrust Bearing	Yes
Incremental Adjustment	0.0005 in
Shaft Travel	0.300 in
Dust Seal	Integrated Dust Seal
Cutter Thread	1/4-28
Shaft	Tri-Flat
Shaft Diameter	1/4 in
Cutter Capacity	3/8 in
Skirt	2.75 in Length 3/8 in Cutter Capacity
Skirt Length	2.75 in
Skirt Description	0.500 in OD 3/8 in Cutter Capacity
Solid Stop	Yes
Material	Steel
Country of Origin	USA

ADDITIONAL IMAGES AND DRAWINGS

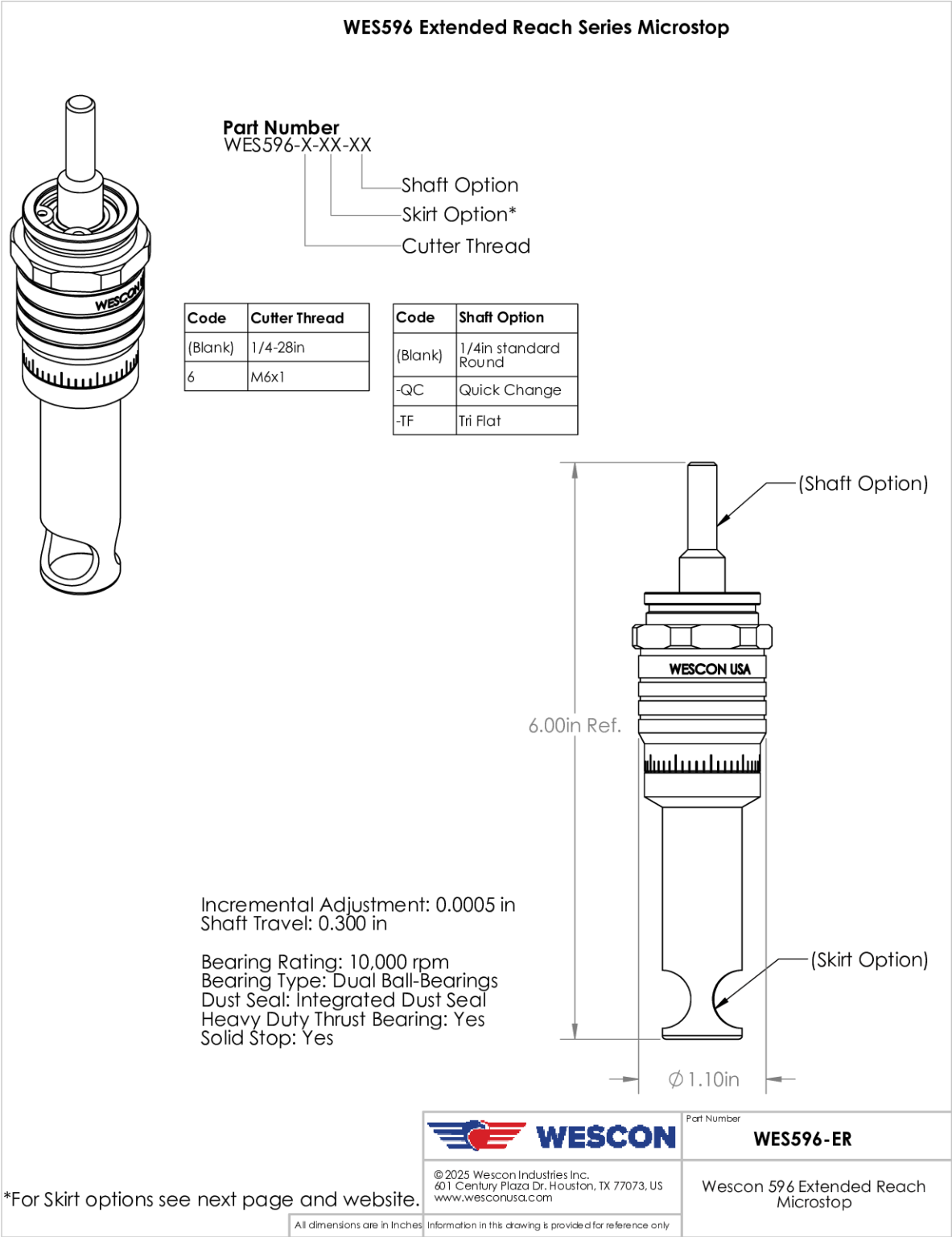
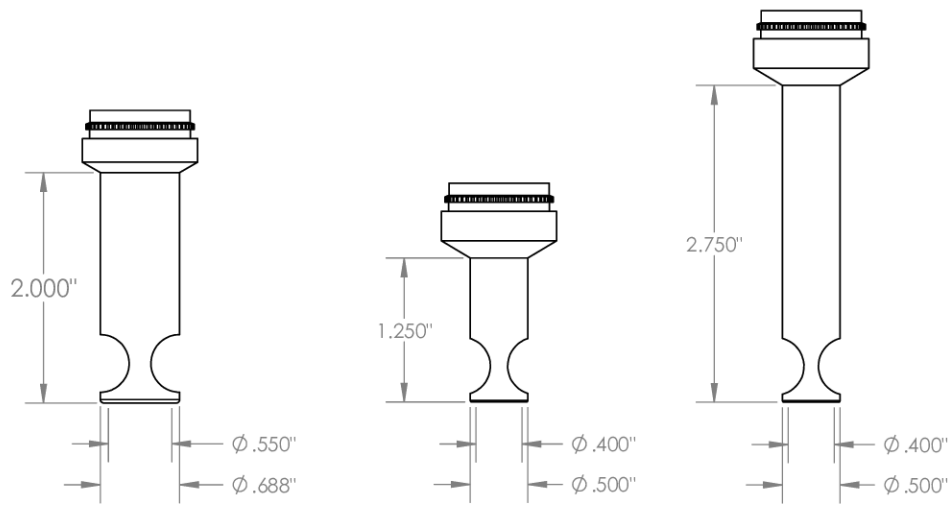


Image 1

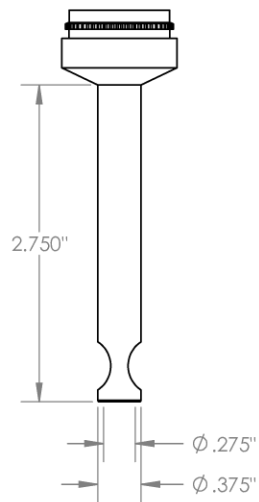
### Skirt Option



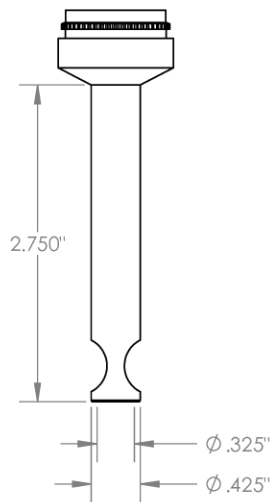
**ER1**  
Cutter  $\phi 1/2''$  ( $\phi 12.7\text{mm}$ )

**ER3**  
Cutter  $\phi 3/8''$  ( $\phi 9.52\text{mm}$ )

**ER5**  
Cutter  $\phi 3/8''$  ( $\phi 9.52\text{mm}$ )



**ER8**  
Cutter  $\phi 1/4''$  ( $\phi 6.35\text{mm}$ )



**ER9**  
Cutter  $\phi 5/16''$  ( $\phi 7.94\text{mm}$ )

 <b>WESCON</b>	Part Number <b>WES596-ER</b>
© 2025 Wescon Industries Inc. 401 Century Plaza Dr. Houston, TX 77073, US www.wesconusa.com	Wescon 596 Extended Reach Microstop

All dimensions are in inches. Information in this drawing is provided for reference only.

Image 2