

## DATASHEET

PART NUMBER

# WES596-ES-750-ES

**Wescon 596-ES Extended Stroke Microstop -  
1/4-28 - 5/8" Cutter Capacity - External Steel Foot**

EXTENDED STROKE UNITS FOR DRILL / COUNTERSINK  
AND SPECIAL LENGTH CUTTERS

WEBSITE

<https://www.wesconusa.com/products/WES596-ES-750-ES>



\* The image represents the general look of the series. Actual product may vary based on options selected.

## SPECIFICATIONS

Measurement Type	Imperial
Bearing Rating	10,000 rpm
Bearing Type	Dual Ball-Bearings
Heavy Duty Thrust Bearing	Yes
Incremental Adjustment	0.0005 in
Shaft Travel	.750 in
Dust Seal	Integrated Dust Seal
Cutter Thread	1/4-28
Shaft	Round
Shaft Diameter	1/4 in
Cutter Capacity	5/8 in
Skirt	External Thread
Foot	Steel
Solid Stop	Yes
Material	Steel
Country of Origin	USA

**ADDITIONAL IMAGES AND DRAWINGS**

**WES596 Extended Stroke Series Microstop**



**Part Number**  
**WES596-ES-XX-XX-XX**

- Shaft Option
- Foot Style
- Skirt Option\*
- Stroke Length

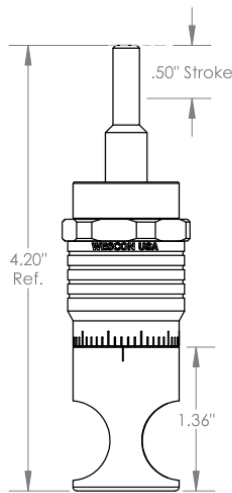
Incremental Adjustment: 0.0005 in  
 Cutter Thread: 1/4-28  
 Material: Carbon Steel Body with  
 Hardened Tool Steel Shaft

Bearing Rating: 10,000 rpm  
 Bearing Type: Dual Ball-Bearings  
 Dust Seal: Integrated Dust Seal  
 Heavy Duty Thrust Bearing: Yes  
 Solid Stop: Yes

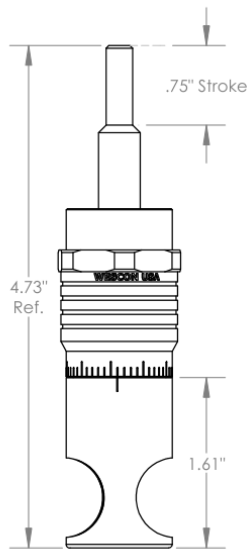
Code	Stroke Length
500	.500in Shaft Travel
750	.750in Shaft Travel
1000	1.000in Shaft Travel

Code	Foot Style
N	Nylon
S	Steel
P	Phenolic

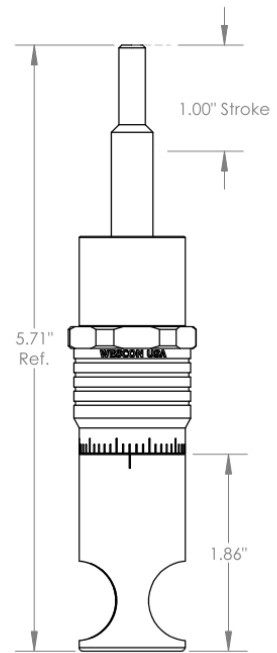
Code	Shaft Option
(Blank)	Round
TF	Tri Flat



**ES-500**  
 .500in Shaft Travel



**ES-750**  
 .750in Shaft Travel



**ES-1000**  
 1.000in Shaft Travel

\*For Skirt options see next page and website



Part Number **WES596-ES**

Do not modify, copy, distribute, or reproduce this drawing without prior written authorization.

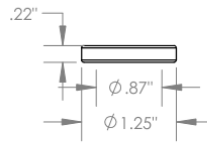
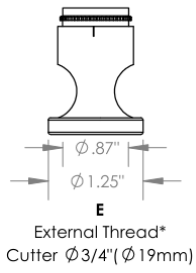
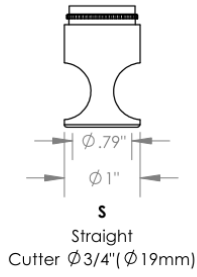
© 2025 Wescon Industries Inc.  
 601 Century Plaza Dr. Houston, TX 77073, US  
 www.wesconusa.com

**Wescon 596 Extended Stroke Microstop**

Revision 04 All dimensions are in Inches Information in this drawing is provided for reference only

Image 1

### Skirt Option



Part Number	Material
59631-N	Nylon
59631-S	Steel
59631-P	Phenolic

Foot Style For External Thread

\*Select foot style from table



Part Number

**WES596-ES**

Do not modify, copy, distribute, or reproduce this drawing without prior written authorization.

© 2025 Wescon Industries Inc.  
601 Century Plaza Dr. Houston, TX 77073, US  
www.wesconusa.com

Wescon 596 Extended Stroke  
Microstop

Revision 04

All dimensions are in Inches

Information in this drawing is provided for reference only

Image 2