

DATASHEET

PART NUMBER

WES596-EXA-S-875-QC

**Wescon 596-EXA Extended Adjustment
Microstop - 1/4-28 - 5/8" Cutter Capacity -
Straight 0.875 in OD Skirt**

Extended skirt adjustment of .750 in for variable length cutters.

WEBSITE

<https://www.wesconusa.com/products/WES596-EXA-S-875-QC>



* The image represents the general look of the series. Actual product may vary based on options selected.

The Wescon 596-EXA Extended Adjustment Series Microstop features an extended skirt adjustment of .750 inches, making it ideal for applications requiring variable length cutters. This versatile design allows you to easily go from a Countersink Cutter, to the use of a Threaded Shank Drill or Reamer, Drill-Countersink, and even a short Spot-Facing Cutter, along with most everything in between.

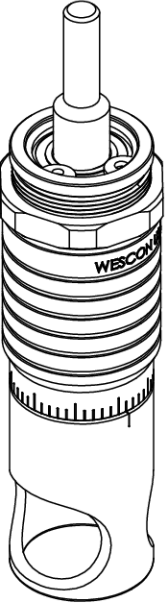
SPECIFICATIONS

Measurement Type	Imperial
Bearing Rating	10,000 rpm
Bearing Type	Dual Ball Bearings
Heavy Duty Thrust Bearing	Yes
Incremental Adjustment	0.0005 in
Shaft Travel	0.300 in
Dust Seal	Integrated Dust Seal
Cutter Thread	1/4-28
Shaft	Quick Change
Shaft Diameter	1/4 in
Cutter Capacity	5/8 in
Skirt	Straight 0.875 in OD
Skirt Description	0.875 in OD 5/8 in Cutter Capacity
Solid Stop	Yes

Material	Steel
Country of Origin	USA

ADDITIONAL IMAGES AND DRAWINGS

WES596 Extended Adjustment Series Microstop

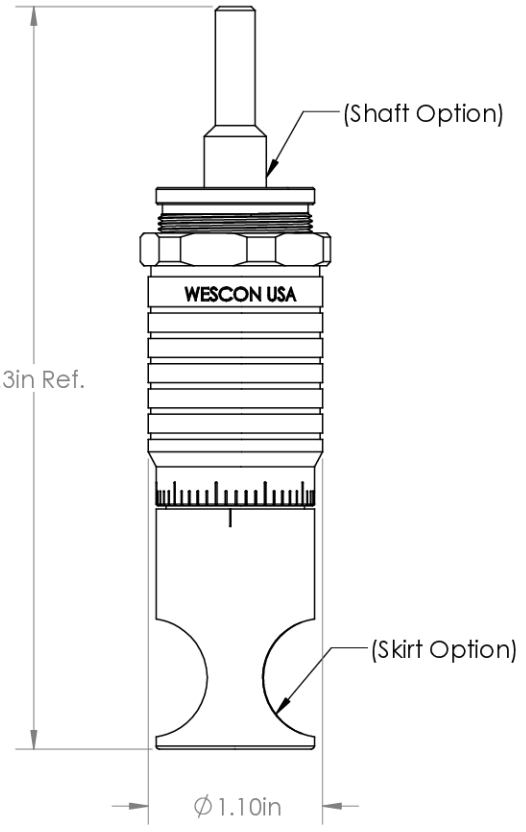


Part Number
WES596-EXA-XX-XX

- Shaft Option
- Foot Style
- Skirt Option*

Code	Shaft Option
(Blank)	Round
-QC	Quick Change
-TF	Tri Flat

Code	Foot Style
N	Nylon



5.3in Ref.

(Shaft Option)

(Skirt Option)

Ø 1.10in


Extended skirt adjustment of .75 for variable length cutters

Incremental Adjustment: 0.0005 in
 Shaft Travel: 0.300 in
 Cutter Thread: 1/4-28

Bearing Rating: 10,000 rpm
 Bearing Type: Dual Ball-Bearings
 Dust Seal: Integrated Dust Seal
 Heavy Duty Thrust Bearing: Yes
 Solid Stop: Yes

*For Skirt options see next page and website.

All dimensions are in Inches



© 2025 Wescon Industries Inc.
 401 Century Plaza Dr. Houston, TX 77073, US
www.wesconusa.com

Part Number

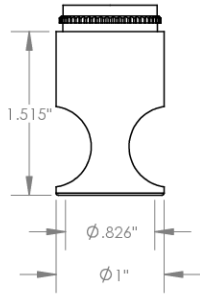
WES596-EXA

Wescon 596 Extended Adjustment Microstop

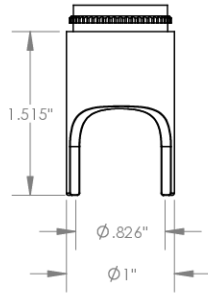
Information in this drawing is provided for reference only

Image 1

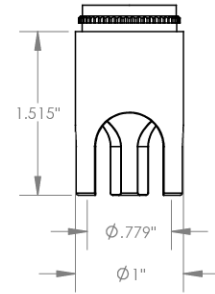
Skirt Option



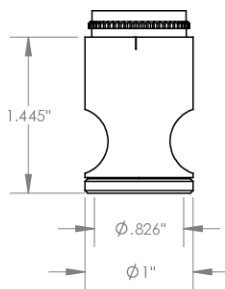
S
Straight
Cutter $\phi 3/4$ "



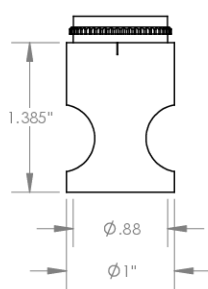
S2L
2-Leg
Cutter $\phi 3/4$ "



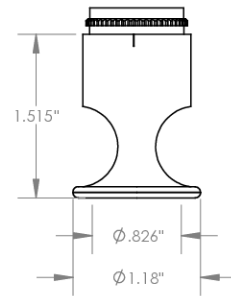
S3L
3-Leg
Cutter $\phi 3/4$ "



E
External
Thread
Cutter $\phi 3/4$ "
Choose Foot Style From Table



I
Internal
Thread
Cutter $\phi 5/8$ "
Choose Foot Style From Table



F
Flanged
Cutter $\phi 3/4$ "



© 2025 Wescon Industries Inc.
401 Century Plaza Dr. Houston, TX 77073, US
www.wesconusa.com

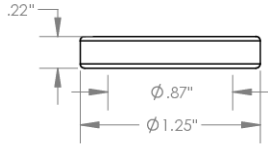
Part Number
WES596-EXA

Wescon 596 Extended
Adjustment Microstop

All dimensions are in inches. Information in this drawing is provided for reference only.

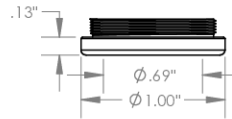
Image 2

**Foot Style
For External Thread**



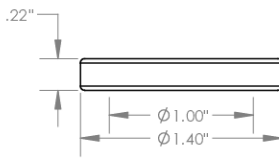
Part Number	Material
59631-N	Nylon
59631-S	Steel
59361-P	Phenolic

**Foot Style
For Internal Thread**



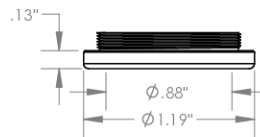
Part Number	Material
59620-N	Nylon
59620-S	Steel
59620-P	Phenolic

**Foot Style
For Bell External Thread**



Part Number	Material
59641-N	Nylon
59641-S	Steel
59641-P	Phenolic

**Foot Style
For Bell Internal Thread**



Part Number	Material
59640-N	Nylon
59640-S	Steel
59640-P	Phenolic

 <p>WESCON</p> <p>© 2025 Wescon Industries Inc. 401 Century Plaza Dr. Houston, TX 77073, US www.wesconusa.com</p>	Part Number WES596-EXA
	Wescon 596 Extended Adjustment Microstop

All dimensions are in inches. Information in this drawing is provided for reference only.

Image 3