

## DATASHEET

### PART NUMBER

## WES597-SL-TF

**Wescon 597 Stainless Steel - 1/4-28 - 3/4"**

**Cutter Capacity - Slotted Skirt**

HIGH SPEED HEAVY DUTY STAINLESS STEEL

### WEBSITE

<https://www.wesconusa.com/products/WES597-SL-TF>



\* The image represents the general look of the series. Actual product may vary based on options selected.

## SPECIFICATIONS

Measurement Type	Imperial
Bearing Rating	10,000 rpm
Bearing Type	Dual Ball Bearings
Heavy Duty Thrust Bearing	Yes
Incremental Adjustment	0.0005 in
Shaft Travel	0.300 in
Dust Seal	Integrated Dust Seal
Cutter Thread	1/4-28
Shaft	Tri-Flat
Shaft Diameter	1/4 in
Cutter Capacity	3/4 in
Skirt	Slotted
Skirt Description	1 in OD 3/4 in Cutter Capacity
Solid Stop	Yes
Material	Stainless Steel
Country of Origin	USA

ADDITIONAL IMAGES AND DRAWINGS



Image 1

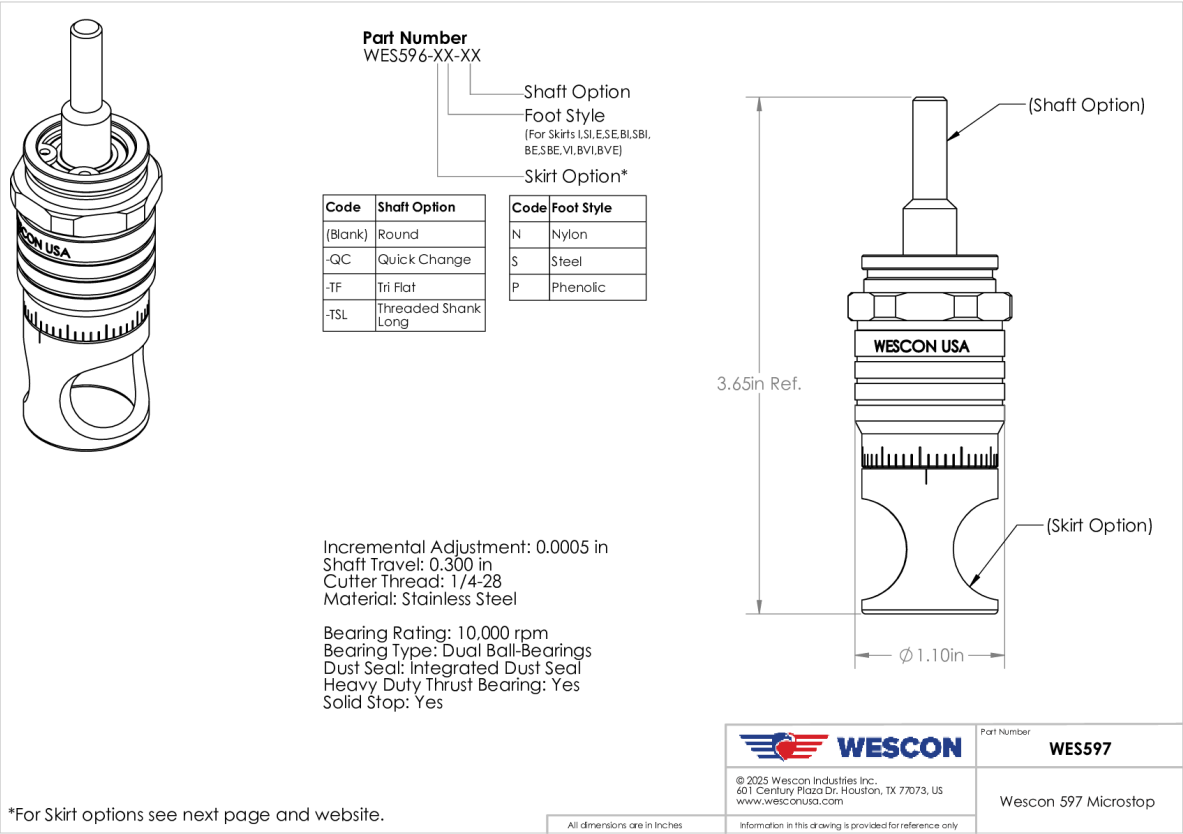


Image 2

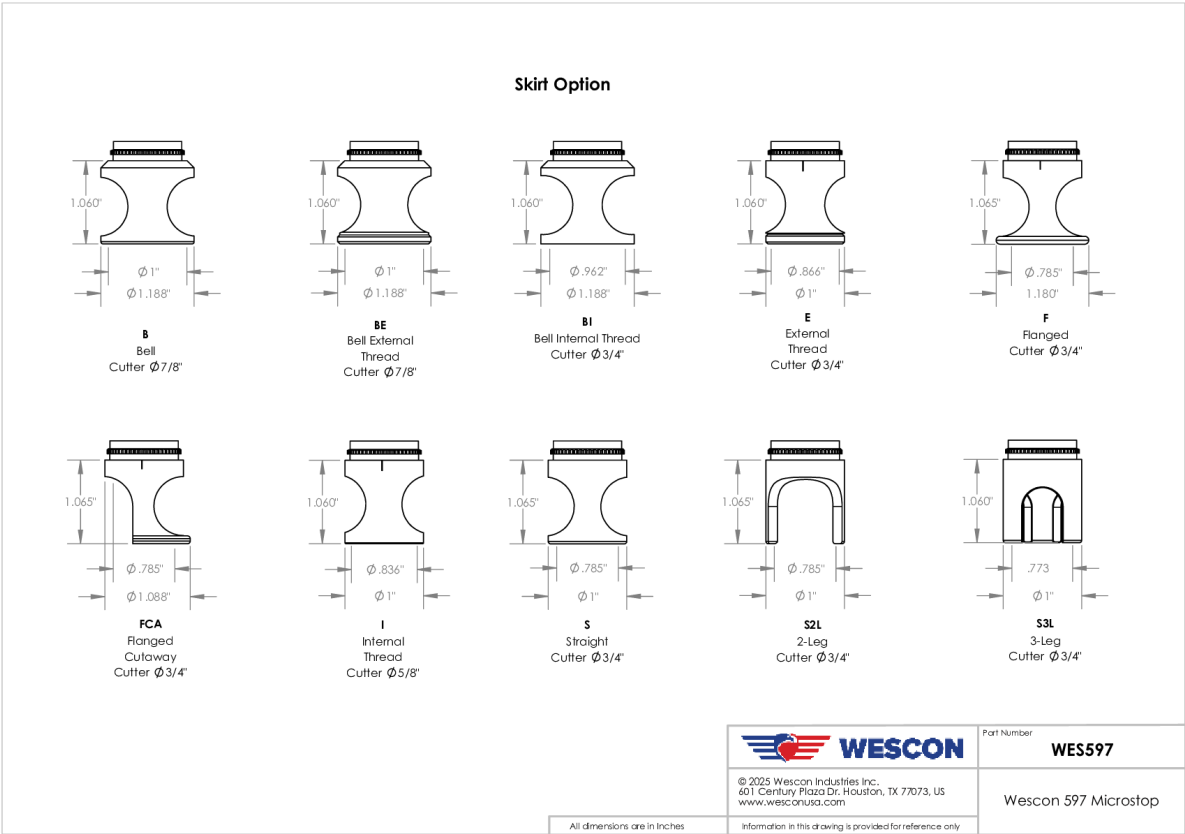


Image 3