

## DATASHEET

PART NUMBER

# WES598-8-C

**Wescon 598 Microstop - M8x1 - 9.52 mm Cutter  
Capacity - Close Quarters Skirt**

10 DEGREE PIVOTING SHAFT (SWIVEL SHAFT) / HIGH  
SPEED HEAVY DUTY

WEBSITE

<https://www.wesconusa.com/products/WES598-8-C>


\* The image represents the general look of the series. Actual product may vary based on options selected.

## SPECIFICATIONS

<b>Measurement Type</b>	Metric
<b>Bearing Rating</b>	10,000 rpm
<b>Bearing Type</b>	Dual Ball Bearings
<b>Heavy Duty Thrust Bearing</b>	Yes
<b>Incremental Adjustment</b>	0.013 mm
<b>Shaft Travel</b>	7.60 mm
<b>Dust Seal</b>	Integrated Dust Seal
<b>Cutter Thread</b>	M8x1
<b>Shaft</b>	Round - Pivoting / Swivel Shaft
<b>Shaft Diameter</b>	6.35 mm
<b>Cutter Capacity</b>	9.52 mm
<b>Skirt</b>	Close Quarters
<b>Skirt Description</b>	14.73 mm OD 9.52 mm Cutter Capacity
<b>Solid Stop</b>	Yes
<b>Material</b>	Steel
<b>Country of Origin</b>	USA

## ADDITIONAL IMAGES AND DRAWINGS

**Part Number**  
WES598-X-XX-XX

- Shaft Option
- Foot Style
- Skirt Option\*
- Cutter Thread

Code	Cutter Thread	Code	Shaft Option	Code	Foot Style
(Blank)	1/4-28	(Blank)	Round Swivel Shaft	N	Nylon
6	M6x1	-QC	Quick Change Swivel Shaft	S	Steel
8	M8x1	-TF	Tri Flat Swivel Shaft	P	Phenolic

Incremental Adjustment: 0.0005 in  
Shaft Travel: 0.300 in

Bearing Rating: 10,000 rpm  
Bearing Type: Dual Ball-Bearings  
Dust Seal: Integrated Dust Seal  
Heavy Duty Thrust Bearing: Yes  
Solid Stop: Yes

3.96in Ref.

5°

5°

(Shaft Option)

(Skirt Option)

∅ 1.00in

**WESCON USA**

<p>© 2025 Wescon Industries Inc. 601 Century Plaza Dr. Houston, TX 77073, US www.wesconusa.com</p>	Part Number <b>WES598</b>
	Wescon 598 Microstop

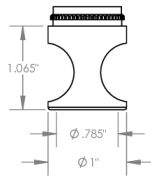
\*For Skirt options see next page and website.

All dimensions are in inches

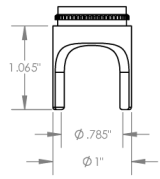
Information in this drawing is provided for reference only

Image 1

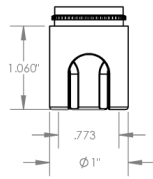
**Skirt Option**



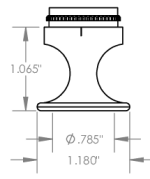
**S**  
Straight  
Cutter  $\phi 3/4"$  ( $\phi 19\text{mm}$ )



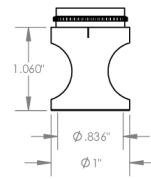
**S2L**  
2-Leg  
Cutter  $\phi 3/4"$  ( $\phi 19\text{mm}$ )



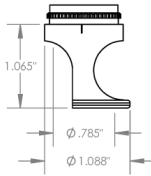
**S3L**  
3-Leg  
Cutter  $\phi 3/4"$  ( $\phi 19\text{mm}$ )



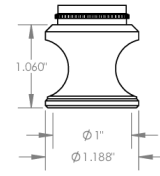
**F**  
Flanged  
Cutter  $\phi 3/4"$  ( $\phi 19\text{mm}$ )



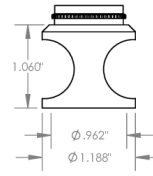
**I**  
Internal Thread  
Cutter  $\phi 5/8"$  ( $\phi 15\text{mm}$ )  
Choose the Foot style from table



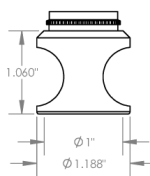
**FCA**  
Flanged Cutaway  
Cutter  $\phi 3/4"$  ( $\phi 19\text{mm}$ )



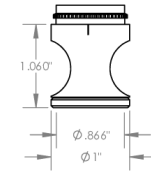
**BE**  
Bell External Thread  
Cutter  $\phi 7/8"$  ( $\phi 22\text{mm}$ )  
Choose the Foot style from table



**BI**  
Bell Internal Thread  
Cutter  $\phi 3/4"$  ( $\phi 19\text{mm}$ )  
Choose the Foot style from table



**B**  
Bell  
Cutter  $\phi 7/8"$  ( $\phi 22\text{mm}$ )



**E**  
External Thread  
Cutter  $\phi 3/4"$  ( $\phi 19\text{mm}$ )  
Choose the Foot style from table

© 2025 Wescon Industries Inc.  
601 Century Plaza Dr. Houston, TX 77073, US  
www.wesconusa.com

Part Number  
**WES598**

Wescon 598 Microstop

All dimensions are in inches  
Information in this drawing is provided for reference only

Image 2