

DATASHEET

PART NUMBER

WES690-1000-SEN-4320-TF

**Wescon 690 Microstop - 7/16-20 - 1" Cutter
Capacity - Slotted External Thread Skirt -
Nylon Foot**

LARGE CAPACITY UNITS FOR ALLOY STEELS

WEBSITE

<https://www.wesconusa.com/products/WES690-1000-SEN-4320-TF>



* The image represents the general look of the series. Actual product may vary based on options selected.

SPECIFICATIONS

| | |
|---------------------------|-------------------------|
| Measurement Type | Imperial |
| Bearing Rating | 3,000 rpm |
| Bearing Type | Bronze Bearing |
| Heavy Duty Thrust Bearing | Yes |
| Incremental Adjustment | 0.0005 in |
| Shaft Travel | 1/2 in |
| Dust Seal | Integrated Dust Seal |
| Cutter Thread | 7/16-20 |
| Shaft | Tri-Flat |
| Shaft Diameter | 3/8 in |
| Cutter Capacity | 1 in |
| Skirt | Slotted External Thread |
| Foot | Nylon |
| Solid Stop | No |
| Material | Steel |
| Country of Origin | USA |

ADDITIONAL IMAGES AND DRAWINGS

WES690 Series Microstop

Part Number
WES690-XX-XX-XX-XX

- Shaft Option
- Shaft Thread
- Foot Style
- Skirt Option*
- Cutter Capacity

| Code | Shaft Option |
|------|--------------|
| -TF | Tri Flat |

| Code | Shaft Thread |
|-------|--------------|
| Blank | 3/8-24 |
| 4320 | 7/16-20 |
| 8 | M8x1 |
| 10 | M10x1 |

| Code | Foot Style |
|------|------------|
| N | Nylon |
| S | Steel |

| Code | Cutter Capacity |
|------|-----------------|
| 875 | 7/8"(22mm) |
| 1000 | 1"(25mm) |
| 1250 | 1-1/4"(32mm) |
| 1375 | 1-3/8"(35mm) |
| 1500 | 1-1/2"(38mm) |
| 2000 | 2"(50.8mm) |

Incremental Adjustment: 0.0005 in
Shaft Travel: 0.500 in

Bearing Rating: 3,000 rpm
Bearing Type: Bronze Bearing
Dust Seal: Integrated Dust Seal
Heavy Duty Thrust Bearing: Yes
Solid Stop: Yes

*For skirt options see next page and website.

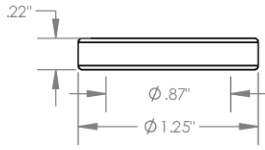
All dimensions are in Inches

| | |
|---|------------------------------|
| WESCON | Part Number WES690 |
| © 2025 Wescon Industries Inc. 401 Century Plaza Dr. Houston, TX 77073, US www.wesconusa.com | Wescon 690 Microstop |

Information in this drawing is provided for reference only

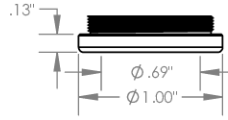
Image 1

**Foot Style
For External Thread**



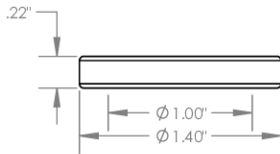
| Part Number | Material |
|-------------|----------|
| 59631-N | Nylon |
| 59631-S | Steel |
| 59361-P | Phenolic |

**Foot Style
For Internal Thread**



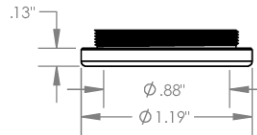
| Part Number | Material |
|-------------|----------|
| 59620-N | Nylon |
| 59620-S | Steel |
| 59620-P | Phenolic |

**Foot Style
For Bell External Thread**



| Part Number | Material |
|-------------|----------|
| 59641-N | Nylon |
| 59641-S | Steel |
| 59641-P | Phenolic |

**Foot Style
For Bell Internal Thread**



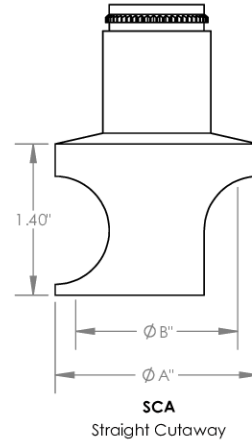
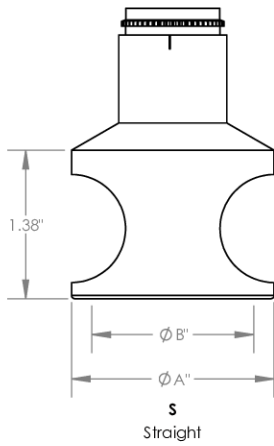
| Part Number | Material |
|-------------|----------|
| 59640-N | Nylon |
| 59640-S | Steel |
| 59640-P | Phenolic |

| | |
|---|---------------|
|  <p>WESCON</p> <p>© 2025 Wescon Industries Inc. 401 Century Plaza Dr. Houston, TX 77073, US www.wesconusa.com</p> | Part Number |
| | WES690 |
| Wescon 690 Microstop | |

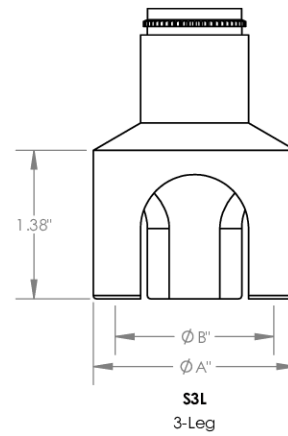
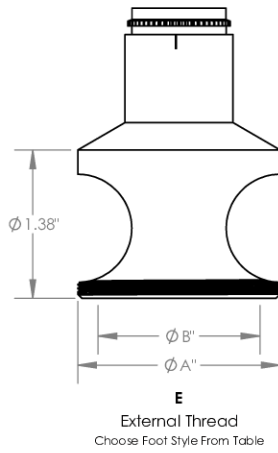
All dimensions are in Inches. Information in this drawing is provided for reference only.

Image 2

Skirt Option



| Code | Cutter Capacity | ϕA | ϕB |
|------|-----------------|----------|----------|
| 875 | 7/8"(22mm) | 1-3/16" | 7/8" |
| 1000 | 1"(25mm) | 1-3/8" | 1-5/8" |
| 1250 | 1-1/4"(32mm) | 1-5/8" | 1-1/2" |
| 1375 | 1-3/8"(35mm) | 1-7/8" | 1-5/8" |
| 1500 | 1-1/2"(38mm) | 2" | 1-1/2" |
| 2000 | 2"(50.8mm) | 2-1/2" | 2-1/4" |



| | | |
|--|----------------------|---------------|
|  WESCON © 2025 Wescon Industries Inc. 401 Century Plaza Dr. Houston, TX 77073, US www.wesconusa.com | Part Number | WES690 |
| | Wescon 690 Microstop | |

All dimensions are in Inches. Information in this drawing is provided for reference only.

Image 3