

## DATASHEET

PART NUMBER

# WES690-1250-TF

**Wescon 690 Microstop - 3/8-24 - 1-1/4" Cutter  
Capacity - Straight Skirt**

LARGE CAPACITY UNITS FOR ALLOY STEELS

WEBSITE

<https://www.wesconusa.com/products/WES690-1250-TF>



## SPECIFICATIONS

Measurement Type	Imperial
Bearing Rating	3,000 rpm
Bearing Type	Bronze Bearing
Heavy Duty Thrust Bearing	Yes
Incremental Adjustment	0.0005 in
Shaft Travel	1/2 in
Dust Seal	Integrated Dust Seal
Cutter Thread	3/8-24
Shaft	Tri-Flat
Shaft Diameter	3/8 in
Cutter Capacity	1-1/4 in
Skirt	Straight
Solid Stop	No
Material	Steel
Country of Origin	USA

ADDITIONAL IMAGES AND DRAWINGS

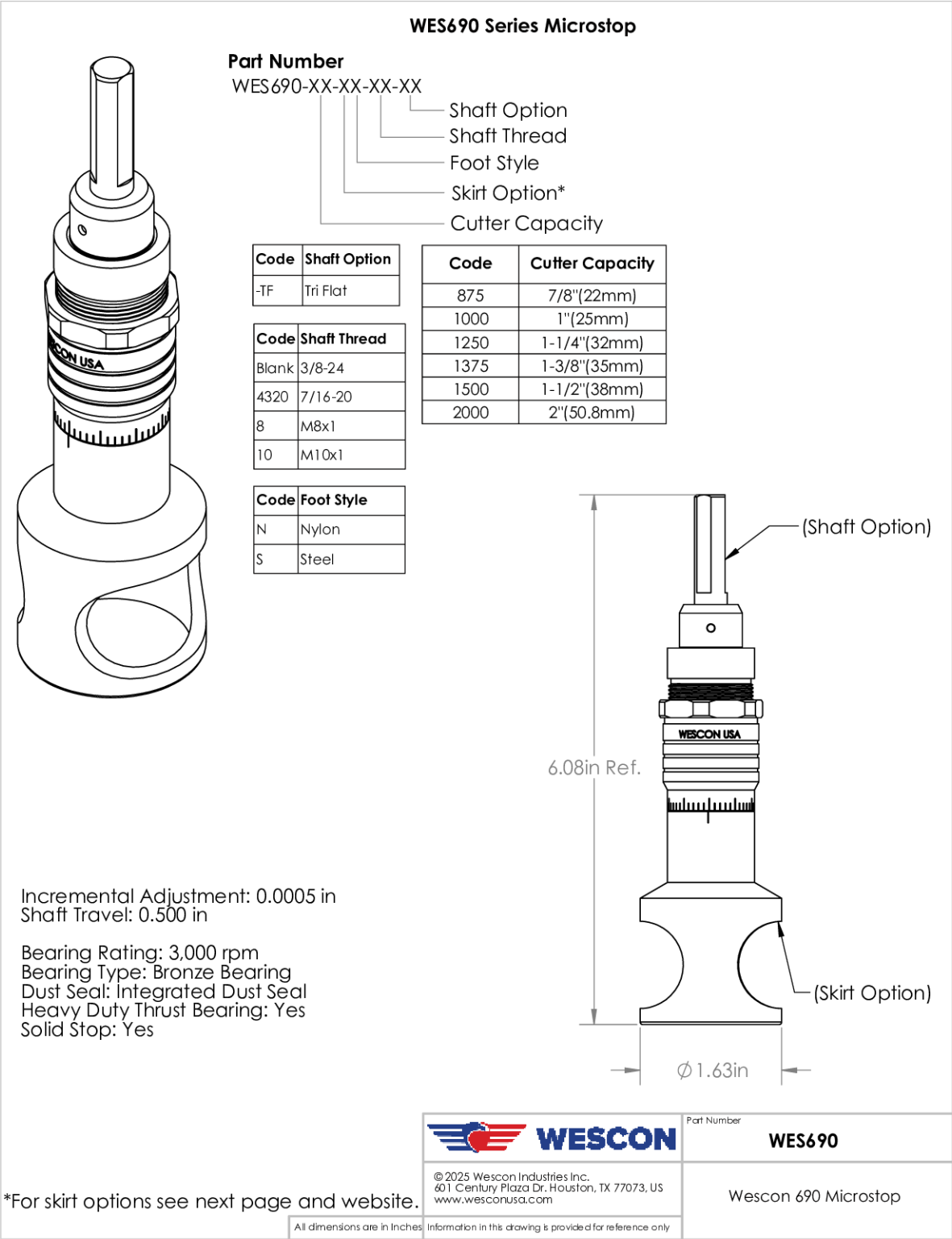
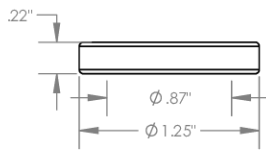


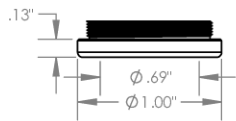
Image 1

**Foot Style  
For External Thread**



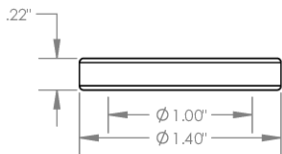
Part Number	Material
59631-N	Nylon
59631-S	Steel
59361-P	Phenolic

**Foot Style  
For Internal Thread**



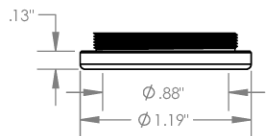
Part Number	Material
59620-N	Nylon
59620-S	Steel
59620-P	Phenolic

**Foot Style  
For Bell External Thread**



Part Number	Material
59641-N	Nylon
59641-S	Steel
59641-P	Phenolic

**Foot Style  
For Bell Internal Thread**



Part Number	Material
59640-N	Nylon
59640-S	Steel
59640-P	Phenolic



**WESCON**

© 2025 Wescon Industries Inc.  
401 Century Plaza Dr. Houston, TX 77073, US  
[www.wesconusa.com](http://www.wesconusa.com)

Part Number

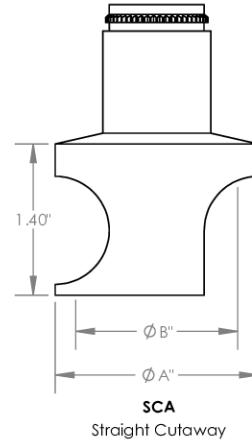
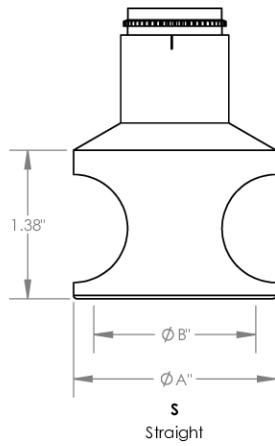
**WES690**

Wescon 690 Microstop

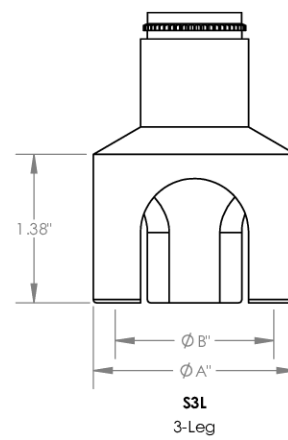
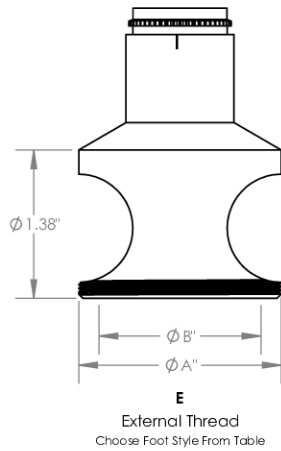
All dimensions are in inches. Information in this drawing is provided for reference only.

Image 2

## Skirt Option



Code	Cutter Capacity	$\phi A$	$\phi B$
875	7/8"(22mm)	1-3/16"	7/8"
1000	1"(25mm)	1-3/8"	1-5/8"
1250	1-1/4"(32mm)	1-5/8"	1-1/2"
1375	1-3/8"(35mm)	1-7/8"	1-5/8"
1500	1-1/2"(38mm)	2"	1-1/2"
2000	2"(50.8mm)	2-1/2"	2-1/4"



**WESCON**

© 2025 Wescon Industries Inc.  
401 Century Plaza Dr. Houston, TX 77073, US  
www.wesconusa.com

Part Number

**WES690**

Wescon 690 Microstop

All dimensions are in inches. Information in this drawing is provided for reference only.

Image 3