

## DATASHEET

PART NUMBER

### WES696-10-1375-SEN-QC

**Wescon 696 Microstop - M10x1 - 35 mm Cutter  
Capacity - Slotted External Thread Skirt -  
Nylon Foot**

LARGE CAPACITY UNITS FOR ALUMINUM &  
COMPOSITES

**WEBSITE**

<https://www.wesconusa.com/products/WES696-10-1375-SEN-QC>



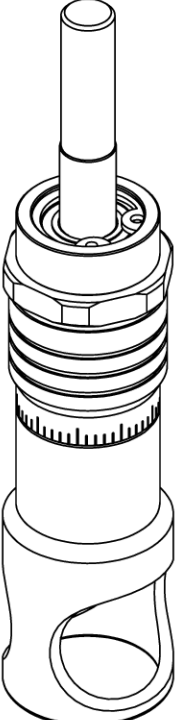
\* The image represents the general look of the series. Actual product may vary based on options selected.

## SPECIFICATIONS

<b>Measurement Type</b>	Metric
<b>Bearing Rating</b>	10,000 rpm
<b>Bearing Type</b>	Dual Ball-Bearings
<b>Heavy Duty Thrust Bearing</b>	Yes
<b>Incremental Adjustment</b>	0.013 mm
<b>Shaft Travel</b>	12.70 mm
<b>Dust Seal</b>	Integrated Dust Seal
<b>Cutter Thread</b>	M10x1
<b>Shaft</b>	Quick Change
<b>Shaft Diameter</b>	9.525 mm
<b>Cutter Capacity</b>	35 mm
<b>Skirt</b>	Slotted External Thread
<b>Foot</b>	Nylon
<b>Solid Stop</b>	Yes
<b>Material</b>	Steel
<b>Country of Origin</b>	USA

## ADDITIONAL IMAGES AND DRAWINGS

### WES696 SERIES MICROSTOP



**Part Number**  
WES696-XX-XX-XX-XX

- Shaft Option
- Shaft Thread
- Foot Style
- Skirt Option\*
- Cutter Capacity

Code	Cutter Capacity
875	7/8"(22mm)
1000	1"(25mm)
1250	1-1/4"(32mm)
1375	1-3/8"(35mm)
1500	1-1/2"(38mm)
2000	2"(50.8mm)

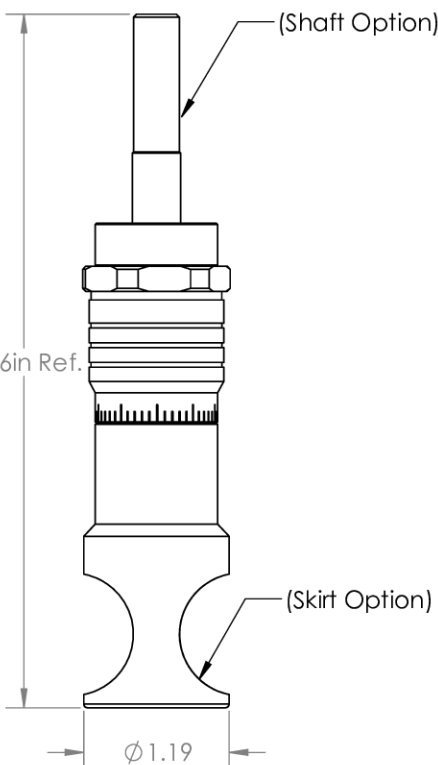
Code	Foot Style
N	Nylon
S	Steel

Code	Shaft Thread
Blank	3/8-24
4320	7/16-20
8	M8x1
10	M10x1

Code	Shaft Option
(Blank)	Round
-QC	Quick Change
-TF	Tri Flat

Incremental Adjustment: 0.0005 in  
 Shaft Travel: 0.500 in  
 Cutter Thread: 1/4-28

Bearing Rating: 10,000 rpm  
 Bearing Type: Dual Ball Bearings  
 Dust Seal: Integrated Dust Seal  
 Heavy Duty Thrust Bearing: Yes  
 Solid Stop: Yes



(Shaft Option)

5.86in Ref.

(Skirt Option)

Ø1.19

**WESCON**

© 2025 Wescon Industries Inc.  
401 Century Plaza Dr. Houston, TX 77073, US  
www.wesconusa.com

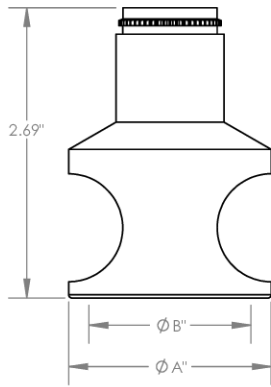
Part Number  
**WES696**

Wescon 696 Microstop

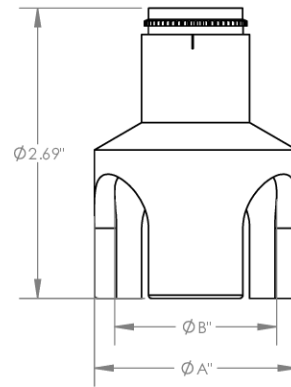
\*For skirt options ,cutter capacity see next page and website.  
 All dimensions are in Inches. Information in this drawing is provided for reference only.

Image 1

### Skirt Option

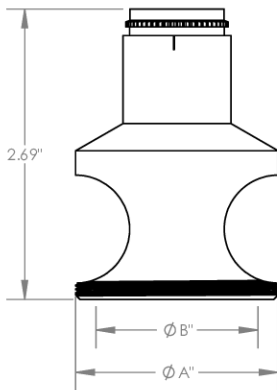


**S**  
Straight

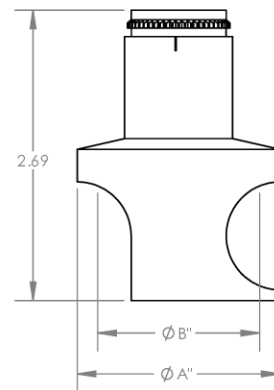


**S3L**  
3-Leg

Code	Cutter Capacity	$\phi A$	$\phi B$
875	7/8"(22mm)	1-3/16"	7/8"
1000	1"(25mm)	1-3/8"	1-5/8"
1250	1-1/4"(32mm)	1-5/8"	1-1/2"
1375	1-3/8"(35mm)	1-7/8"	1-5/8"
1500	1-1/2"(38mm)	2"	1-1/2"
2000	2"(50.8mm)	2-1/2"	2-1/4"



**E**  
External Thread  
Choose Foot Style from table



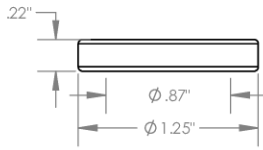
**SCA**  
Straight Cutaway

 <p>© 2025 Wescon Industries Inc. 401 Century Plaza Dr. Houston, TX 77073, US www.wesconusa.com</p>	Part Number
	<b>WES696</b>
Wescon 696 Microstop	

All dimensions are in Inches. Information in this drawing is provided for reference only.

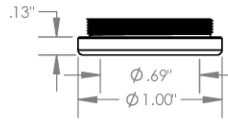
Image 2

**Foot Style  
For External Thread**



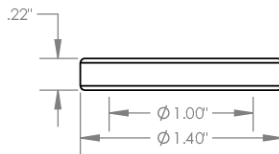
Part Number	Material
59631-N	Nylon
59631-S	Steel
59361-P	Phenolic

**Foot Style  
For Internal Thread**



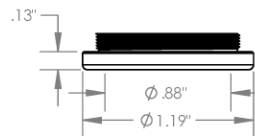
Part Number	Material
59620-N	Nylon
59620-S	Steel
59620-P	Phenolic

**Foot Style  
For Bell External Thread**



Part Number	Material
59641-N	Nylon
59641-S	Steel
59641-P	Phenolic

**Foot Style  
For Bell Internal Thread**



Part Number	Material
59640-N	Nylon
59640-S	Steel
59640-P	Phenolic

 <p>© 2025 Wescon Industries Inc. 401 Century Plaza Dr. Houston, TX 77073, US www.wesconusa.com</p>	Part Number <b>WES696</b>
	Wescon 696 Microstop

All dimensions are in Inches. Information in this drawing is provided for reference only.

Image 3