

DATASHEET

PART NUMBER

WES696-10-1375-SL-TF

Wescon 696 Microstop - M10x1 - 35 mm Cutter Capacity - Slotted Skirt

LARGE CAPACITY UNITS FOR ALUMINUM &
COMPOSITES

WEBSITE

<https://www.wesconusa.com/products/WES696-10-1375-SL-TF>



* The image represents the general look of the series. Actual product may vary based on options selected.

SPECIFICATIONS

Measurement Type	Metric
Bearing Rating	10,000 rpm
Bearing Type	Dual Ball-Bearings
Heavy Duty Thrust Bearing	Yes
Incremental Adjustment	0.013 mm
Shaft Travel	12.70 mm
Dust Seal	Integrated Dust Seal
Cutter Thread	M10x1
Shaft	Tri-Flat
Shaft Diameter	9.525 mm
Cutter Capacity	35 mm
Skirt	Slotted
Solid Stop	Yes
Material	Steel
Country of Origin	USA

ADDITIONAL IMAGES AND DRAWINGS

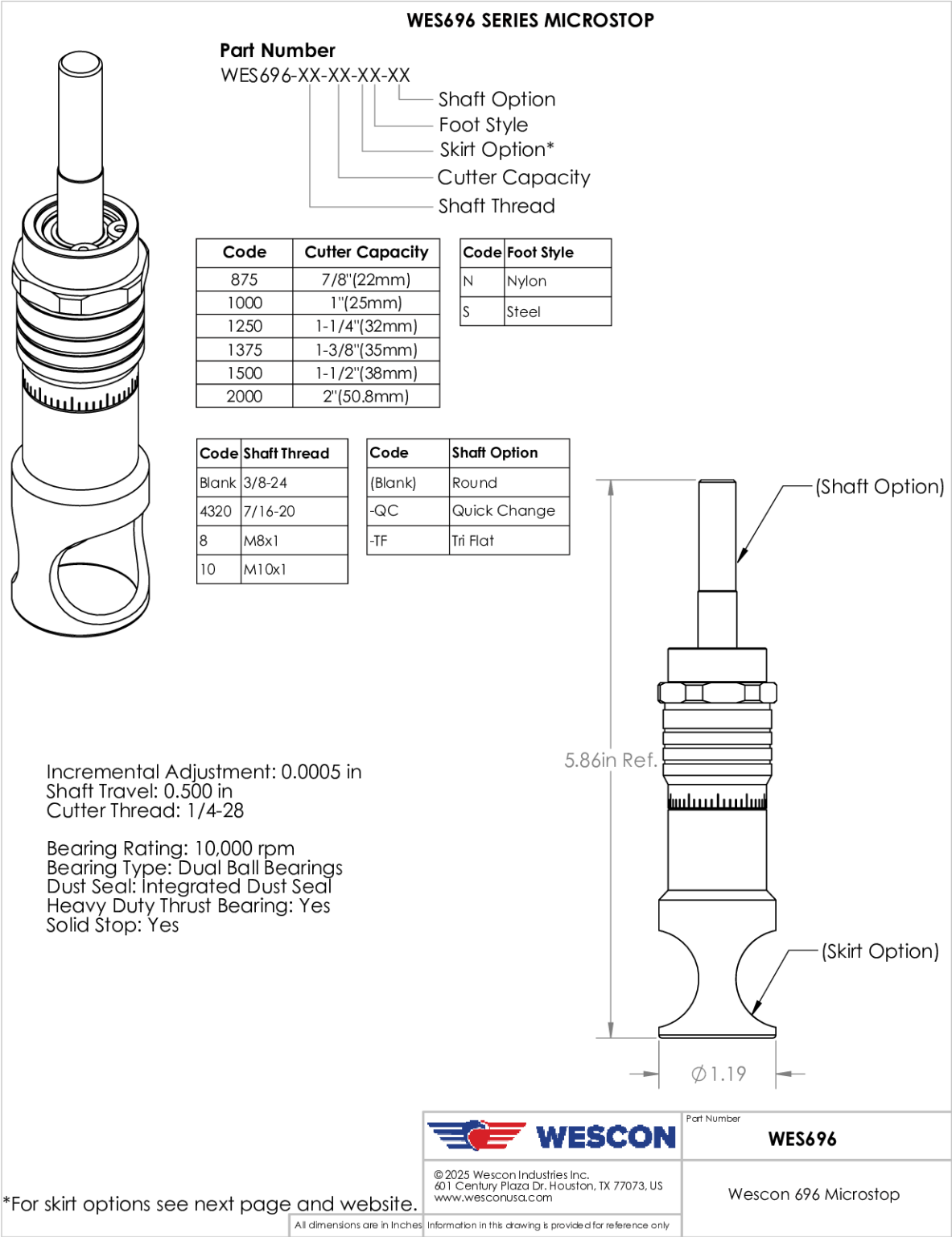
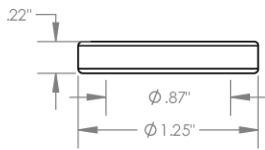


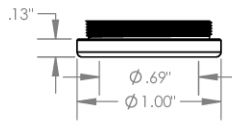
Image 1

**Foot Style
For External Thread**



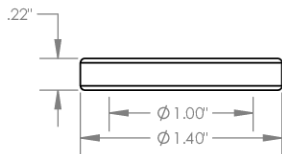
Part Number	Material
59631-N	Nylon
59631-S	Steel
59361-P	Phenolic

**Foot Style
For Internal Thread**



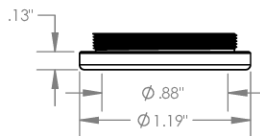
Part Number	Material
59620-N	Nylon
59620-S	Steel
59620-P	Phenolic

**Foot Style
For Bell External Thread**



Part Number	Material
59641-N	Nylon
59641-S	Steel
59641-P	Phenolic

**Foot Style
For Bell Internal Thread**



Part Number	Material
59640-N	Nylon
59640-S	Steel
59640-P	Phenolic

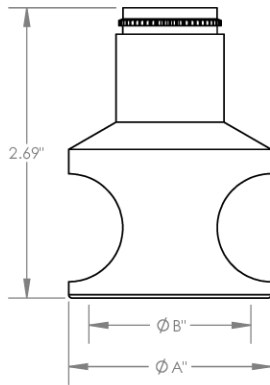


Part Number	WES696
	Wescon 696 Microstop

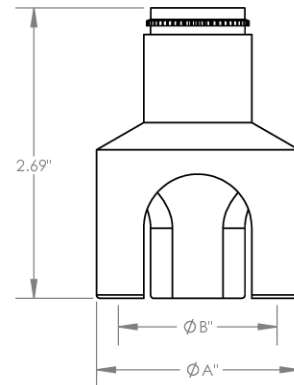
All dimensions are in Inches. Information in this drawing is provided for reference only.

Image 2

Skirt Option

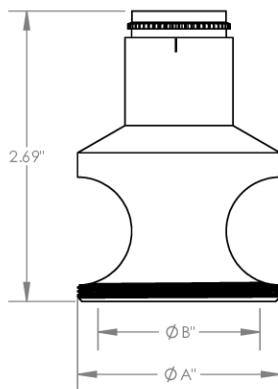


S
Straight

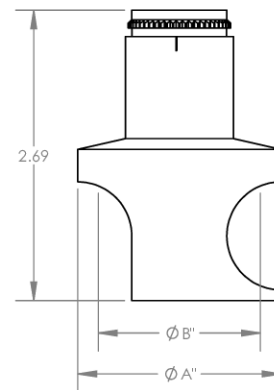


S3L
3-Leg

Code	Cutter Capacity	ϕA	ϕB
875	7/8"(22mm)	1-3/16"	7/8"
1000	1"(25mm)	1-3/8"	1-5/8"
1250	1-1/4"(32mm)	1-5/8"	1-1/2"
1375	1-3/8"(35mm)	1-7/8"	1-5/8"
1500	1-1/2"(38mm)	2"	1-1/2"
2000	2"(50.8mm)	2-1/2"	2-1/4"



E
External Thread
Choose Foot Style from table



SCA
Straight Cutaway



WESCON

© 2025 Wescon Industries Inc.
401 Century Plaza Dr. Houston, TX 77073, US
www.wesconusa.com

Part Number

WES696

Wescon 696 Microstop

All dimensions are in Inches. Information in this drawing is provided for reference only.

Image 3