

DATASHEET

PART NUMBER

WES696-10-2000-SEN-TF

Wescon 696 Microstop - M10x1 - 50.8 mm
Cutter Capacity - Slotted External Thread Skirt
- Nylon Foot

LARGE CAPACITY UNITS FOR ALUMINUM &
COMPOSITES

WEBSITE

<https://www.wesconusa.com/products/WES696-10-2000-SEN-TF>



* The image represents the general look of the series. Actual product may vary based on options selected.

SPECIFICATIONS

| | |
|---------------------------|-------------------------|
| Measurement Type | Metric |
| Bearing Rating | 10,000 rpm |
| Bearing Type | Dual Ball-Bearings |
| Heavy Duty Thrust Bearing | Yes |
| Incremental Adjustment | 0.013 mm |
| Shaft Travel | 12.70 mm |
| Dust Seal | Integrated Dust Seal |
| Cutter Thread | M10x1 |
| Shaft | Tri-Flat |
| Shaft Diameter | 9.525 mm |
| Cutter Capacity | 50.8 mm |
| Skirt | Slotted External Thread |
| Foot | Nylon |
| Solid Stop | Yes |
| Material | Steel |
| Country of Origin | USA |

ADDITIONAL IMAGES AND DRAWINGS

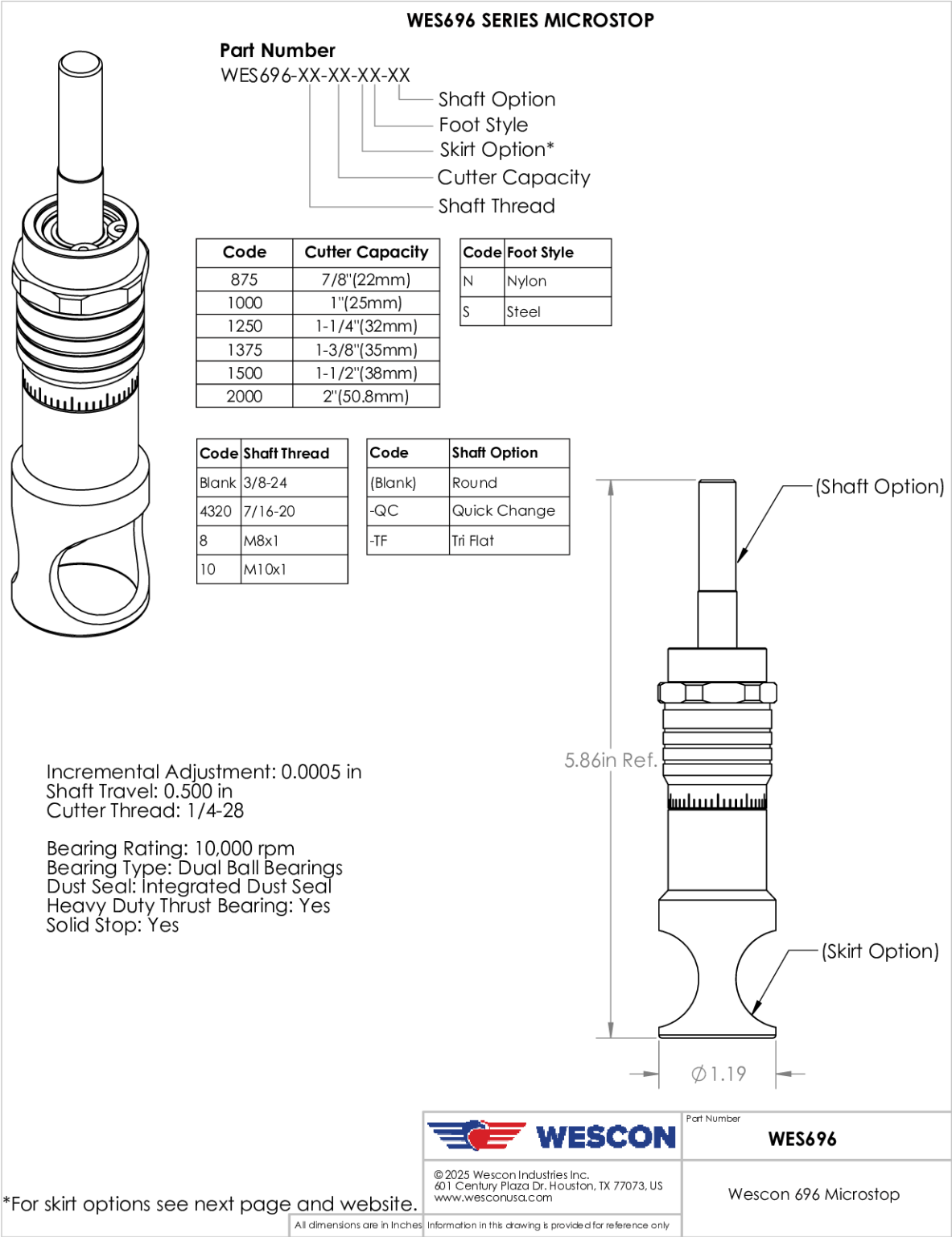
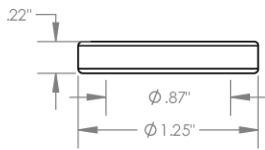


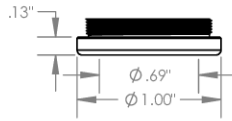
Image 1

**Foot Style
For External Thread**



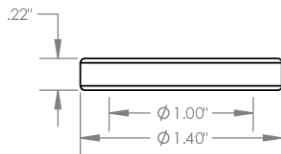
| Part Number | Material |
|-------------|----------|
| 59631-N | Nylon |
| 59631-S | Steel |
| 59361-P | Phenolic |

**Foot Style
For Internal Thread**



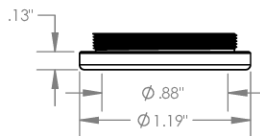
| Part Number | Material |
|-------------|----------|
| 59620-N | Nylon |
| 59620-S | Steel |
| 59620-P | Phenolic |

**Foot Style
For Bell External Thread**



| Part Number | Material |
|-------------|----------|
| 59641-N | Nylon |
| 59641-S | Steel |
| 59641-P | Phenolic |

**Foot Style
For Bell Internal Thread**



| Part Number | Material |
|-------------|----------|
| 59640-N | Nylon |
| 59640-S | Steel |
| 59640-P | Phenolic |

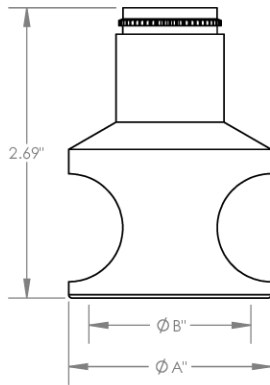


| | |
|----------------------|---------------|
| Part Number | WES696 |
| Wescon 696 Microstop | |

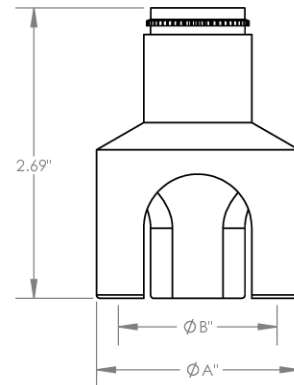
All dimensions are in Inches. Information in this drawing is provided for reference only.

Image 2

Skirt Option

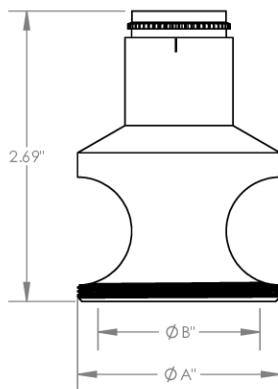


S
Straight

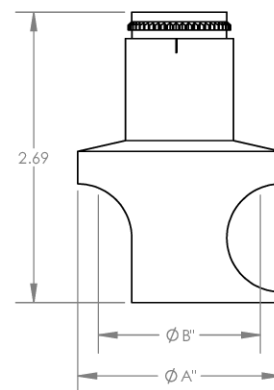


S3L
3-Leg

| Code | Cutter Capacity | ϕA | ϕB |
|------|-----------------|----------|----------|
| 875 | 7/8"(22mm) | 1-3/16" | 7/8" |
| 1000 | 1"(25mm) | 1-3/8" | 1-5/8" |
| 1250 | 1-1/4"(32mm) | 1-5/8" | 1-1/2" |
| 1375 | 1-3/8"(35mm) | 1-7/8" | 1-5/8" |
| 1500 | 1-1/2"(38mm) | 2" | 1-1/2" |
| 2000 | 2"(50.8mm) | 2-1/2" | 2-1/4" |



E
External Thread
Choose Foot Style from table



SCA
Straight Cutaway



WESCON

© 2025 Wescon Industries Inc.
401 Century Plaza Dr. Houston, TX 77073, US
www.wesconusa.com

Part Number

WES696

Wescon 696 Microstop

All dimensions are in Inches. Information in this drawing is provided for reference only.

Image 3