

DATASHEET

PART NUMBER

WES696-8-1500-EN-TF

**Wescon 696 Microstop - M8x1 - 38 mm Cutter
Capacity - External Thread Skirt - Nylon Foot**

LARGE CAPACITY UNITS FOR ALUMINUM &
COMPOSITES

WEBSITE

<https://www.wesconusa.com/products/WES696-8-1500-EN-TF>



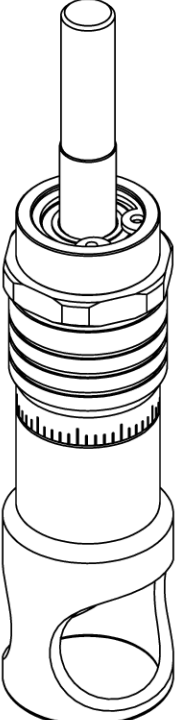
* The image represents the general look of the series. Actual product may vary based on options selected.

SPECIFICATIONS

Measurement Type	Metric
Bearing Rating	10,000 rpm
Bearing Type	Dual Ball-Bearings
Heavy Duty Thrust Bearing	Yes
Incremental Adjustment	0.013 mm
Shaft Travel	12.70 mm
Dust Seal	Integrated Dust Seal
Cutter Thread	M8x1
Shaft	Tri-Flat
Shaft Diameter	9.525 mm
Cutter Capacity	38 mm
Skirt	External Thread
Foot	Nylon
Solid Stop	Yes
Material	Steel
Country of Origin	USA

ADDITIONAL IMAGES AND DRAWINGS

WES696 SERIES MICROSTOP



Part Number
WES696-XX-XX-XX-XX

- Shaft Option
- Foot Style
- Skirt Option*
- Cutter Capacity
- Shaft Thread

Code	Cutter Capacity
875	7/8"(22mm)
1000	1"(25mm)
1250	1-1/4"(32mm)
1375	1-3/8"(35mm)
1500	1-1/2"(38mm)
2000	2"(50.8mm)

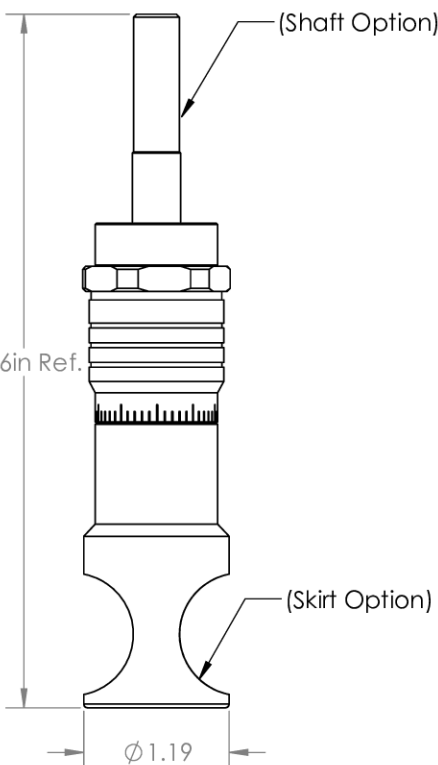
Code	Foot Style
N	Nylon
S	Steel

Code	Shaft Thread
Blank	3/8-24
4320	7/16-20
8	M8x1
10	M10x1

Code	Shaft Option
(Blank)	Round
-QC	Quick Change
-TF	Tri Flat

Incremental Adjustment: 0.0005 in
 Shaft Travel: 0.500 in
 Cutter Thread: 1/4-28

Bearing Rating: 10,000 rpm
 Bearing Type: Dual Ball Bearings
 Dust Seal: Integrated Dust Seal
 Heavy Duty Thrust Bearing: Yes
 Solid Stop: Yes




(Shaft Option)

5.86in Ref.

(Skirt Option)

Ø1.19



© 2025 Wescon Industries Inc.
 401 Century Plaza Dr. Houston, TX 77073, US
 www.wesconusa.com

Part Number

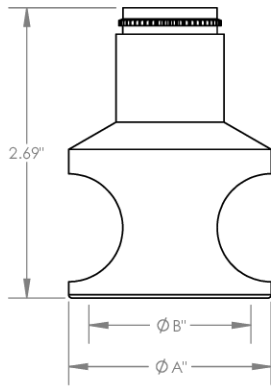
WES696

Wescon 696 Microstop

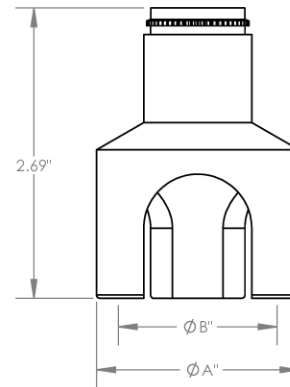
*For skirt options see next page and website. All dimensions are in Inches. Information in this drawing is provided for reference only.

Image 1

Skirt Option

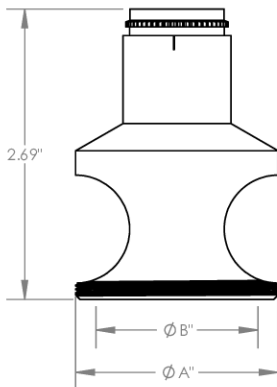


S
Straight

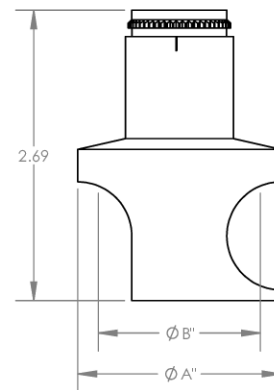


S3L
3-Leg

Code	Cutter Capacity	ϕA	ϕB
875	7/8"(22mm)	1-3/16"	7/8"
1000	1"(25mm)	1-3/8"	1-5/8"
1250	1-1/4"(32mm)	1-5/8"	1-1/2"
1375	1-3/8"(35mm)	1-7/8"	1-5/8"
1500	1-1/2"(38mm)	2"	1-1/2"
2000	2"(50.8mm)	2-1/2"	2-1/4"



E
External Thread
Choose Foot Style from table



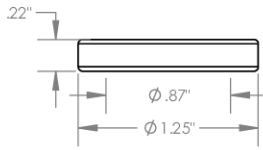
SCA
Straight Cutaway

 <p>© 2025 Wescon Industries Inc. 401 Century Plaza Dr. Houston, TX 77073, US www.wesconusa.com</p>	Part Number
	WES696
Wescon 696 Microstop	

All dimensions are in Inches. Information in this drawing is provided for reference only.

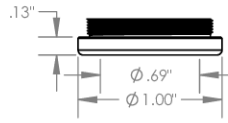
Image 2

**Foot Style
For External Thread**



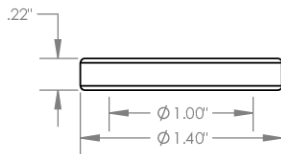
Part Number	Material
59631-N	Nylon
59631-S	Steel
59361-P	Phenolic

**Foot Style
For Internal Thread**



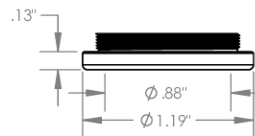
Part Number	Material
59620-N	Nylon
59620-S	Steel
59620-P	Phenolic

**Foot Style
For Bell External Thread**



Part Number	Material
59641-N	Nylon
59641-S	Steel
59641-P	Phenolic

**Foot Style
For Bell Internal Thread**



Part Number	Material
59640-N	Nylon
59640-S	Steel
59640-P	Phenolic

 <p>© 2025 Wescon Industries Inc. 401 Century Plaza Dr. Houston, TX 77073, US www.wesconusa.com</p>	Part Number WES696
	Wescon 696 Microstop

All dimensions are in Inches. Information in this drawing is provided for reference only.

Image 3